

LOF

2018

2018 12 31

2019 3 29

§ 1

2019 3 26

§

	LOF	
	163003	
	2016 6 25	
	378,420,617.32	
	2016 7 22	
	(LOF) A	(LOF) C
	-	
	163008	163003
	349,614,817.86	28,805,799.46

1

2011 6 24

5

2016 6 24

A

B

LOF

2

2017 1 9

LOF

C

A

2017 1 4

LOF

3

LOF C



§ 3

3.1.1	2018		2017		2016 6 25 (-2016 12 31)	
	(LOF) A	(LOF) C	(LOF) A	(LOF) C	(LOF) A	(LOF) C
	10, 502, 133. 66	684, 791. 67	56, 951, 889. 89	4, 201, 119. 29	-	11, 921, 157. 88
	16, 914, 118. 63	1, 113, 004. 90	50, 371, 427. 54	2, 138, 969. 24	-	5, 386, 861. 93
	0. 0358	0. 0323	0. 0227	0. 0186	-	0. 0135
	5. 74%	5. 35%	2. 43%	1. 79%	-	1. 03%
3.1.2	2018		2017		2016	
	0. 0242	0. 0082	0. 0200	0. 0134	-	0. 3928
	222, 345, 028. 09	18, 052, 289. 85	443, 743, 526. 33	30, 690, 835. 33	-	294, 044, 430. 40
	0. 6360	0. 6267	0. 6318	0. 6253	-	1. 0103

1

2

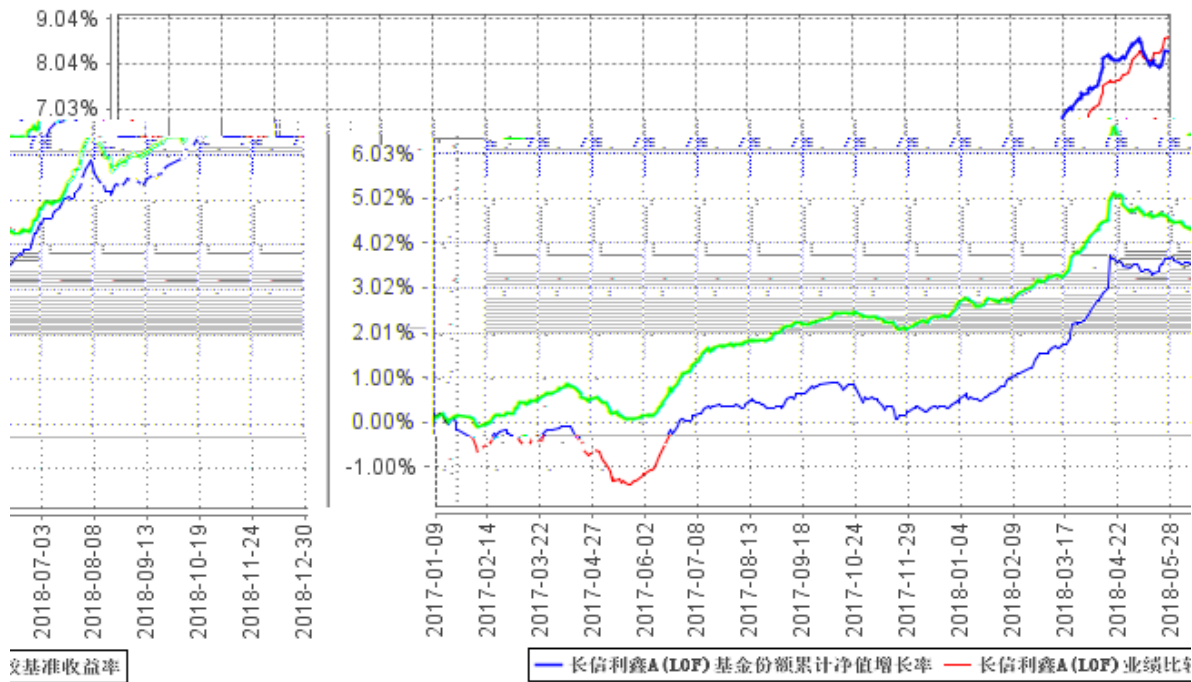
(LOF) A

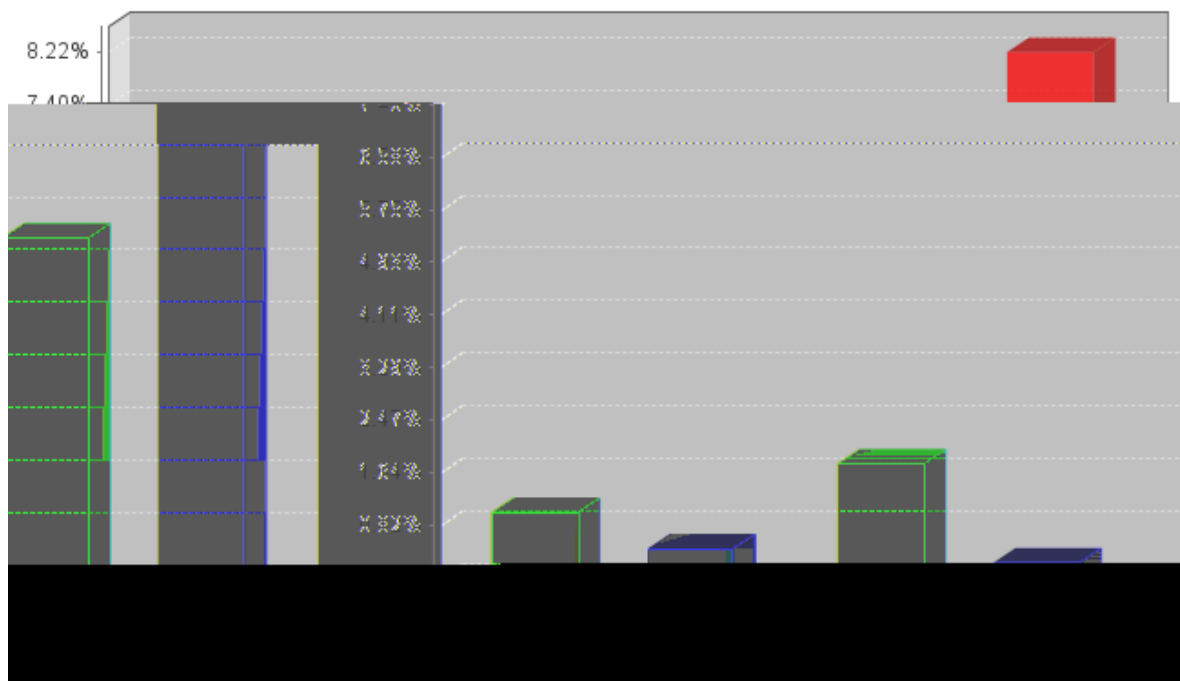
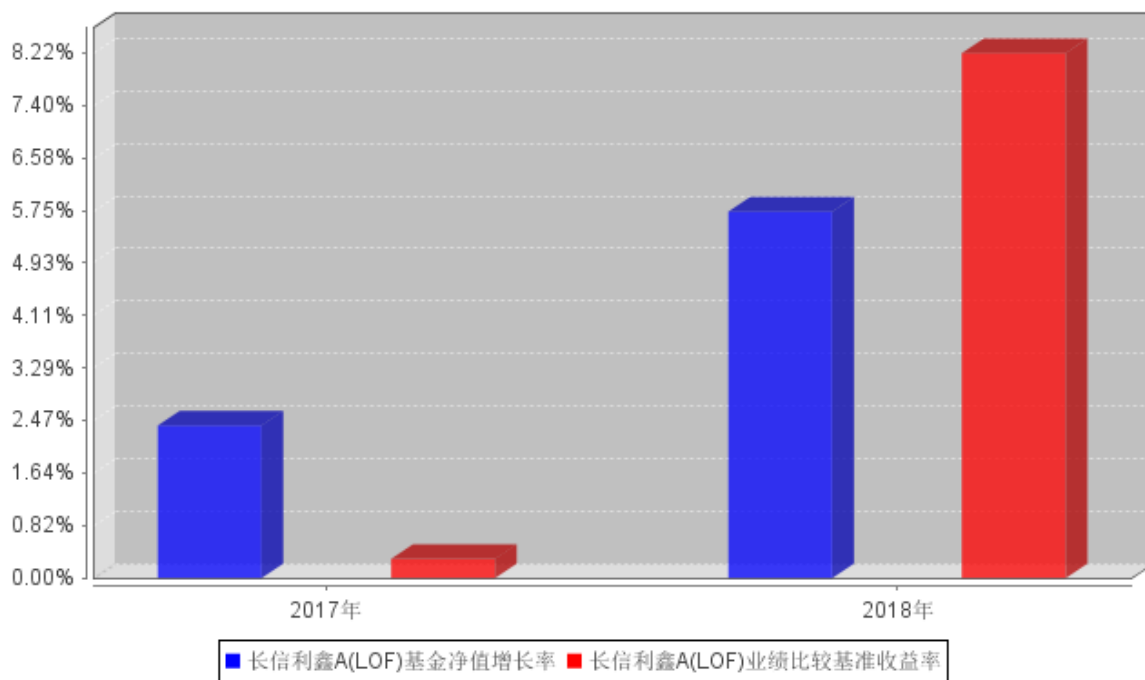
	1. 73%	0. 08%	2. 67%	0. 05%	-0. 94%	0. 03%

	3.57%	0.08%	4.19%	0.06%	-0.62%	0.02%
	5.74%	0.07%	8.22%	0.07%	-2.48%	0.00%
	8.30%	0.06%	8.66%	0.07%	-0.36%	-0.01%

(LOF) C

	1.64%	0.08%	2.67%	0.05%	-1.03%	0.03%
	3.40%	0.08%	4.19%	0.06%	-0.79%	0.02%
	5.35%	0.07%	8.22%	0.07%	-2.87%	0.00%
	8.34%	0.06%	8.99%	0.08%	-0.65%	-0.02%





1	(LOF)A	2017	1	9	2018	12	31
2017	(LOF)A						
2	(LOF)C	2016	6	25	2018	12	31
2016	(LOF)						

(LOF) A					
	10				
2018	0.320	11,185,475.62	654.61	11,186,130.23	
2017	4.000	8,964,360,514.46	528,520.94	8,964,889,035.40	
2016	-	-	-	-	
	4.320	8,975,545,990.08	529,175.55	8,976,075,165.63	

(LOF) C					
	10				
2018	0.320	841,686.89	151,885.50	993,572.39	
2017	4.000	67,954,008.94	5,730,430.82	73,684,439.76	
2016	-	-	-	-	
	4.320	68,795,695.83	5,882,316.32	74,678,012.15	

4.7

§

2003 63

1.65

44.55%

31.21%

15.15%

4.55%

4.54%

2018 12 31

64

100

(LOF)

(LOF)

LOF

LOF

500

FOF

	(LOF)	2011 6 24	-	24	EMBA 2004 9 (LOF)

--	--	--	--	--	--

1

/

2

1

2

1

2

5 1

3

4

5

5%

2018

7

MLF

“ +

”

2018	12	31	A	0.6360	1.0680
C		0.6267		1.0587	A
5.74%			8.22%	C	5.35%
		8.22%			

2019

2008 9 12 [2008]38

“ ”

1/2

(LOF) A

				10				
1	2018 11 21	2018 11 22	2018 11 21	0.320	11,185,475.62	654.61	11,186,130.23	-
	-	-		0.320	11,185,475.62	654.61	11,186,130.23	-

(LOF) C

				10				
1	2018 11 21	2018 11 22	2018 11 21	0.320	741,604.53	429,262.23	993,572.39	-
	-	-		0.320	741,604.53	429,262.23	993,572.39	-

LOF

1

2

12

10%

3

4

5

15

6

7

§

2011 6 24

“

”

LOF

§

2018

() (19) P00114

S

LOF

2018 12 31

	2018 12 31	2017 12 31
	1,047,813.32	5,038,644.86
	228,115.46	81,948.99
	7,759.75	56,986.45
	316,586,363.35	379,836,751.16
	-	-
	-	-
	316,586,363.35	379,836,751.16
	-	-
	-	-
	-	-
	-	93,886,654.83
	-	-
	7,499,208.64	9,704,370.20
	-	-
	60,770.76	5,300.00
	-	-
	-	-
	325,430,031.28	488,610,656.49
	2018 12 31	2017 12 31
	-	-
	-	-
	-	-
	83,999,299.50	9,023,866.46
	6,828.68	4,000,000.00
	10,265.07	33,063.62
	143,364.51	334,974.48
	40,961.31	95,706.97
	5,622.05	9,430.22
	9,818.54	18,929.46
	436,428.16	372,959.00
	148,778.26	6,009.88

	-	-
	-	-
	231,347.26	281,354.74
	85,032,713.34	14,176,294.83
	231,525,441.40	459,724,361.96
	8,871,876.54	14,709,999.70
	240,397,317.94	474,434,361.66
	325,430,031.28	488,610,656.49

	5,490,719.90	20,611,712.23
1	2,287,283.62	12,742,294.71
2	653,509.61	3,640,655.62
3	76,808.55	349,377.00
4	16,427.36	116,745.54
5	2,081,678.50	3,389,814.36
	2,081,678.50	3,389,814.36
6	57,812.26	-
7	317,200.00	372,825.00
-”	18,027,123.53	52,510,396.78
	-	-
-	18,027,123.53	52,510,396.78

LOF

2018 1 1 2018 12 31

	2018 1 1 2018 12 31		
	459,724,361.96	14,709,999.70	474,434,361.66
	-	18,027,123.53	18,027,123.53
-	-228,198,920.56	-11,685,544.07	-239,884,464.63
1.	4,875,624.49	220,204.68	5,095,829.17
2.	-233,074,545.05	-11,905,748.75	-244,980,293.80
	-	-12,179,702.62	-12,179,702.62
“ -			
	231,525,441.40	8,871,876.54	240,397,317.94

	2017 1 1 2017 12 31		
	178,081,407.30	115,963,023.10	294,044,430.40
	-	52,510,396.78	52,510,396.78
-	281,642,954.66	8,884,810,054.98	9,166,453,009.64
1.	26,832,321,959.29	13,318,505,218.49	40,150,827,177.78
2.	-26,550,679,004.63	-4,433,695,163.51	-30,984,374,168.14
" -	-	-9,038,573,475.16	-9,038,573,475.16
	459,724,361.96	14,709,999.70	474,434,361.66

7.1 7.4



(LOF) (“ ”)

)

(“
[2011] 603)

(“ ”) 2011 6

24

5

2016 6 24

(LOF) ” “

2016 6 25 (LOF) ”

2016 6 25 “ (LOF) ”

2017 1 4

(LOF) 2017 1 9 A (

“ (LOF)A”) (LOF)A

C (“ (LOF)C”)

(LOF)C 0.35%

(LOF)

()

(

)

80%

20%

5%

(“ ”)

ø Ú ñ ù@ øPÿ Lp« ÅN-Ø`

[2005]103

[2008]1

2008

9 18

[2012]85

[2014]48

[2015]101

[2016]36

[2016]140

[2017]56

[2017]90

()

2018 1 1

3%

1 (

1) 1 1 (1)
 50% 1
 20% 20%
 A 0.10% ()

(“ ”)	
”) (“	
(“ ”)	
(“ ”)	
”) () (“	
”) () (“	
	()
”) (“	
	()

1

2

([2018]1905)

15.15%

2018 12 21

()

()

	2018 1 1			2018 12 31			2017 1 1			2017 12 31		
	189,998,322.39			70.94%			504,178,975.02			96.09%		

	2018 1 1			2018 12 31			2017 1 1			2017 12 31		
	500,200,000.00			63.80%			25,185,300,000.00			97.87%		

	2018 1 1			2018 12 31			2017 1 1			2017 12 31		
				2,287,283.62						12,742,294.71		
				40,882.53						373,139.79		

0.70%

=

	2018 1 1 31	2018 12 31	2017 1 1 31	2017 12 31
		653,509.61		3,640,655.62

0.20%

=

	2018 1 1 31			2018 12 31		
	(LOF) A	(LOF) C		(LOF) A	(LOF) C	
	-	22,648.10		22,648.10		
	-	3,670.40		3,670.40		
	-	10.95		10.95		
	-	26,329.45		26,329.45		
	2017 1 1 31			2017 12 31		
	(LOF) A	(LOF) C		(LOF) A	(LOF) C	
	-	36,599.84		36,599.84		
	-	44,386.43		44,386.43		
	-	35.57		35.57		
	-	81,021.84		81,021.84		

(LOF) A

, (LOF) C

(LOF) C

=

(LOF) C

2018 1 1 2018 12 31						
	-	-	-	-	20,000,000.00	5,260.27
2017 1 1 2017 12 31						
	-	-	-	-	-	-

	2018 1 1	2018 12 31	2017 1 1	2017 12 31
	1,047,813.32	73,047.58	5,038,644.86	1,470,035.17

2018 12 31 228,115.46 (2017 12 31 81,948.99)

2018 12 31

2018 12 31

66,999,299.50

1380189	13	2019 1 3	40.76	300,000	12,228,000.00
1380382	13	2019 1 3	41.77	25,000	1,044,250.00
180201	18 01	2019 1 2	100.11	200,000	20,022,000.00
180211	18 11	2019 1 2	101.33	120,000	12,159,600.00
101800638	18 MFN001B	2019 1 3	104.66	50,000	5,233,000.00
101772011	17 MFN001	2019 1 3	101.59	100,000	10,159,000.00
101800783	18 MFN002B	2019 1 3	103.05	71,000	7,316,550.00
				866,000	68,162,400.00

2018 12 31

17,000,000.00 7,000,000.00 2019 1 3 5,000,000.00

2019 1 4 , 5,000,000.00 2019 1 8

/

§

			%
1		-	-
		-	-
2		-	-
3		316,586,363.35	97.28
		316,586,363.35	97.28
		-	-
4		-	-
5		-	-
6		-	-
		-	-
7		1,275,928.78	0.39
8		7,567,739.15	2.33
9		325,430,031.28	100.00

1		-	-
2		-	-
3		96,779,300.00	40.26
		96,779,300.00	40.26
4		137,846,750.00	57.34
5		-	-
6		61,774,000.00	25.70
7		20,186,313.35	8.40
8		-	-
9		-	-
10		316,586,363.35	131.69

1	180205	18 05	200,000	21,792,000.00	9.06
2	180406	18 06	200,000	21,386,000.00	8.90
3	101800329	18 MTN001	200,000	20,614,000.00	8.57
4	180211	18 11	200,000	20,266,000.00	8.43
5	180201	18 01	200,000	20,022,000.00	8.33

1		7,759.75
2		-
3		-
4		7,499,208.64
5		60,770.76
6		-
7		-
8		-
9		7,567,739.15

1	110031		2,439,094.40	1.01
2	128024		2,119,600.00	0.88
3	113011		1,051,200.00	0.44
4	113009		506,450.00	0.21

§ 9

	()					
(LOF) A	75	4,661,530.90	349,526,481.09	99.97%	88,336.77	0.03%
(LOF) C	3,261	8,833.43	333,895.68	1.16%	28,471,903.78	98.84%
	3,336	113,435.44	349,860,376.77	92.45%	28,560,240.55	7.55%

(LOF) C

--	--	--	--

1

	(LOF) A	0
	(LOF) C	0
		0
	(LOF) A	0
	(LOF) C	0
		0

§ 10

	(LOF) A	(LOF) C
2016 6 25	-	382,306,241.59
	702,316,046.34	49,085,073.98
	99,572.17	7,869,462.40
:	352,800,800.65	28,148,736.92
"_"	-	-
	349,614,817.86	28,805,799.46

§ 11

11.2.1

2018 8 28

11.2.2

40,000.00

2

	1	-	-	-	-	-
	1	-	-	-	-	-

	189,998,322.39	70.94%	500,200,000.00	63.80%	-	-
	77,821,368.60	29.06%	283,768,000.00	36.20%	-	-

§

		20%					
1	2018 1 1 2018 12 31	1	181,136,336.19	0.00	20,000,000.00	161,136,336.19	42.58%
	2018 1 2018 14	1	197,121,032.92	0.00	197,121,032.92	0.00	0.00%
	2018 9 27 2018 12 31	9	94,190,315.18	0.00	0.00	94,190,315.18	24.89%
-	-		-	-	-	-	-
1							
2							
3							

2019 3 29