

§

2019 3 11 2019 4 4

2019 4 8

20

2019 4 10 2019 5 13

2019 5 14

2019 7 16

2019 4 1 2019 6 30

§ 2

	519943
	2019 5 14
	10,201,667.31

	A	C
	A	C
	519943	519942
	4, 128, 623. 59	2, 320, 352. 04

2019 5 13

§

	2019 5 14	2019 6 30
	A	C
1.	15, 378. 61	9, 244. 21
2.	28, 761. 68	24, 393. 00
3.	0. 0071	0. 0089
4.	4, 560, 879. 46	6, 821, 520. 94
5.	1. 1213	1. 1120

1 2019 5 14

2

3

3.1

	2019 4 1	2019 5 13
	A	C
1.	10, 205. 87	17, 268. 91
2.	22, 229. 83	27, 275. 50

3.	0.0051	0.0017
4.	4,600,270.29	2,565,237.37
5.	1.1142	1.1055

1

2

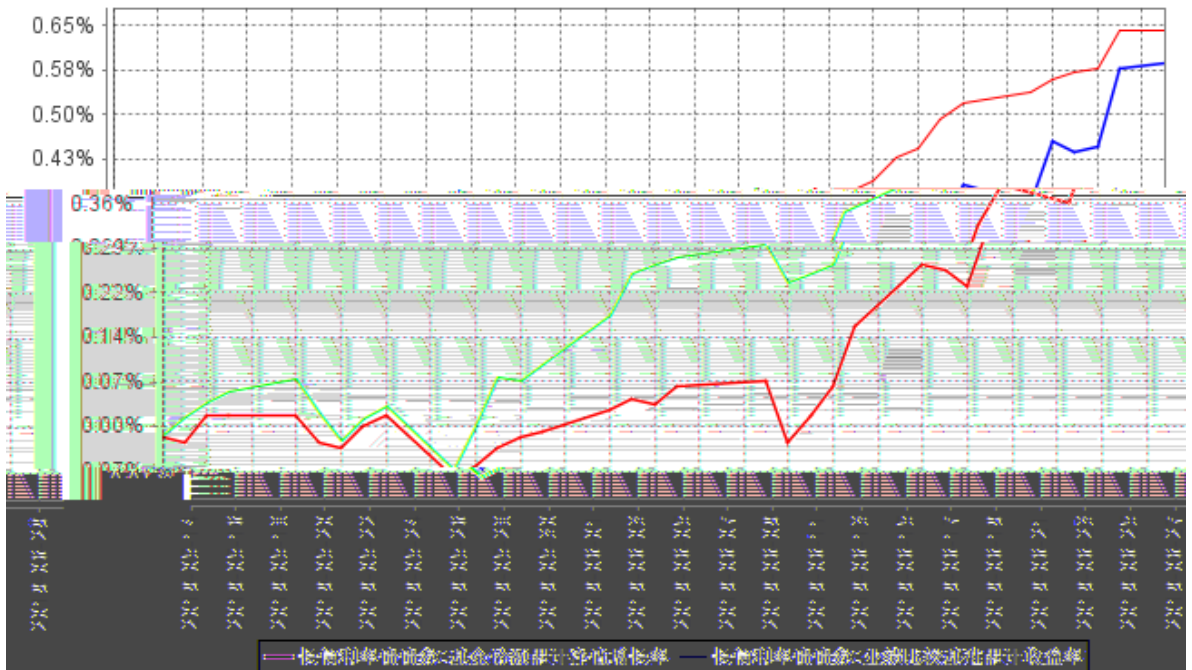
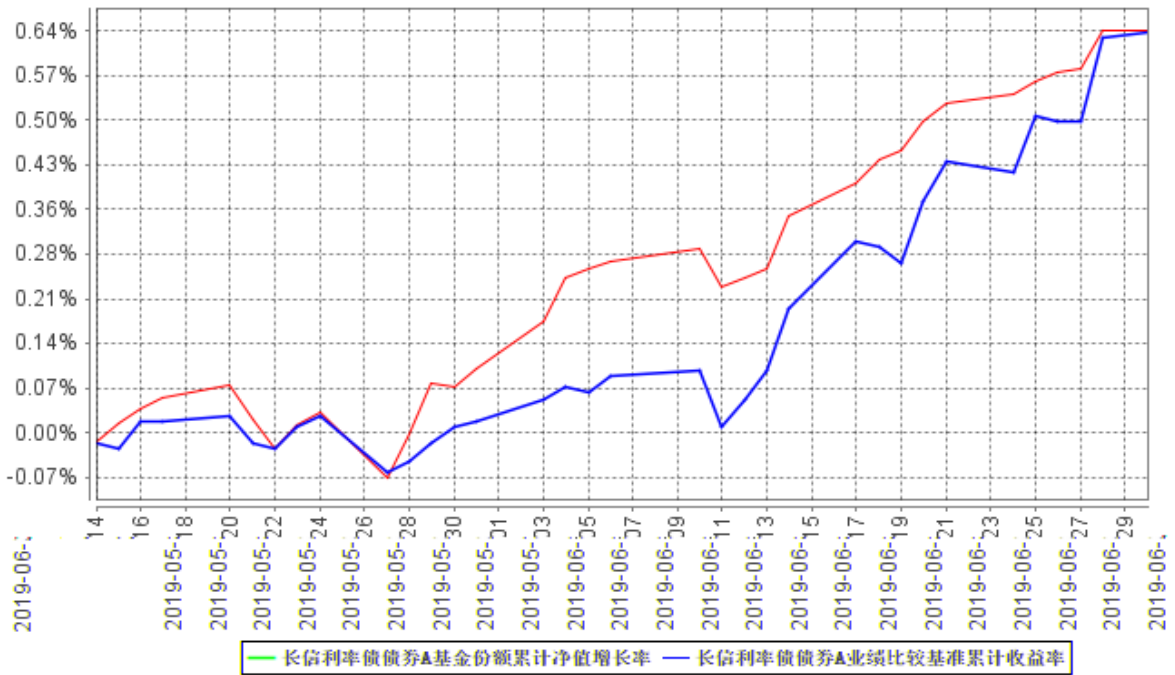
3.2

A

2019 5 14 -2019 6 30	0.64%	0.05%	0.64%	0.04%	0.00%	0.01%

C

2019 5 14 -2019 6 30	0.59%	0.05%	0.64%	0.04%	-0.05%	0.01%



1 2019 5 14

2019 5 14 2019 6 30

2 6

5%

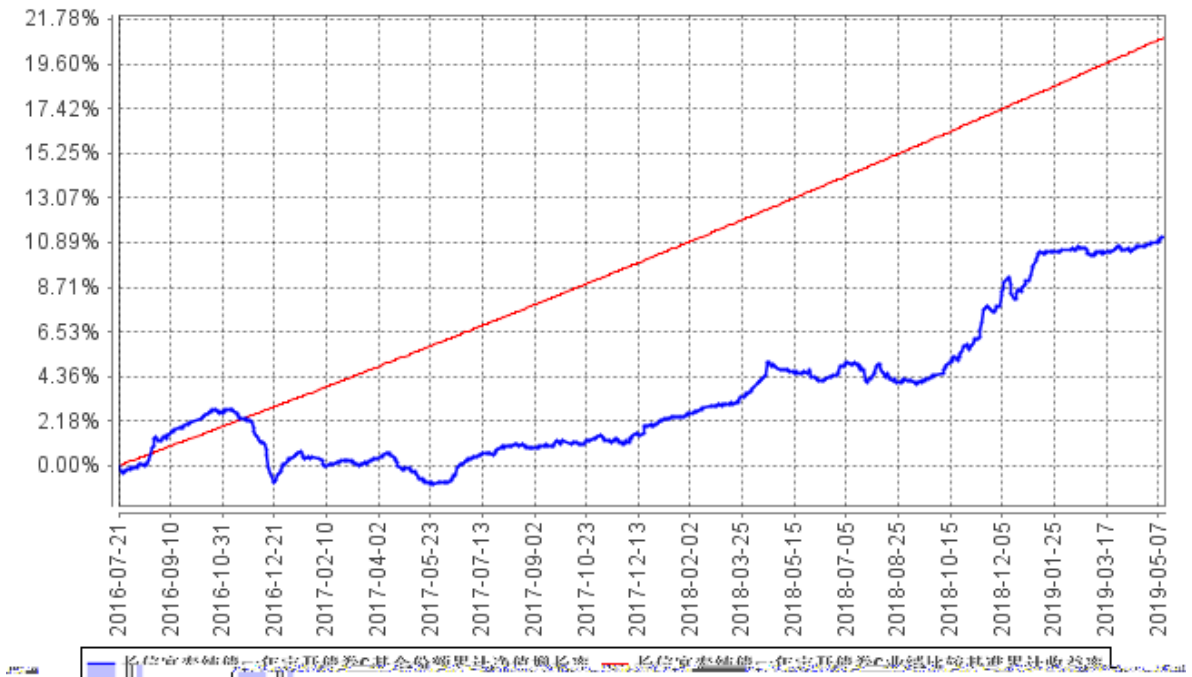
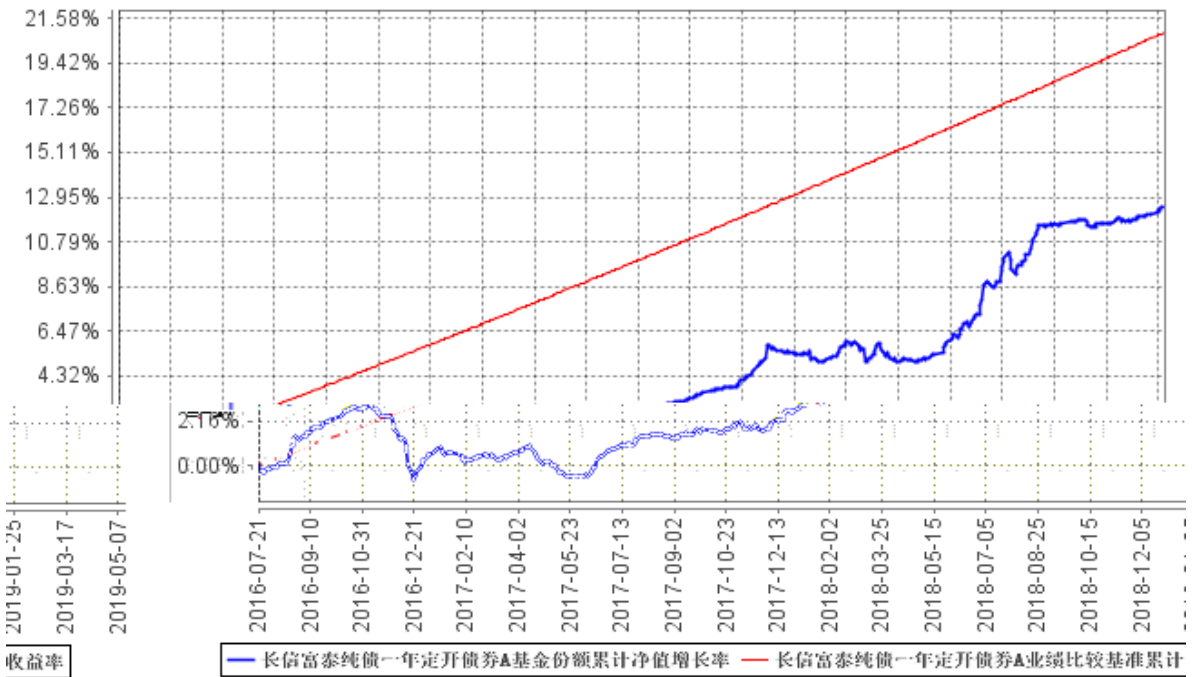
3.2

A

2019 4 1 -2019 5 13	0.48%	0.05%	0.80%	0.02%	-0.32%	0.03%

C

2019 4 1 -2019 5 13	0.45%	0.05%	0.80%	0.02%	-0.35%	0.03%



1 2016 7 21 2019 5 13

2 6

§

		2016 7 28	2019 5 13	8	5 2016

1

/

2

		2019 5 14	-	8	5 2016

1

/

2

3 2019 5 14

4.2

4.5

2019 6 30	A	1.1213	1.1309
	C	1.1120	1.1177
	A	0.48%	C
0.45%		0.80%	A
0.64%	C	0.59%	0.64%

2017 7 28	2017 10 25	2019 5 13	2019 5
14		2019 6 11	

§

5.1

			%
1		-	-
		-	-
2		-	-
3		11,574,085.00	76.53
		11,574,085.00	76.53
		-	-
4		-	-
5		-	-

6		-	-
		-	-
7		1,221,009.85	8.07
8		2,328,708.21	15.40
9		15,123,803.06	100.00

5.2

5.3

5.4

1		2,954,810.00	25.96
2		-	-
3		8,619,275.00	75.72
		8,619,275.00	75.72
4		-	-
5		-	-
6		-	-
7		-	-
8		-	-
9		-	-
10		11,574,085.00	101.68

5.5

--	--	--	--	--	--

1	018006	1702	29,950	3,057,895.00	26.87
2	108604	1805	24,000	2,428,080.00	21.33
3	180203	18 03	20,000	2,052,000.00	18.03
4	019536	16 08	12,600	1,196,244.00	10.51
5	019547	16 19	12,100	1,109,086.00	9.74

5.6

5.8

5.10

1		17,945.54
2		103,946.70
3		-
4		200,464.09
5		2,006,351.88
6		-
7		-
8		-
9		2,328,708.21

5.1

			%
1		-	-
		-	-
2		-	-
3		7,444,620.00	88.81
		7,444,620.00	88.81
		-	-
4		-	-
5		-	-
6		-	-
		-	-

7		821,063.32	9.79
8		116,910.06	1.39
9		8,382,593.38	100.00

5.2

5.3

5.4

1		698,880.00	9.75
2		-	-
3		6,745,740.00	94.14
		6,745,740.00	94.14
4		-	-
5		-	-
6		-	-
7		-	-
8		-	-
9		-	-
10		7,444,620.00	103.90

5.5

1	180203	18 03	50,000	5,134,500.00	71.66
2	018007	1801	15,000	1,509,450.00	21.07
3	019611	19 01	7,000	698,880.00	9.75

4	018006	1702	1,000	101,790.00	1.42
---	--------	------	-------	------------	------

5.6

5.8

		/			
-	-	-	-	-	-
					-
					-2,750.00
					5,550.00

IRR

5.10

1		20,161.39
2		-
3		-
4		96,748.67
5		-
6		-
7		-
8		-
9		116,910.06

§

	A	C
2019 5 14	4, 128, 623. 59	2, 320, 352. 04
	51, 323. 70	4, 106, 577. 09
:	112, 603. 13	292, 605. 98
"_"	–	–
	4, 067, 344. 16	6, 134, 323. 15

§ 6

§

§

		20%						
	1	2019 4 1 2019 4 28	14,563,758.39	0.00	14,563,758.39	0.00	0.00%	
	-	-	-	-	-	-	-	
1								
2								
3								

§

9.1

1

2

3

4

5

6

7

8

9

9.2

9.3

<http://www.cxfund.com.cn>

2019 7 18