

**LOF**

**2019**

2019 6 30

2019 8 27

§

2019 8 22

2019 1 1      2019 6 30

§

	LOF	
	163003	
	2016 6 25	
	314, 735, 184. 68	
	2016 7 22	
	(LOF) A	(LOF) C
:	-	
	163008	163003
	289, 444, 070. 75	25, 291, 113. 93

1

2011 6 24

5

2016 6 24

A

B

LOF

2

2017 1 9

LOF

C

A

2017 1 4

LOF

3

LOF C


		021-61009999	010-68858113
		zhouyg@cxfund.com.cn	tiandonghui@psbcoa.com.cn
		4007005566	95580
		021-61009800	010-68858120

	www.cxfund.com.cn
	68 9 3 A

§

	(LOF) A	(LOF) C
3.1.1	(2019 1 1 - 2019 6 30 )	(2019 1 1 - 2019 6 30 )
	5,543,055.26	427,694.43
	3,764,608.41	287,593.34
	0.0108	0.0097
	1.76%	1.60%
3.1.2	( 2019 6 30 )	
	0.0354	0.0225
	187,323,678.44	16,101,944.32
	0.6472	0.6367

1

2

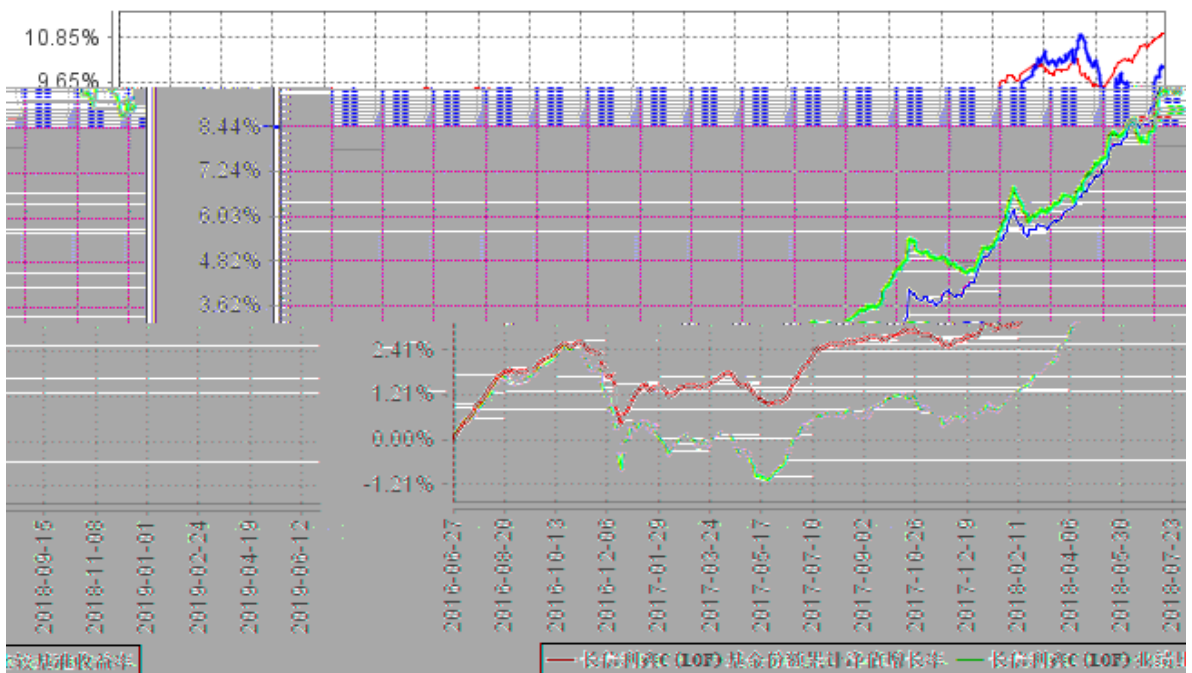
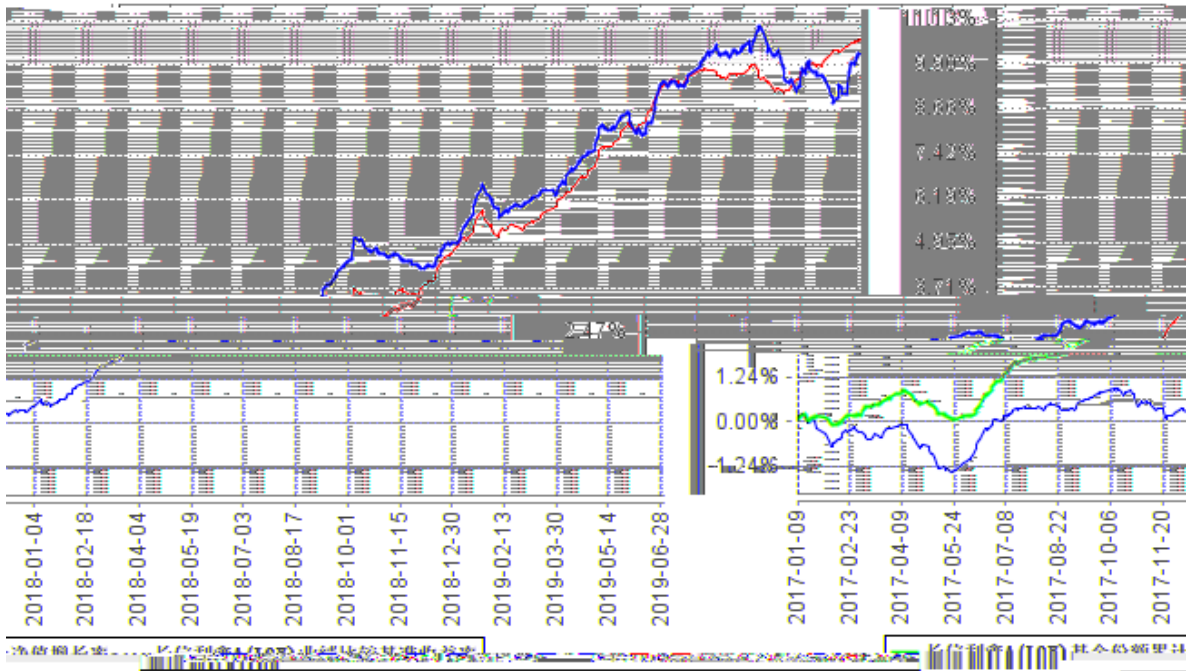
(LOF) A

	0.67%	0.16%	0.53%	0.03%	0.14%	0.13%
	-0.35%	0.15%	0.65%	0.06%	-1.00%	0.09%
	1.76%	0.13%	1.82%	0.06%	-0.06%	0.07%
	5.40%	0.11%	6.08%	0.06%	-0.68%	0.05%
	10.21%	0.08%	10.64%	0.07%	-0.43%	0.01%

LOF C

	0.65%	0.16%	0.53%	0.03%	0.12%	0.13%
	-0.44%	0.15%	0.65%	0.06%	-1.09%	0.09%

	1.60%	0.13%	1.82%	0.06%	-0.22%	0.07%
	5.05%	0.11%	6.08%	0.06%	-1.03%	0.05%
	9.91%	0.08%	10.76%	0.08%	-0.85%	0.00%
	10.07%	0.08%	10.97%	0.07%	-0.90%	0.01%



1

2017 1 9

LOF

C

A

---

2	2016 6 25	LOF A	2017 1
9	2019 6 30	LOF C	2016 6 25
2019 6 30			
3			6
2011 6 24	2016 6 25		

§

2003 63  
1.65  
44.55%  
31.21% 15.15% 4.55%  
4.54%  
2019 6 30 65

100

(LOF)

(LOF)

LOF

500

FOF

300

	(LOF)	2011 6 24	-	25	EMBA  2004 9  (LOF)

---

--	--	--	--	--	--

1

/

2

5%

2019

4

“ ”

5

5

2019	6	30	A	0.6472	1.0792
C		0.6367		1.0687	A
1.76%,	C		1.60%		1.82%

2008 9 12 [2008]38

“ ”

1/2

LOF

1

2

12

10%

3

4



§

§

LOF

2019 6 30

	2019 6 30	2018 12 31
	6,250,165.07	1,047,813.32
	158,537.74	228,115.46
	13,227.82	7,759.75
	270,252,872.92	316,586,363.35
	-	-
	-	-
	270,252,872.92	316,586,363.35
	-	-
	-	-
	-	-
	-	-
	543,429.45	-
	3,755,039.54	7,499,208.64
	-	-
	1,647.62	60,770.76
	-	-
	-	-
	280,974,920.16	325,430,031.28
	2019 6 30	2018 12 31

	37,815.86	148,778.26
	-	-
	-	-
	123,496.57	231,347.26
	77,549,297.40	85,032,713.34
	192,559,328.06	231,525,441.40
	10,866,294.70	8,871,876.54
	203,425,622.76	240,397,317.94
	280,974,920.16	325,430,031.28

2019 6 30

(LOF)A

0.6472

(LOF)C

0.6367

314,735,184.68

(LOF)A

289,444,070.75

(LOF)C

25,291,113.93

LOF

2019 1 1

2019 6 30

	2019 1 1 6 30	2019 6 30	2018 1 1 6 30	2018 6 30
		6,150,162.99		10,349,964.48
1.		6,313,075.21		10,652,730.80
		28,749.49		44,959.55
		6,232,217.02		10,281,085.07
		-		-
		52,108.70		326,686.18
		-		-
2.	-	1,737,622.28		-3,213,460.95
		-		-
		-		-
		1,737,622.28		-3,213,460.95
		-		-
		-		-
		-		-
3.		-1,918,547.94		2,878,781.85
" -				
4.	-	-		-

5.	-	18,013.44	31,912.78
		2,097,961.24	2,961,898.83
1		848,367.51	1,243,693.13
2		242,390.73	355,340.85
3		32,535.08	41,445.48
4		11,631.02	9,396.54
5		815,851.03	1,109,997.41
		815,851.03	1,109,997.41
6		17,152.84	34,657.90
7		130,033.03	167,367.52
	-”	4,052,201.75	7,388,065.65
		-	-
	-	4,052,201.75	7,388,065.65

## LOF

2019 1 1 2019 6 30

	2019 1 1 2019 6 30		
	231,525,441.40	8,871,876.54	240,397,317.94
	-	4,052,201.75	4,052,201.75
-	-38,966,113.34	-2,057,783.59	-41,023,896.93
1.	23,064,452.94	1,290,684.09	24,355,137.03
2.	-62,030,566.28	-3,348,467.68	-65,379,033.96
	-	-	-

-			
	192,559,328.06	10,866,294.70	203,425,622.76
	<b>2018 1 1 2018 6 30</b>		
	459,724,361.96	14,709,999.70	474,434,361.66
	-	7,388,065.65	7,388,065.65
-	-130,707,506.18	-4,506,909.43	-135,214,415.61
1.	2,321,678.89	89,734.89	2,411,413.78
2.	-133,029,185.07	-4,596,644.32	-137,625,829.39
	-	-	-
-			
	329,016,855.78	17,591,155.92	346,608,011.70

6.1 6.4



(LOF) ( “ ” )

” ) ( “ [2011] 603 )

( “ ” ) 2011 6

24 5 2016 6 24

(LOF) “

(LOF) ” 2016 6 25

2016 6 25 “ (LOF) ”

2017 1 4

(LOF) 2017 1 9 A (

“ (LOF)A” ) (LOF)A

C ( “ (LOF)C” )

(LOF)C 0.35%

(LOF)

( )

(

)

80%

20%

5%

( “ ” )



20%

20%

A 0.10% ( )

( “ ” )	
( “ ” )	
( “ ” )	

	2019 1 1		2019 6 30		2018 1 1		2018 6 30	
	119,025,585.84	56.31%	156,774,051.44	72.53%				



	61,500,000.00	51.04%	343,500,000.00	70.35%

	2019 1 1 30	2019 6	2018 1 1	2018 6 30
		848,367.51		1,243,693.13
		18,151.09		21,530.55

0.70%

= 0%±

	2019 1 1 30	2019 6	2018 1 1	2018 6 30
		242,390.73		355,340.85

0.20%

=

--	--

	2019 1 1			2019 6 30		
	(LOF) A			(LOF) C		
		-		9,807.44		9,807.44
	-		507.32		507.32	
	-		5.58		5.58	
	-		10,320.34		10,320.34	
	2018 1 1			2018 6 30		
	(LOF) A			(LOF) C		
		-		11,779.28		11,779.28
	-		3,238.30		3,238.30	
	-		5.43		5.43	
	-		15,023.01		15,023.01	

(LOF) A

(LOF) C

(LOF) C

=

(LOF) C

	2019 1 1			2019 6 30			2018 1 1			2018 6 30		

	6,250,165.07	26,453.57	1,743,005.11	41,284.22
--	--------------	-----------	--------------	-----------

2019 6 30

“ ” 2018 12 31

6.4.8.1

2019 6 30

75,836,006.24

190301	19 01	2019 7 8	99.84	100,000	9,984,000.00
101800329	18 MFN001	2019 7 3	102.77	100,000	10,277,000.00
1380032	13	2019 7 8	101.73	182,000	18,514,860.00
101800710	18 MFN008	2019 7 5	102.01	194,000	19,789,940.00
101772011	17 MFN001	2019 7 4	102.18	100,000	10,218,000.00
180402	18 02	2019 7 2	102.59	100,000	10,259,000.00
				776,000	79,042,800.00





2% 20

1		-	-
2		-	-
3		30,227,000.00	14.86
		30,227,000.00	14.86
4		102,347,000.00	50.31
5		20,000,000.00	9.83
6		71,354,000.00	35.08
7		46,324,872.92	22.77
8		-	-
9		-	-
10		270,252,872.92	132.85

1	101800329	18	MTN001	200,000	20,554,000.00	10.10
2	101800710	18	MTN008	200,000	20,402,000.00	10.03
3	1380032	13		200,000	20,346,000.00	10.00
4	011901175	19	SCP003	200,000	20,000,000.00	9.83
5	190301	19	01	200,000	19,968,000.00	9.82

1		13, 227. 82
2		543, 429. 45
3		-
4		3, 755, 039. 54
5		1, 647. 62
6		-
7		-
8		

1	110041		2, 235, 000. 00	1. 10
2	113020		1, 782, 300. 00	0. 88
3	128048		1, 571, 701. 60	0. 77
4	113511		1, 418, 890. 00	0. 70
5	110048		1, 362, 177. 40	0. 67
6	113019		1, 201, 310. 00	0. 59
7	113523		729, 550. 80	0. 36
8	113508		721, 517. 10	0. 35
9	110049		661, 760. 00	0. 33
10	113509		582, 088. 50	0. 29
11	128017		579, 095. 00	0. 28
12	123002		510, 135. 00	0. 25
13	113014		478, 550. 00	0. 24
14	113515		345, 420. 00	0. 17
15	110033		334, 350. 00	0. 16
16	110047		325, 830. 00	0. 16
17	128034		321, 090. 00	0. 16
18	110043		201, 820. 00	0. 10
19	128033		130, 806. 00	0. 06
20	128013		95, 680. 00	0. 05

§

	( )					
LOF A	88	3,289,137.17	289,136,577.71	99.89%	307,493.04	0.11%
LOF C	3,124	8,095.75	333,595.68	1.32%	24,957,518.25	98.68%
	3,212	97,987.29	289,470,173.39	91.97%	25,265,011.29	8.03%

LOF C

1		2,618,304.00	36.08%
2		1,703,594.00	23.48%
3		1,175,230.00	16.19%
4		989,108.00	13.63%
5		233,497.00	3.22%
6		99,844.00	1.38%
7		95,235.00	1.31%
8		88,800.00	1.22%
9		62,056.00	0.86%
10		50,987.00	0.70%

	LOF A	-	-
	LOF C	1,137.26	0.00%

		1,137.26	0.00%
--	--	----------	-------

	LOF A	0
	LOF C	0
		0
	LOF A	0
	LOF C	0
		0

## § 9

	LOF A	LOF C
2016 6 25	-	382,306,241.59
	349,614,817.86	28,805,799.46
	32,296,461.24	5,403,064.81
:	92,467,208.35	8,917,750.34
"_ "	-	-
	289,444,070.75	25,291,113.93

§

2019 3 2

--	--	--	--	--	--

	1	-	-	-	-	-
	1	-	-	-	-	-

	119,025,585.84	56.31%	61,500,000.00	51.04%	-	-
	92,356,580.89	43.69%	59,000,000.00	48.96%	-	-

1

2

1998 29

2007 48

1

1

2

3

4

2

§

		20%					
1	2019 1 1 2019 6 30	94,190,315.18	0.00	0.00	94,190,315.18	29.93%	
	2019 1 1 2019 6 30	161,136,336.19	0.00	0.00	161,136,336.19	51.20%	
-	-	-	-	-	-	-	
1							
2							
3							

2019 8 27