

2023 3

2023 9 30

2023 10 25

§1

2023 10 23

2023 7 1 2023 9 30

§2

	012493	
	2021 7 1	
	969,642,604.60	
	*30%+	*60%+
	800	
		*10%
	A	C
	012493	012494
	867,039,518.69	102,603,085.91

§3

3.1

	2023 7 1	-2023 9 30
	A	C
1.	-30,342,588.67	-3,588,177.29
2.	-22,673,021.13	-4,963,699.90
3.	-0.0257	-0.0436
4.	546,217,565.37	63,772,030.76
5.	0.6300	0.6215

1

2

3.2

3.2.1

A

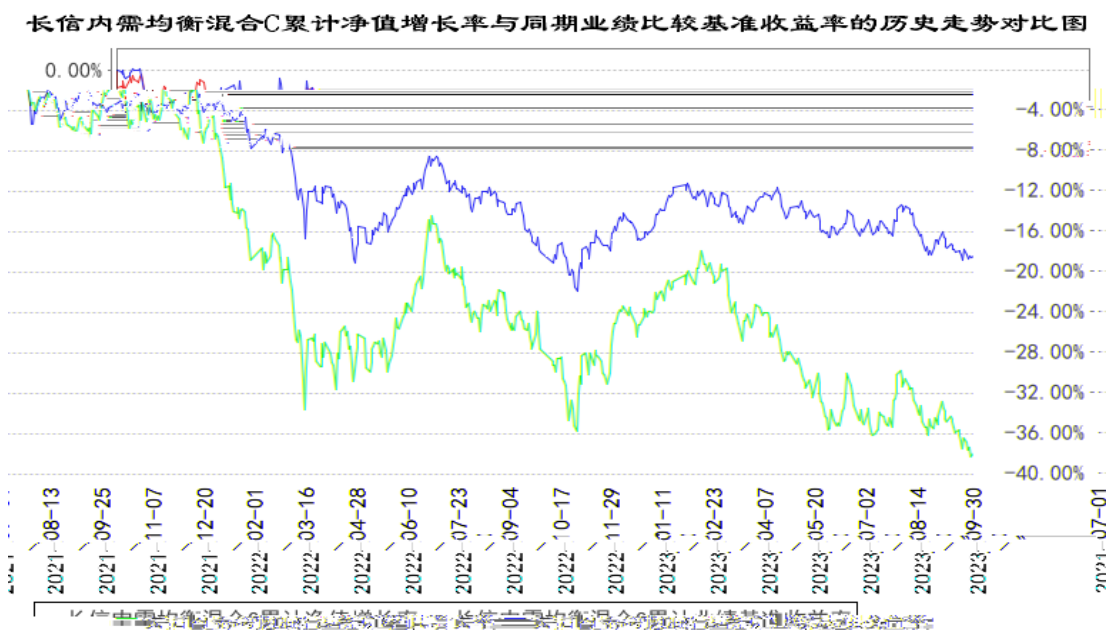
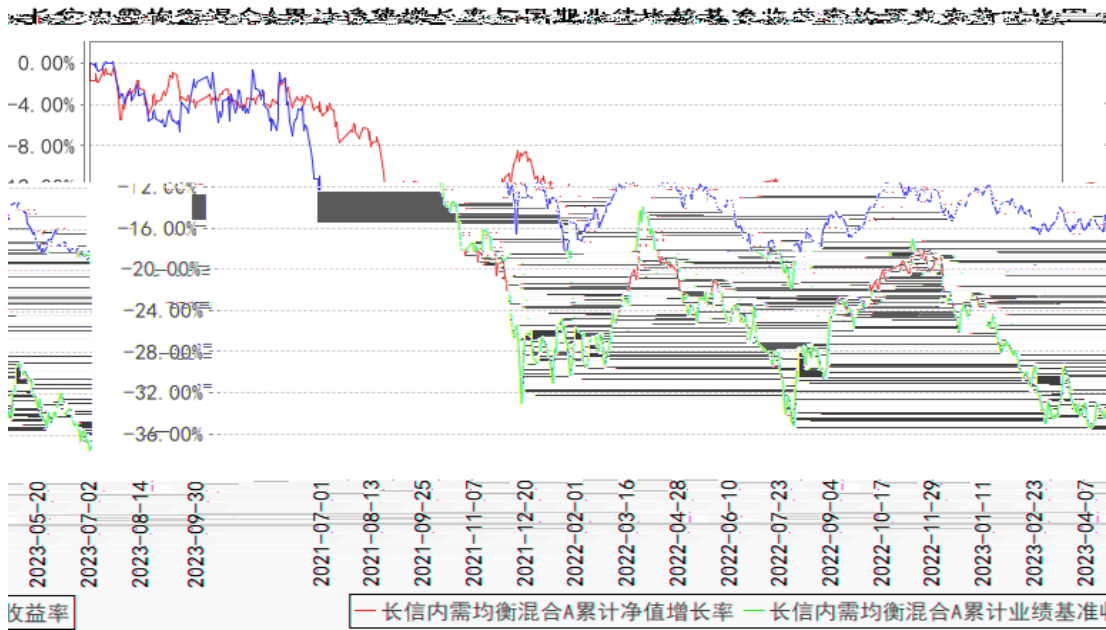
	-4.04%	1.28%	-3.14%	0.63%	-0.90%	0.65%
	-18.74%	1.28%	-6.10%	0.60%	-12.64%	0.68%
	-13.58%	1.35%	-0.39%	0.68%	-13.19%	0.67%
	-37.00%	1.42%	-18.41%	0.76%	-18.59%	0.66%

C

--	--	--	--	--	--	--

	-4.19%	1.28%	-3.14%	0.63%	-1.05%	0.65%
	-18.99%	1.28%	-6.10%	0.60%	-12.89%	0.68%
	-14.10%	1.35%	-0.39%	0.68%	-13.71%	0.67%
	-37.85%	1.42%	-18.41%	0.76%	-19.44%	0.66%

3.2.2



1 2021 7 1 2023 9 30

2

6

§4

4.1

		2022 2 25	-	10	2018 11

1

2

4.2

4.3

4.3.1

4.3.2

5%

4.4

2023

8

2019

4.5

2023	9	30	A	0.6300
0.6300			A	-4.04%
	0.6215			C
		0.6215		C
-4.19%			-3.14%	

4.6

§5

5.1

			%
1		557,068,786.96	91.07
		557,068,786.96	91.07
2		-	-
3		40,685,224.66	6.65
		40,685,224.66	6.65

		-	-
4		-	-
5		-	-
6		-	-
		-	-
7		4,129,987.38	0.68
8		9,778,370.31	1.60
9		611,662,369.31	100.00

126,481,512.71

20.74%

5.2

5.2.1

			%
A		31,989,689.46	5.24
B		-	-
C		360,678,245.49	59.13
D		42,627.73	0.01
E		-	-
F		24,357,214.56	3.99
G		14,342.22	0.00
H		-	-
I		206,161.38	0.03
J		-	-
K		-	-
L		13,260,395.00	2.17
M		13,371.20	0.00
N		25,227.21	0.00
O		-	-
P		-	-
Q		-	-
R		-	-
S		-	-
		430,587,274.25	70.59

5.2.2

		%
	-	-

	87,198,589.09	14.30
	6,700,075.45	1.10
	-	-
	4,645,024.71	0.76
	8,579.84	0.00
	-	-
	-	-
	27,929,243.62	4.58
	-	-
	-	-
	126,481,512.71	20.74

5.3

5.3.1

					%
1	600519		33,100	59,532,005.00	9.76
2	000568		235,749	51,075,020.85	8.37
3	000596		135,800	36,910,440.00	6.05
4	603345		294,900	36,567,600.00	5.99
5	03690	-W	333,200	35,039,444.61	5.74
6	603198		453,700	33,369,635.00	5.47
7	600559		1,333,473	30,936,573.60	5.07
8	000858		192,000	29,971,200.00	4.91
9	00700		99,400	27,929,243.62	4.58
10	603517		736,800	27,688,944.00	4.54

5.4

				%
1			10,154,019.18	1.66
2			-	-
3			30,531,205.48	5.01
			30,531,205.48	5.01
4			-	-
5			-	-
6			-	-
7			-	-
8			-	-
9			-	-
10			40,685,224.66	6.67

5.5

					%

1	220411	22	11	300,000	30,531,205.48	5.01
2	019688	22	23	100,000	10,154,019.18	1.66

5.6

5.7

5.8

5.9

5.9.1

5.9.2

5.10

5.10.1

5.10.2

5.10.3

5.11

5.11.1

5.11.2

5.11.3

1		232,013.86
2		9,405,991.61
3		120,290.24
4		-
5		20,074.60
6		-
7		-
8		9,778,370.31

5.11.4

5.11.5

5.11.6

§6

/	-	-
/	-	-
	17,154,864.79	-
%	1.77	-

7.2

§8

8.1

20%

20%

8.2

§9

9.1

1

2

3

4

5

6

9.2

9.3

<https://www.cxfund.com.cn>