

2024 2

2024 6 30

2024 7 19



§3

3.1

	2024 4 1 -2024 6 30	
	A	C
1.	396,229.94	124,511.96
2.	-1,674,359.25	-501,624.11
3.	-0.1564	-0.1475
4.	11,183,036.65	3,469,906.95
5.	1.0435	1.0312

1

2

3.2

3.2.1

A

	-13.06%	31%	-8.40%	0.81%	-4.66%	0.50%	
	-18.83%	8%	-7.08%	0.92%	-11.75%	0.56%	
	-23.73%	3%	-12.46%	0.88%	-11.27%	0.45%	
	-52.77%	3%	-31.13%	1.11%	-21.64%	0.52%	
	-10.89%	2%	9.01%	1.20%	-19.90%	0.42%	
	4.35%	6%	32.82%	1.27%	-28.47%	0.29%	

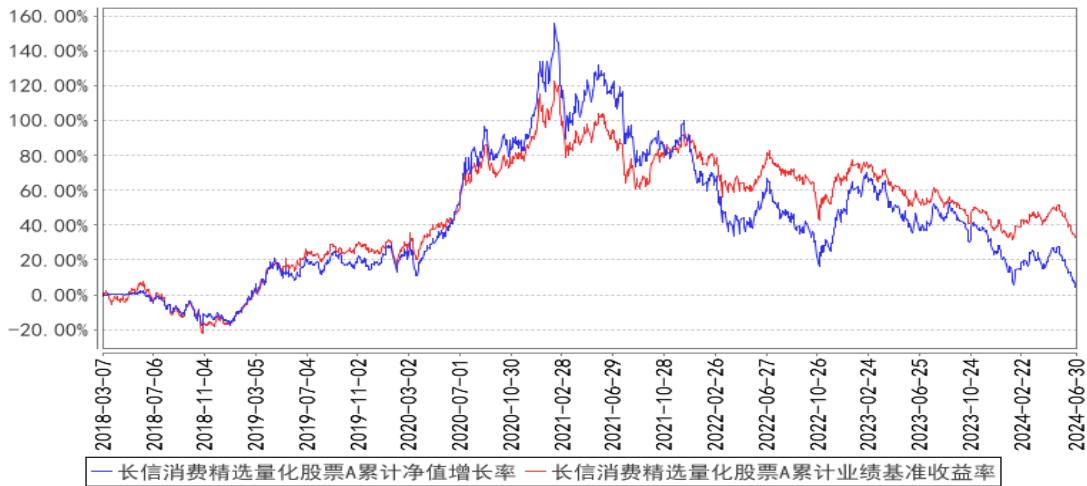
C

--	--	--	--	--	--	--	--

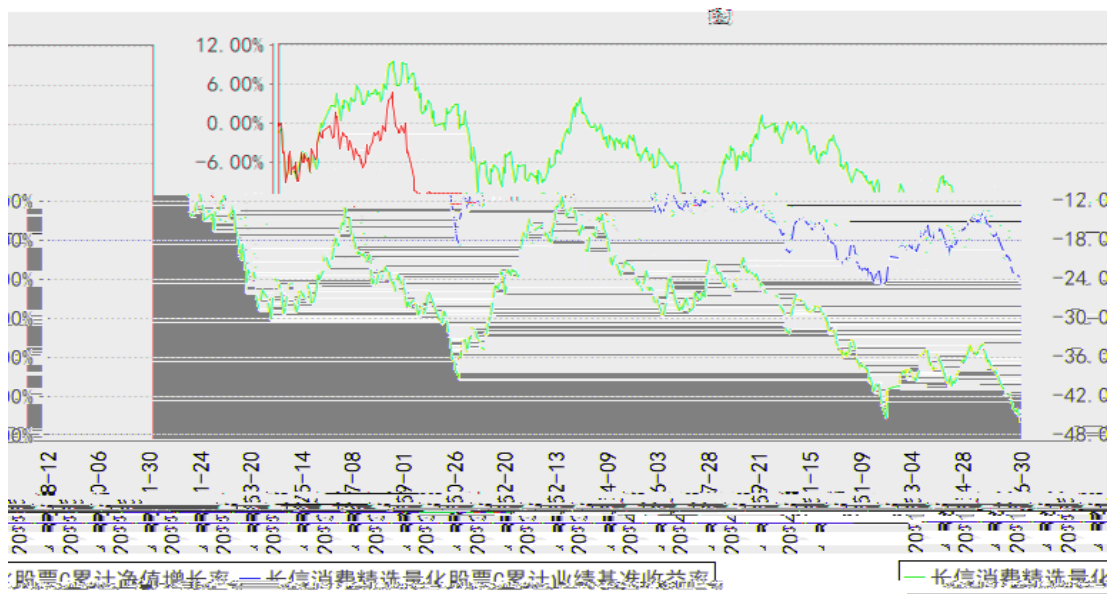
	-13.15%	1.31%	-8.40%	0.81%	-4.75%	0.50%
	-18.99%	1.48%	-7.08%	0.92%	-11.91%	0.56%
	-24.04%	1.33%	-12.46%	0.88%	-11.58%	0.45%
	-46.01%	1.60%	-24.39%	1.08%	-21.62%	0.52%

### 3.2.2

长信消费精选量化股票A累计净值增长率与同期业绩比较基准收益率的历史走势对比图



长信消费精选量化股票C累计净值增长率与同期业绩比较基准收益率的历史走势对比图





4.3

2024 6 30 , A 1.0435 ,  
 1.0435 , A -13.06% C  
 1.0312 , 1.0312 , C  
 -13.15%, -8.40%

#### 4.6

2023 4 7 2024 6 30

### §5

#### 5.1

			%
1		13,347,521.99	89.00
		13,347,521.99	89.00
2		-	-
3		609,369.04	4.06
		609,369.04	4.06
		-	-
4		-	-
5		-	-
6		-	-
		-	-
7		1,006,802.27	6.71
8		33,153.01	0.22
9		14,996,846.31	100.00

#### 5.2

##### 5.2.1

			%
A		-	-
B		-	-
C		13,066,126.89	89.17
D		429.10	0.00



4		-	-
5		-	-
6		-	-
7		-	-
8		-	-
9		-	-
10		609,369.04	4.16

## 5.5

						%
1	019709	23	16	6,000	609,369.04	4.16

## 5.6

## 5.7

## 5.8

## 5.9

## 5.9.1

## 5.9.2

## 5.10

## 5.10.1

## 5.10.2

## 5.10.3

5. 11

5. 11. 1

**§7**

7.1

7.2

**§8**

8.1

20%

20%

8.2

**§9**

9.1

1

2

3

4

5

6

9.2

9.3

<https://www.cxfund.com.cn>