

2025 2

2025 6 30

2025 7 21

§1

2025 7 17

2025 4 1 2025 6 30

§2

	519975
	2015 2 4
	161,582,366.77
	700 × 75%
	× 25%
	A
	C
	CXLHZXA
	-

	519975	023752
	143,462,136.04	18,120,230.73

2025 4 3

A C

2025 4 1

C

§3

3.1

	2025 4 1 -2025 6 30	2025 4 3 -2025 6 30
	A	C
1.	9,163,484.38	1,211,982.33
2.	11,018,572.63	1,873,288.09
3.	0.0746	0.2192
4.	220,785,255.33	27,875,831.70
5.	1.539	1.538

1

C

2025 4 3

2025 4 1

C

C

C

C

A

C

2

3

3.2

3.2.1

A

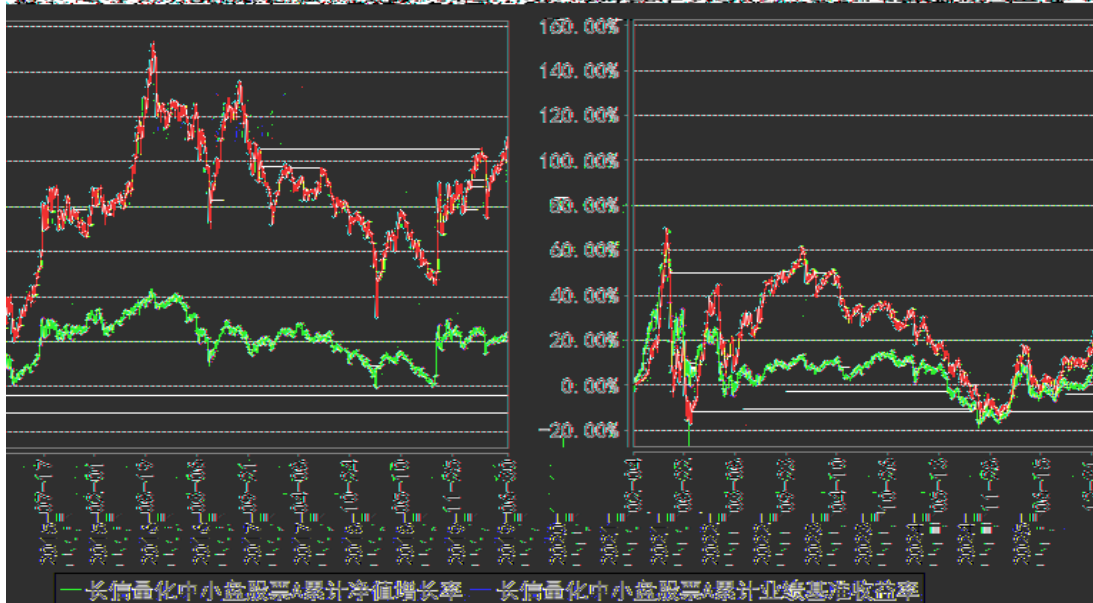
	5.34%	1.78%	1.25%	1.01%	4.09%	0.77%
	14.08%	1.54%	1.60%	0.92%	12.48%	0.62%
	28.89%	1.77%	14.26%	1.21%	14.63%	0.56%
	-5.47%	1.46%	-3.12%	0.94%	-2.35%	0.52%
	34.53%	1.47%	7.93%	0.96%	26.60%	0.51%
	111.33%	1.64%	23.95%	1.17%	87.38%	0.47%

C

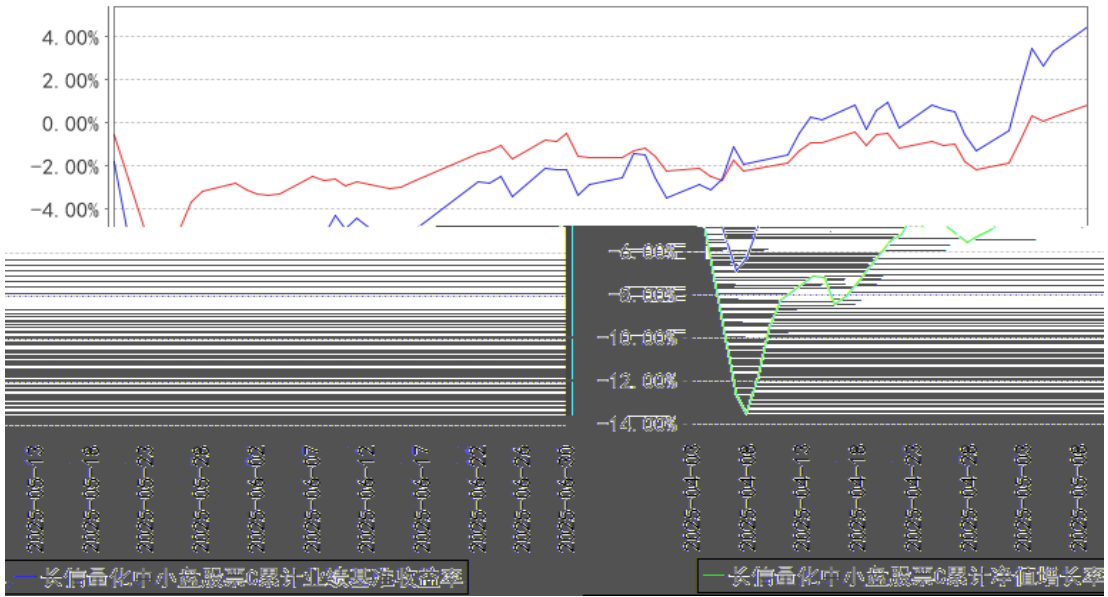
	4.48%	1.81%	0.85%	1.03%	3.63%	0.78%

3.2.2

长信量化中小盘股票A累计净值增长率与同期业绩比较基准收益率的历史走势对比图



长信量化中小盘股票C累计净值增长率与同期业绩比较基准收益率的历史走势对比图



1 2025 4 3

A C

2 A 2015 2 4 2025 6 30

C 2025 4 3 2025 6 30

3 6

§4

4.1

		2015 14	3	-	15
					2010 7
					LOF 100
					LOF LOF

	50				
	1000				300
					LOF
					50
					1000

1

2

4.2

4.3

4.3.1

4.3.2

5%

4.4

A

" + "

5.1

			%
1		235,231,396.45	93.88
		235,231,396.45	93.88
2		-	-
3		12,456,280.77	4.97
		12,456,280.77	4.97
		-	-
4		-	-
5		-	-
6		-	-
		-	-
7		1,840,107.69	0.73

Q

5.7

5.8

5.9

5.9.1

5.9.2

5.10

5.10.1

5.10.2

5.10.3

5.11

5.11.1

5.11.2

5.11.3

--	--	--

7.2

§8

8.1

20%

20%

8.2

§9

9.1

1

2

3

4

5

6

9.2

9.3

<https://www.cxfund.com.cn>

2025 7 21