

2025 3

2025 9 30

2025 10 28



	A	C
		-
	519994	015039
	7,247,034,485.95	2,703,316,668.13

### §3

#### 3.1

	2025 7 1	-2025 9 30
	A	C
1.	740,361,729.28	190,536,186.11
2.	1,062,803,239.62	279,144,751.53
3.	0.1204	0.1331
4.	4,030,038,517.47	1,516,080,249.87
5.	0.5561	0.5608

1

2

#### 3.2

##### 3.2.1

A

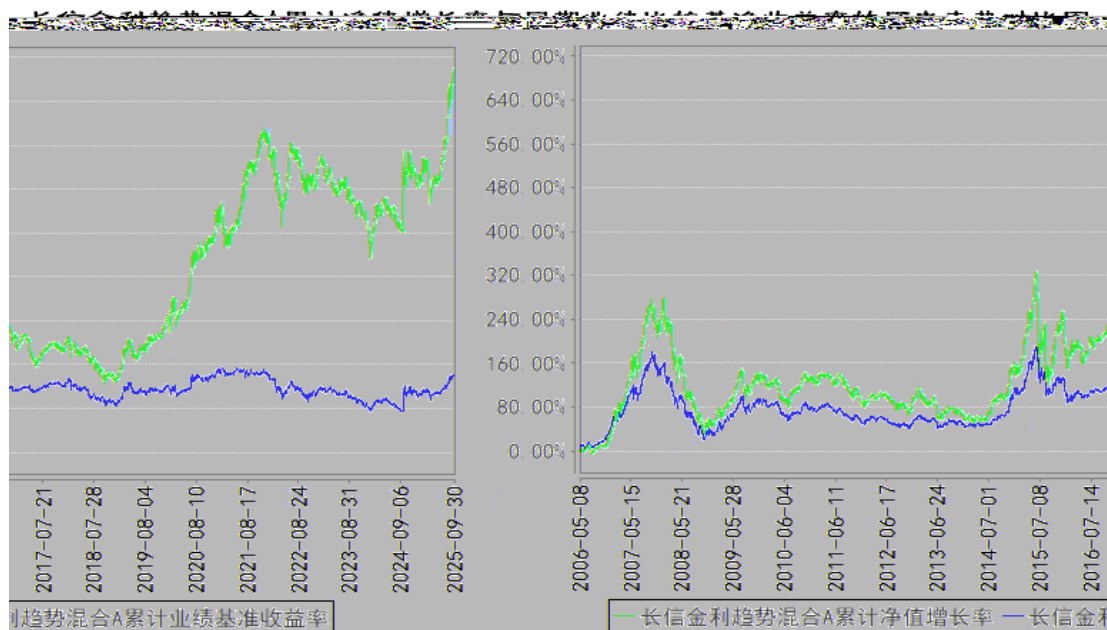
	28.85%	1.09%	15.28%	0.71%	13.57%	0.38%
	32.31%	1.20%	16.71%	0.83%	15.60%	0.37%
	31.04%	1.35%	15.37%	1.00%	15.67%	0.35%
	36.95%	1.16%	20.77%	0.90%	16.18%	0.26%
	74.35%	1.20%	6.05%	0.88%	68.30%	0.32%
	702.04%	1.59%	143.53%	1.08%	558.51%	0.51%

--	--	--	--	--	--	--

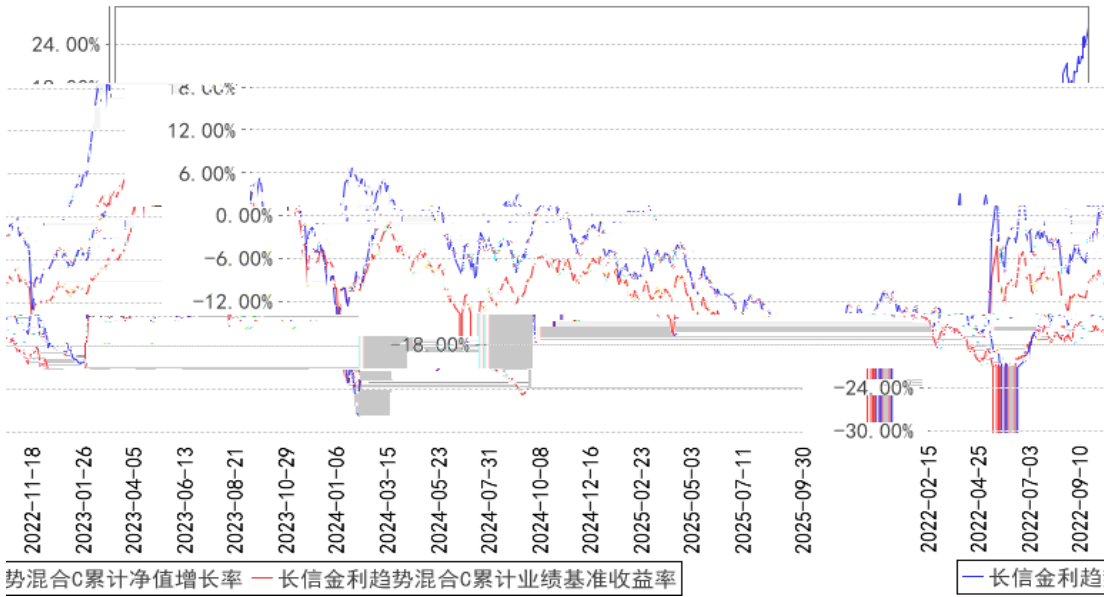
C

	28.65%	1.09%	15.28%	0.71%	13.37%	0.38%
	31.92%	1.20%	16.71%	0.83%	15.21%	0.37%
	30.23%	1.36%	15.37%	1.00%	14.86%	0.36%
	34.48%	1.16%	20.77%	0.90%	13.71%	0.26%
	26.45%	1.20%	5.45%	0.93%	21.00%	0.27%

### 3.2.2



长信金利趋势混合C累计净值增长率与同期业绩比较基准收益率的历史走势对比图



1	2022	2	15						
	A		C						
2		A		2006	4	30	2025	9	30
C	2022	2	15				2025	9	30
3						6			

§4

4.1

		2018	8	-	15
		31			
					2014

2

## 4.2

## 4.3

### 4.3.1

### 4.3.2

5%

## 4.4

2025	A	12.73%	300
17.9%	28.37%	50.4%	
2025			
2025			2026
2026			
A			

## 4.5

2025	9	30	A	0.5561
------	---	----	---	--------

4.0869	A	28.85%	C
0.5608	0.7472		C
28.65%	15.28%		

#### 4.6

§5

#### 5.1

			%
1		4,737,212,279.88	84.63
		4,737,212,279.88	84.63
2		-	-
3		146,402,341.27	2.62
		146,402,341.27	2.62
		-	-
4		-	-
5		-	-
6		-	-
		-	-
7		708,928,496.28	12.67
8		4,826,450.51	0.09
9		5,597,369,567.94	100.00

#### 5.2

##### 5.2.1

			%
A		-	-
B		110,102,000.00	1.99
C		3,322,747,658.28	59.91
D		23,374,000.00	0.42
E		-	-
F		31,750,041.01	0.57
G		178,315,000.00	3.22
H		23,486,752.20	0.42

I		433,697,419.75	7.82
J		447,932,000.00	8.08
K		-	-
L		-	-
M		115,717,408.64	2.09
N		21,035,000.00	0.38
O		-	-
P		-	-
Q		-	-
R		29,055,000.00	0.52
S		-	-
		4,737,212,279.88	85.41

## 5.2.2

## 5.3

### 5.3.1

					%
1	300750		550,000	221,100,000.00	3.99
2	300604		1,700,000	169,354,000.00	3.05
3	002273		5,000,000	132,200,000.00	2.38
4	601628		3,050,000	120,902,000.00	2.18
5	688981		800,000	112,104,000.00	2.02
6	600481		17,500,000	105,875,000.00	1.91
7	300308		260,000	104,956,800.00	1.89
8	600522		5,200,000	98,384,000.00	1.77
9	002603		5,950,040	94,546,135.60	1.70
10	688256		70,000	92,750,000.00	1.67

## 5.4

				%
1			142,923,775.34	2.58
2			-	-
3			-	-
			-	-
4			-	-
5			-	-
6			-	-
7			3,478,565.93	0.06
8			-	-
9			-	-

10		146,402,341.27	2.64
----	--	----------------	------

## 5.5

					%
1	019734	24 03	1,400,000	142,923,775.34	2.58
2	110095		27,780	3,478,565.93	0.06

## 5.6

## 5.7

## 5.8

## 5.9

## 5.9.1

## 5.9.2

## 5.10

## 5.10.1

## 5.10.2

## 5.10.3

## 5.11

## 5.11.1

## 5.11.2

## 5.11.3

1		-
2		-
3		-
4		-
5		4,826,450.51
6		-
7		-
8		4,826,450.51

## 5.11.4

				%
1	110095		3,478,565.93	0.06

## 5.11.5

## 5.11.6

## §6

	A	C
	10,766,861,795.66	1,719,610,568.28
	853,518,630.90	2,155,163,477.76
:	4,373,345,940.61	1,171,457,377.91
-	-	-
	7,247,034,485.95	2,703,316,668.13

## §7

## 7.1

	A	C
	986,614.56	-
/	-	-
/	-	-
	986,614.56	-
%	0.01	-

7.2

§8

8.1

20%

20%

8.2

§9

9.1

1

2

3

4

5

6

7

9.2

9.3

2025 10 28