

2025 3

2025 9 30

2025 10 28

3.1

	2025 7 1 -2025 9 30			
	A	B	C	D
1.	1,055,028.24	124,608,120.46	2,367.08	35.93
2.	1,055,028.24	124,608,120.46	2,367.08	35.93
3.	305,240,176.26	33,196,024,258.91	800,034.18	11,553.54

1

2

3.2

3.2.1

A

	0.3378%	0.0005%	0.3456%	0.0000%	-0.0078%	0.0005%
	0.7128%	0.0006%	0.6886%	0.0000%	0.0242%	0.0006%
	1.5250%	0.0007%	1.3781%	0.0000%	0.1469%	0.0007%
	5.5703%	0.0017%	4.1955%	0.0000%	1.3748%	0.0017%
	10.2873%	0.0023%	7.0872%	0.0000%	3.2001%	0.0023%
	20.8583%	0.0030%	11.6764%	0.0000%	9.1819%	0.0030%

B

	0.3733%	0.0005%	0.3456%	0.0000%	0.0277%	0.0005%
	0.7837%	0.0006%	0.6886%	0.0000%	0.0951%	0.0006%
	1.6675%	0.0007%	1.3781%	0.0000%	0.2894%	0.0007%
	6.0161%	0.0017%	4.1955%	0.0000%	1.8206%	0.0017%
	11.0635%	0.0023%	7.0872%	0.0000%	3.9763%	0.0023%
	20.5762%	0.0030%	11.6764%	0.0000%	8.8998%	0.0030%

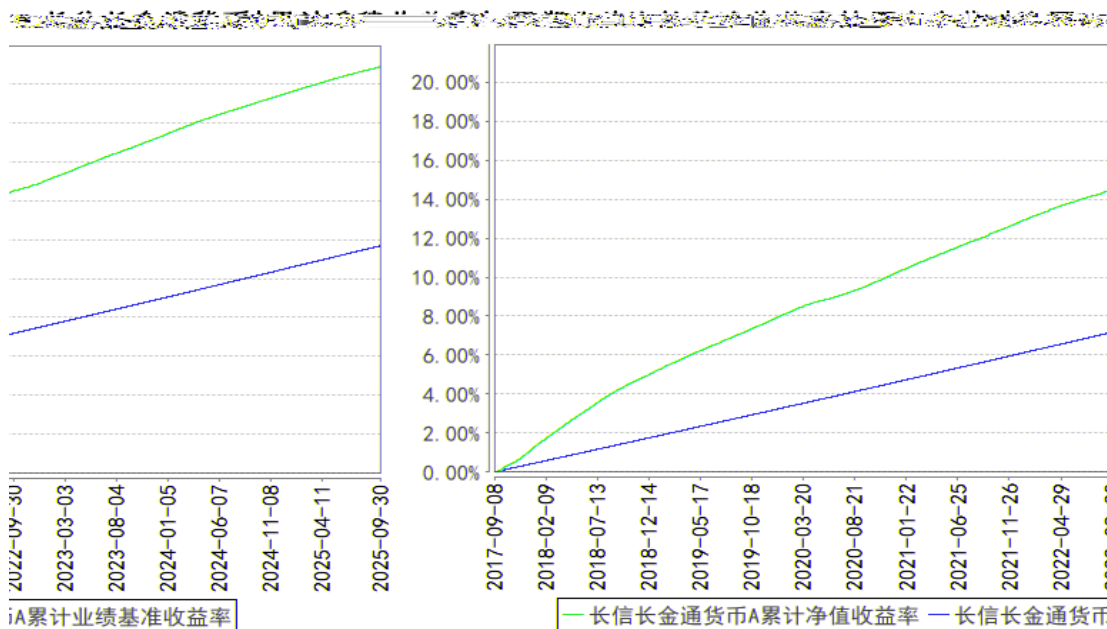
C

	0.3123%	0.0005%	0.3456%	0.0000%	-0.0333%	0.0005%
	0.6622%	0.0006%	0.6886%	0.0000%	-0.0264%	0.0006%
	1.4224%	0.0007%	1.3781%	0.0000%	0.0443%	0.0007%
	4.0638%	0.0017%	3.3317%	0.0000%	0.7321%	0.0017%

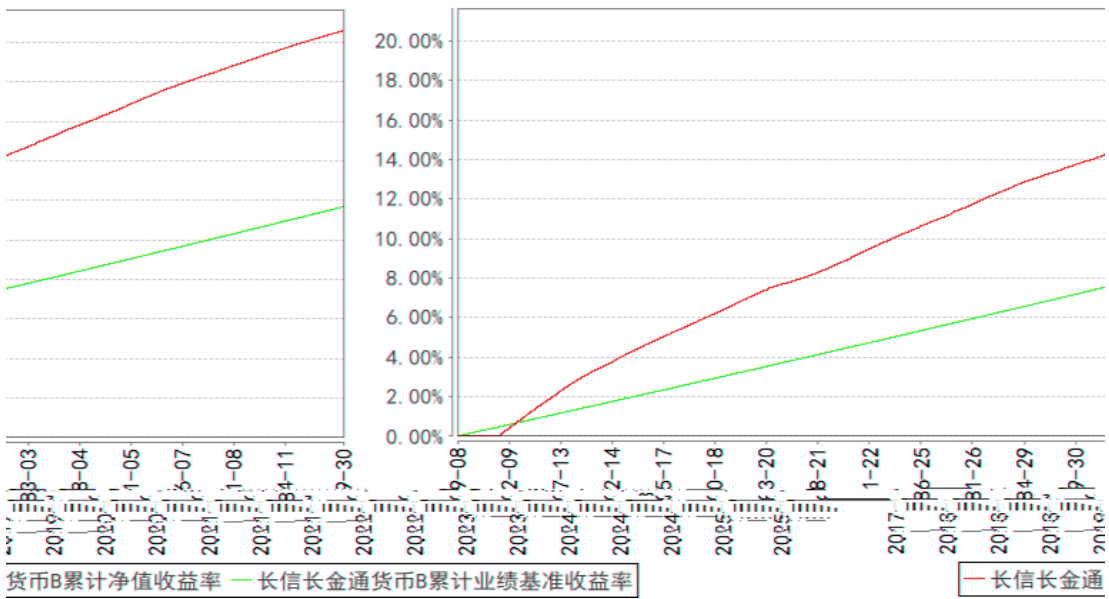
D

	0.3120%	0.0005%	0.3456%	0.0000%	-0.0336%	0.0005%
	0.6603%	0.0006%	0.6886%	0.0000%	-0.0283%	0.0006%
	1.4187%	0.0007%	1.3781%	0.0000%	0.0406%	0.0007%
	4.0628%	0.0018%	3.3317%	0.0000%	0.7311%	0.0018%

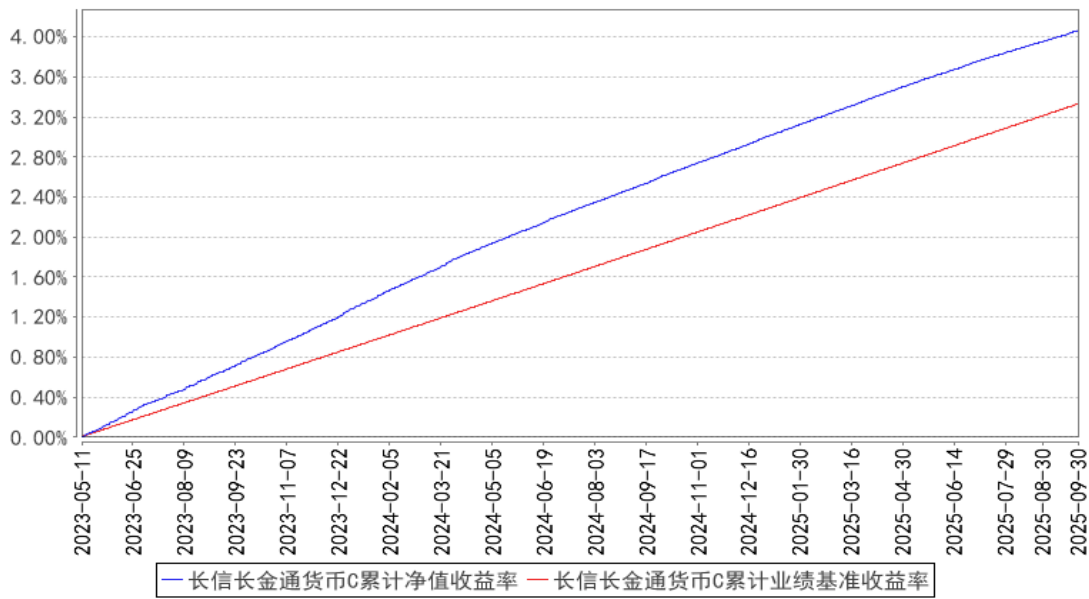
3.2.2



长信长金货币B累计净值收益率与同期业绩比较基准收益率的历史走势对比图



长信长金货币C累计净值收益率与同期业绩比较基准收益率的历史走势对比图



	AAA 7				87	AAA 7
	AAA 7	2024 2 5	-	10	2023 12	AAA 7

1

2

4.2

4.3

4.3.1

4.3.2

5%

4.4

2025

GDP 5.2%

5.5%

0.3

10

6

1.646%

9

1.78%

1

1.58%

1.7%

2025 4

2025

4.5

2025 9 30

A

0.3378%

B

0.3733%

C

0.3123%

D

0.3120%

0.3456%

4.6

\$5

5.1

			%
1		24,699,899,717.02	61.56
		24,699,899,717.02	61.56
		-	-
2		9,327,704,671.42	23.25
		-	-
3		6,098,044,203.18	15.20
4		19,304.38	0.00
5		40,125,667,896.00	100.00

5.2

			%
1			13.68
			-
			%
2		6,544,833,969.27	19.54
		-	-

20%

20%

5.3

5.3.1

		89
		89
		60

120

120

5.3.2

		%	%
1	30	40.46	19.75
	397	2.52	-
2	30 —60	17.91	-
	397	2.36	-

3	60	—90	21.98	-
		397	0.27	-
4	90	—120	5.10	-
		397	-	-
5	120	—397	34.34	-
		397	-	-
			119.77	19.75

5.4

240

240

5.5

			%
1		-	-
2		-	-
3		2,904,754,091.73	8.67
		2,843,068,068.05	8.49
4		66,732,952.49	0.20
5		4,484,132,624.73	13.38
6		-	-
7		17,244,280,048.07	51.47
8		-	-
9		24,699,899,717.02	73.73
10	397	1,725,881,279.21	5.15

5.6

					%
1	09250409	25 09	7,900,000	791,419,582.82	2.36
2	112508141	25 CD141	5,000,000	497,022,830.53	1.48
3	250214	25 14	4,600,000	460,020,825.02	1.37
4	012582287	25 SCP025	4,000,000	400,058,824.53	1.19
5	112515133	25 CD133	4,000,000	398,746,342.13	1.19
6	112510210	25 CD210	4,000,000	396,915,928.99	1.18
7	240214	24 14	3,800,000	384,651,070.84	1.15
8	112505187	25 CD187	3,080,000	305,107,261.20	0.91
9	012580842	25	3,000,000	302,118,568.72	0.90

		SCP001			
10	012582260	25 SCP004	3,000,000	300,112,158.03	0.90

5.7 "

	0.25	-0.5%		0
				0.0303%
				-0.0283%
				0.0123%

0.25%

0.25%

0.5%

0.5%

5.8

5.9

5.9.1

5.9.2

2025 8 1

1020

2025 9 12

550

2024 12 17

2024 43

60

2025 9

12

590

2025 9

12

290

5.9.3

1		18,074.38
2		-
3		-
4		1,230.00
5		-
6		-
7		19,304.38

5.9.4

§6

	A	B	C	D
	367,457,361.85	27,008,887,818.54	743,704.79	11,517.64
	415,865,257.42	136,452,117,461.13	661,133.31	35.90

	478,082,443.01	130,264,981,020.76	604,803.92	-
	305,240,176.26	33,196,024,258.91	800,034.18	11,553.54

§7

§8

8.1

20%

20%

8.2

§9

9.1

1

2

3

4

5

6

9.2

9.3

<https://www.cxfund.com.cn>

2025 10 28