

2025 3

2025 9 30

2025 10 28

§1

2025 10 24

2025 7 1 2025 9 30

§2

	014356
	2022 7 1
	213,339,644.07

	A	C
	014356	014357
	142, 565, 637. 61	70, 774, 006. 46

§3

3.1

	2025 7 1	-2025 9 30
	A	C
1.	6, 777, 519. 11	3, 248, 686. 67
2.	11, 360, 828. 89	5, 506, 656. 56
3.	0. 0725	0. 0697
4.	127, 368, 805. 25	62, 210, 465. 59
5.	0. 8934	0. 8790

1

2

3.2

3.2.1

A

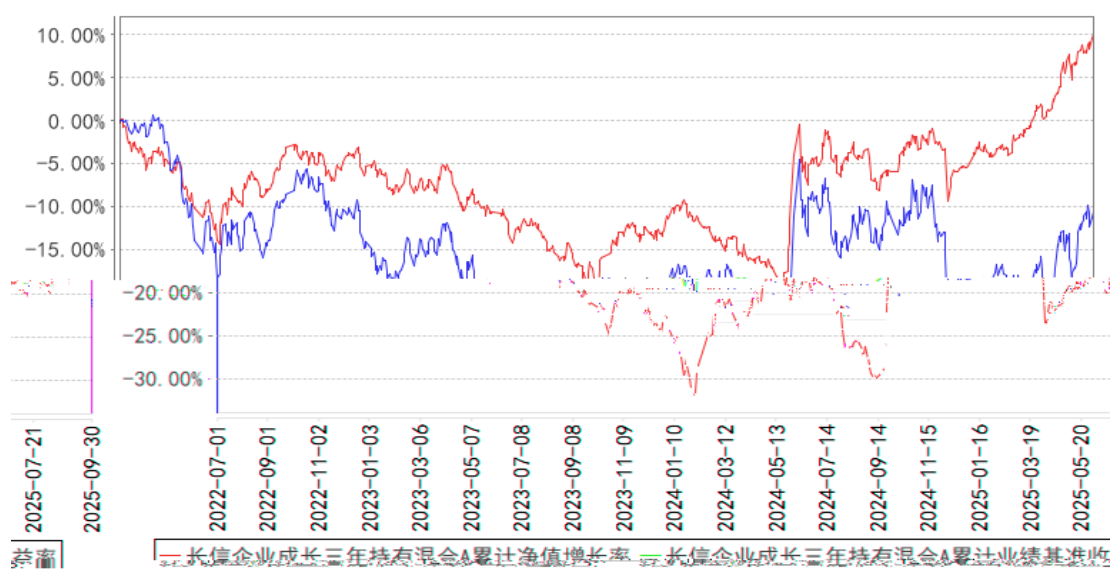
	9. 46%	1. 32%	12. 29%	0. 58%	-2. 83%	0. 74%
	3. 07%	1. 39%	13. 95%	0. 74%	-10. 88%	0. 65%
	0. 46%	1. 52%	14. 64%	0. 85%	-14. 18%	0. 67%
	3. 81%	1. 31%	22. 49%	0. 78%	-18. 68%	0. 53%
	-10. 66%	1. 28%	9. 98%	0. 77%	-20. 64%	0. 51%

C

	9.31%	1.32%	12.29%	0.58%	-2.98%	0.74%
	2.82%	1.39%	13.95%	0.74%	-11.13%	0.65%
	-0.05%	1.52%	14.64%	0.85%	-14.69%	0.67%
	2.27%	1.31%	22.49%	0.78%	-20.22%	0.53%
	-12.10%	1.28%	9.98%	0.77%	-22.08%	0.51%

3.2.2

长信企业成长三年持有混合A累计净值增长率与同期业绩比较基准收益率的历史走势对比图



		2023 1 6	-	11	2016 7

1

2

4.2

4.3

4.3.1

4.3.2

5%

4.4

/ /

1

2

3

4.5

2025 9 30 , A 0.8934 ,
 0.8934 , A 9.46%;
 C 0.8790 , 0.8790 ,
 C 9.31%, 12.29%

4.6

\$5

5.1

			%
1		169,435,159.41	88.99
		169,435,159.41	88.99
2		-	-
3		-	-
		-	-
		-	-

4		-	-
5		-	-
6		-2,181.64	-0.00
		-	-
7		20,941,606.01	11.00
8		29,520.00	0.02
9		190,404,103.78	100.00

19,788,185.98

10.44%

5.2

5.2.1

			%
A		1,700,954.00	0.90
B		-	-
C		94,878,334.43	50.05
D		-	-
E		-	-
F		-	-
G		43,306,939.00	22.84
H		-	-
I		-	-
J		6,317,514.00	3.33
K		-	-
L		3,443,232.00	1.82
M		-	-
N		-	-
O		-	-
P		-	-

	-	-
	-	-
	-	-
	7,219,692.46	3.81
	-	-
	-	-
	-	-
	2,565,610.75	1.35
	19,788,185.98	10.44

5.3

5.3.1

					%
1	603986		88,600	18,898,380.00	9.97
2	600233		803,100	14,736,885.00	7.77
3	002468		773,300	13,842,070.00	7.30
4	601872		1,468,900	13,043,832.00	6.88
5	09988	-W	61,900	10,002,882.77	5.28
6	603699		202,700	9,082,987.00	4.79
7	688630		61,614	8,708,522.76	4.59
8	603308		234,900	7,638,948.00	4.03
9	002311		119,700	7,633,269.00	4.03
10	300803		37,800	6,317,514.00	3.33

5.4

5.5

5.6

5.7

5.8

5.9

5. 9. 1

5. 9. 2

5. 10

5. 10. 1

5. 10. 2

5. 10. 3

5. 11

5. 11. 1

5. 11. 2

5. 11. 3

1		-
2		-
3		29,520.00
4		-
5		-
6		-
7		-

5.11.5

5.11.6

§6

	A	C
	198,111,540.36	101,005,098.40
	24,926.30	62,263.05
:	55,570,829.05	30,293,354.99
" - "	-	-
	142,565,637.61	70,774,006.46

§7

7.1

	A	C
	1,488,095.24	-
/	-	-
/	-	-
	1,488,095.24	-
%	0.70	-

7.2

§8

8.1

20%

20%

8.2

§9

9.1

- 1
- 2
- 3
- 4
- 5
- 6

9.2

9.3

<https://www.cxfund.com.cn>

2025 10 28