

90

2025

3

2025 9 30

2025 10 28

**§1**

2025 10 24

2025 7 1 2025 9 30

**§2**

	90	
	018744	
	2023 7 20	
	479,192,008.56	
	1-3	*80%+
		*20%
	90 A	90 C
	018744	018745
	379,872,803.37	99,319,205.19

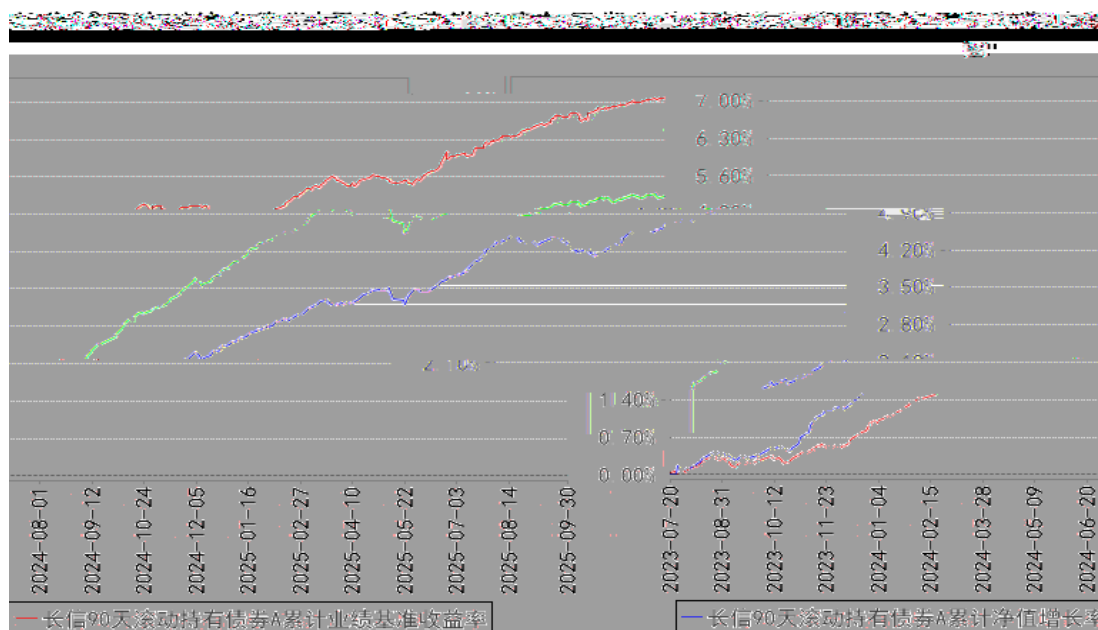
**§3**

## 3.1

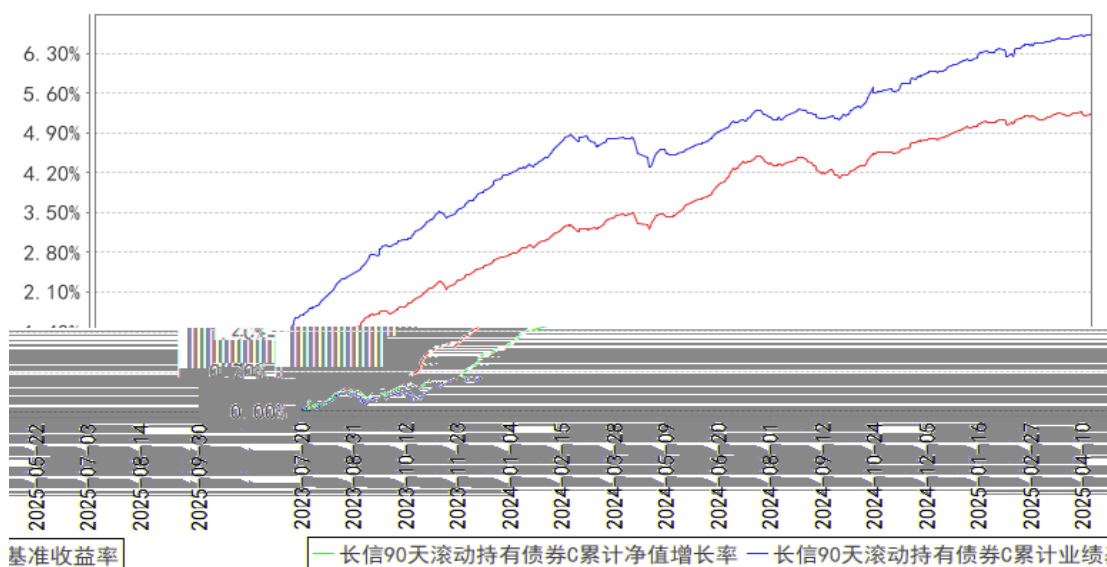
	2025 7 1		-2025 9 30	
	90	A	90	C
1.		2,254,817.51		669,247.82

	0.40%	0.02%	0.21%	0.02%	0.19%	0.00%
	1.19%	0.03%	0.87%	0.02%	0.32%	0.01%
	2.03%	0.03%	1.87%	0.02%	0.16%	0.01%
	6.65%	0.03%	5.24%	0.02%	1.41%	0.01%

3.2.2



长信90天滚动持有债券C累计净值增长率与同期业绩比较基准收益率的历史走势对比图



1 2023 7 20 2025 9

2

6

**\$4**

**4.1**

	30				2014 6
	30				
	90				
	60	2023 7 20	-	11	AAA 7
	120				30
					30
					90
					60
					120
		2023 11 20	-	9	
					2019
	90				6

	60				90	60
	90	2025 4 16	-	14	2017 2	90

1

2

4.2

4.3

4.3.1

4.3.2

5%

4.4

AI

AI

A

2025

2025

4.5

	2025	9	30	90	A	1.0710	
	1.0710			90	A	0.45%	90
C			1.0665		1.0665		90
C		0.40%			0.21%		

4.6

**\$5**

5.1

			%
1		-	-
		-	-
2		-	-
3		513,758,723.30	

3		82,555,886.03	16.10
		-	-
4		35,913,581.10	7.00
5		157,582,852.06	30.73
6		209,491,317.53	40.85
7		-	-
8		-	-
9		-	-
10		513,758,723.30	100.19

## 5.5

					%
1	2028044	20 01	400,000	41,643,951.78	8.12
2	2228057	22 04	400,000	40,911,934.25	7.98
3	019766	25 01	270,000	27,208,743.29	5.31
4	012582368	25 SCP020	250,000	25,006,895.89	4.88
5	102380375	23 MTN002	200,000	20,607,139.73	4.02

## 5.6

## 5.7

## 5.8

## 5.9

## 5.9.1

## 5.9.2

## 5.9.3

5.10

5.10.1

2025 9 12

6670

2024 12 18

2024 236

5.10.2

5.10.3

1		2,713.67
2		-
3		-
4		-

5		165,686.00
6		-
7		-
8		168,399.67

5.10.4

5.10.5

5.10.6

**§6**

	90	A	90	C
	426,217,592.32		151,706,317.31	
	46,723,908.32		10,181,362.45	
:	93,068,697.27		62,568,474.57	
" -"		-		-
	379,872,803.37		99,319,205.19	

**§7**

7.1

7.2

**§8**

8.1

20%

20%

8.2

## §9

### 9.1

1

2 90

3 90

4 90

5

6

### 9.2

### 9.3

<https://www.cxfund.com.cn>

2025 10 28