

A500

2025 4

2025 12 31

**§1**

2026 1 20

2025 10 1 2025 12 31

**§2**

	A500
	022697
	2025 4 29
	144,090,411.13
	8% 0.5%
	A500 × 95%+ ( ) × 5%

	A500	A	A500	C
	022697		022698	
	9,082,698.68		135,007,712.45	

**§3**

**3.1**

	2025 10 1		-2025 12 31	
	A500	A	A500	C
1.	744,195.55		5,129,658.43	
2.	34,196.13		2,991,926.98	
3.	0.0020		0.0223	
4.	11,095,438.87		164,473,719.05	
5.	1.2216		1.2183	

1

2

**3.2**

**3.2.1**

A500 A

	1.33%	0.97%	0.43%	1.00%	0.90%	-0.03%
	20.66%	0.90%	20.71%	0.95%	-0.05%	-0.05%
	22.16%	0.79%	25.85%	0.87%	-3.69%	-0.08%

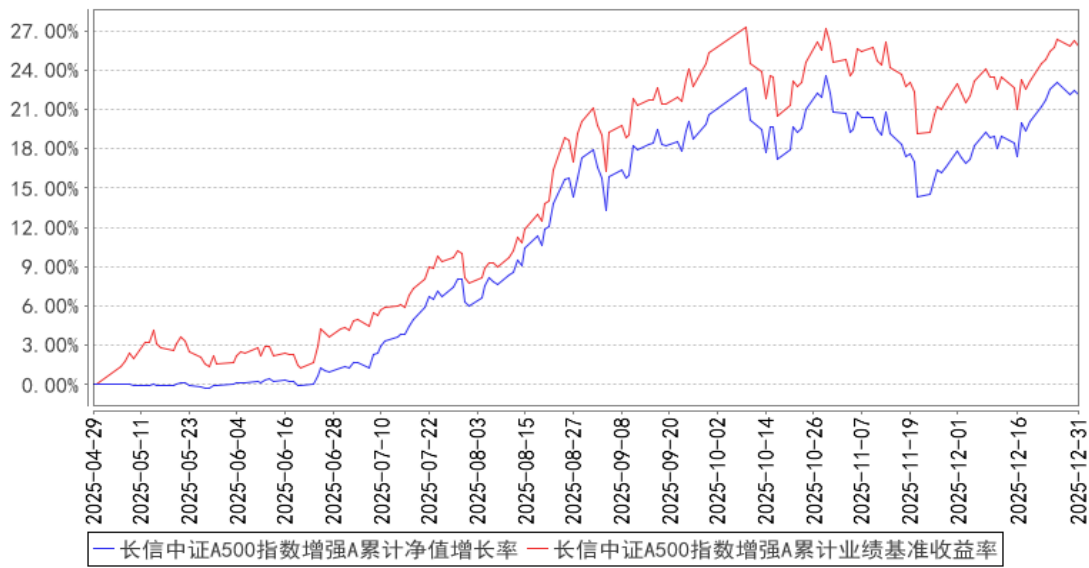
A500 C

--	--	--	--	--	--	--

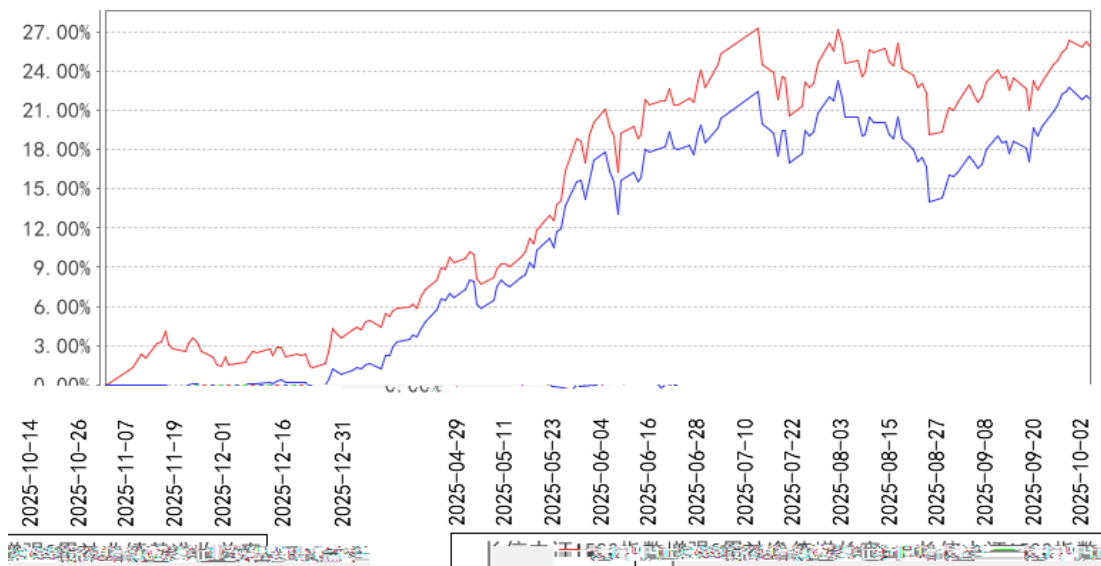
	1.23%	0.97%	0.43%	1.00%	0.80%	-0.03%
	20.42%	0.90%	20.71%	0.95%	-0.29%	-0.05%
	21.83%	0.79%	25.85%	0.87%	-4.02%	-0.08%

3.2.2

长信中证A500指数增强A累计净值增长率与同期业绩比较基准收益率的历史走势对比图



长信中证A500指数增强C累计净值增长率与同期业绩比较基准收益率的历史走势对比图



2025 4 29 2025 12 31

2

6

**§4**

4.1

					2015
	50	2025 4 29	-	10	7
	A500				LOF
	300				50
					A500
					300

1

2

4.2

4.3

4.3.1

4.3.2

5%

4.4

2025 A

" "

Al pha

4.5

	2025	12	31	A500	A	1.2216	
	1.2216			A500	A	1.33%	A500
C			1.2183		1.2183		A500
C		1.23%			0.43%		

4.6

**\$5**

### 5.1

			%
1		163,763,328.68	92.15
		163,763,328.68	92.15
2		-	-
3		-	-
		-	-
		-	-
4		-	-
5		-	-
6		-	-
		-	-
7		13,702,158.07	7.71
8		246,695.16	0.14
9		177,712,181.91	100.00

### 5.2

#### 5.2.1

			(%)
A		-	-
B		13,459,555.00	7.67
C		81,801,865.28	46.59
D		2,093,313.00	1.19
E		2,778,591.00	1.58
F		1,515,155.00	0.86
G		2,596,757.00	1.48
H		-	-
I		6,673,035.00	3.80
J		19,077,580.00	10.87
K		-	-
L		3,226,085.00	1.84
M		4,298,854.00	2.45

N		-	-
O		-	-
P		-	-
Q		219.60	0.00
R		-	-
S		-	-
		137,521,009.88	78.33

5.2.2

			(%)
A		-	-
B		-	-
C		21,347,481.40	12.16
D		634,464.48	0.36
E		-	-
F		10,972.92	0.01
G		-	-
H		-	-
I		969,438.00	0.55
J		2,702,636.00	1.54
K		-	-
L		34,860.00	0.02
M		240,572.00	0.14
O		-	-
P		15,274.00	0.01
Q		-	-
R		285,120.00	0.16
S		-	-
		26,242,318.80	14.95

5.2.3

-

---

3	300308		8,300	5,063,000.00	2.88
4	601899		140,200	4,832,694.00	2.75
5	600519		3,500	4,820,130.00	2.75
6	000333		46,800	3,657,420.00	2.08
7	601166		159,500	3,359,070.00	1.91

5. 10

5. 10. 1

5. 10. 2

5. 10. 3

5. 11

5. 11. 1

2025 12 5

720

5. 11. 2

5. 11. 3

1		-
2		-

3		-
4		-
5		246,695.16
6		-
7		-
8		246,695.16

5.11.4

5.11.5

5.11.5.1

5.11.5.2

5.11.6

**§6**

	A500	A	A500	C
	19,211,088.01		88,284,472.11	
	1,776,305.52		149,521,852.02	
:	11,904,694.85		102,798,611.68	
" _"		-		-
	9,082,698.68		135,007,712.45	

**§7**

7.1

7.2

**§8**

8.1

20%

20%

8.2

**§9**

9.1

1

2

A500

3

A500

4

A500

5

6

9.2

9.3

<https://www.cxfund.com.cn>

2026 1 22