

2017 1

2015 11 30

2015 2772

2016 3 9

重要提示

2016 12 31

2017 3 9

		5149.5	31.21%
		2500.5	15.15%
		751	4.55%
		749	4.54%
		16500	100%

1

			IMBA
			,
			/
			EMBA
			EMBA

3

			EMBA
			2001
			CIM
			LOF
			Investors Group Financial Services Co. Ltd 2002

--	--	--	--

4

--	--	--	--

				(LOF)	
				FOF	
					LOF
1					
2	2017	3	18		
3	2017	3	29		
4	2017	4	14		LOF
5	2017	4	22		
			LOF		
6					

1

55

1984 1 1

35,640,625.71

010-66105799

2

2016 9

210

30 95%

3

1998

QFII

QDII

QDII

ESCROW

2016 9

624

2003

51

2005 2007 2009 2010 2011 2012 2013 2014

SAS70

70

2015

ISAE3402

SAS70

1

2

3

1

2

3

4

5

6

4

1

2

3

4

5

6

7

5

1



0755-22166118	0755-25841098
---------------	---------------

010-84183389	010-84183311-3389
400-818-8118	www.guodu.com
10	
95	
95	
028-86690057 028-86690058	028-86690126
95310	www.gjzq.com.cn
11	
88	
88	
0791-86283080	0791-86288690
4008-222-111	www.gsstock.com
12	
618	
168	29
95521	021-38670666
4008888666	www.gtja.com
13	
100	57
100	57
021-68777222	021-68777822
400-820-9898	www.cnhbstock.com
14	
638	21
638	
0931-4890208	0931-4890628
4006898888	www.hlzqgs.com.cn
15	
8	
8	518048
0755-22626391	0755-82400862

95511 8	www.stock.pingan.com
16	
86	
86	
0531-68889155	0531-68889752
95538	www.qlzq.com.cn
17	
336	
336	
021-53519888	021-53519888
4008918918 021-962518	www.962518.com
18	
989 45	
989 40	
021-33389888	021-33388224
95523 4008895523	www.swhysc.com
19	
268	
1199 . 1 21	
021-38565785	
400-8888-123	www.xyzq.com.cn
20	
38-45	
38-45	
0755-82960223	0755-82943121
95565 400-8888-111	www.newone.com.cn
21	
35 2-6	
35 C	
010-66568292	010-66568990
4008-888-888	www.chinastock.com.cn

22				
		66	4	
:		188		
010-85130588		010-65182261		
400-8888-108		www.csc108.com		
23				
		8		
		48		
010-60838888		010-60833739		
95558		www.citics.com		
24				
		222	1	20 266061)
		222	1	20 266061
0532-85022326		0532-85022605		
95548		www.citicsd.com		
25				
		6009	29	
		6009	29	
0755-83734659		0755-82960582		
4001022011		www.zszq.com.cn		
26				
		9	1	
		9	1	
010-63081000		010-63080978		
95321		www.cindasc.com		
27				
		8		
		8		
023-63786633		023-63786212		
4008096096		www.swsc.com.cn		

28			
	1218	1	202
	B	6	

100	19
100	19

1		12 B1201-1203	
020-89629012		020-89629011	
020-89629066		www.yingmi.cn	
41			
11		11 1108	
11		11 1108	
010-56282140		010-62680827	
400-619-9059		www.hcjijin.com	
42			
1		A 201	
A		36 37	
0755-89462447		0755-86700688	
400-999-8877		www.webank.com	
3			
http://www.sse.com.cn			

	17	256 1405	1 2 8
	17	256 1405	1266 50
	010-59378856	021-51150298	021-22122888
	010-59378907	021-51150398	021-62881889

80%

5%

1

1

5

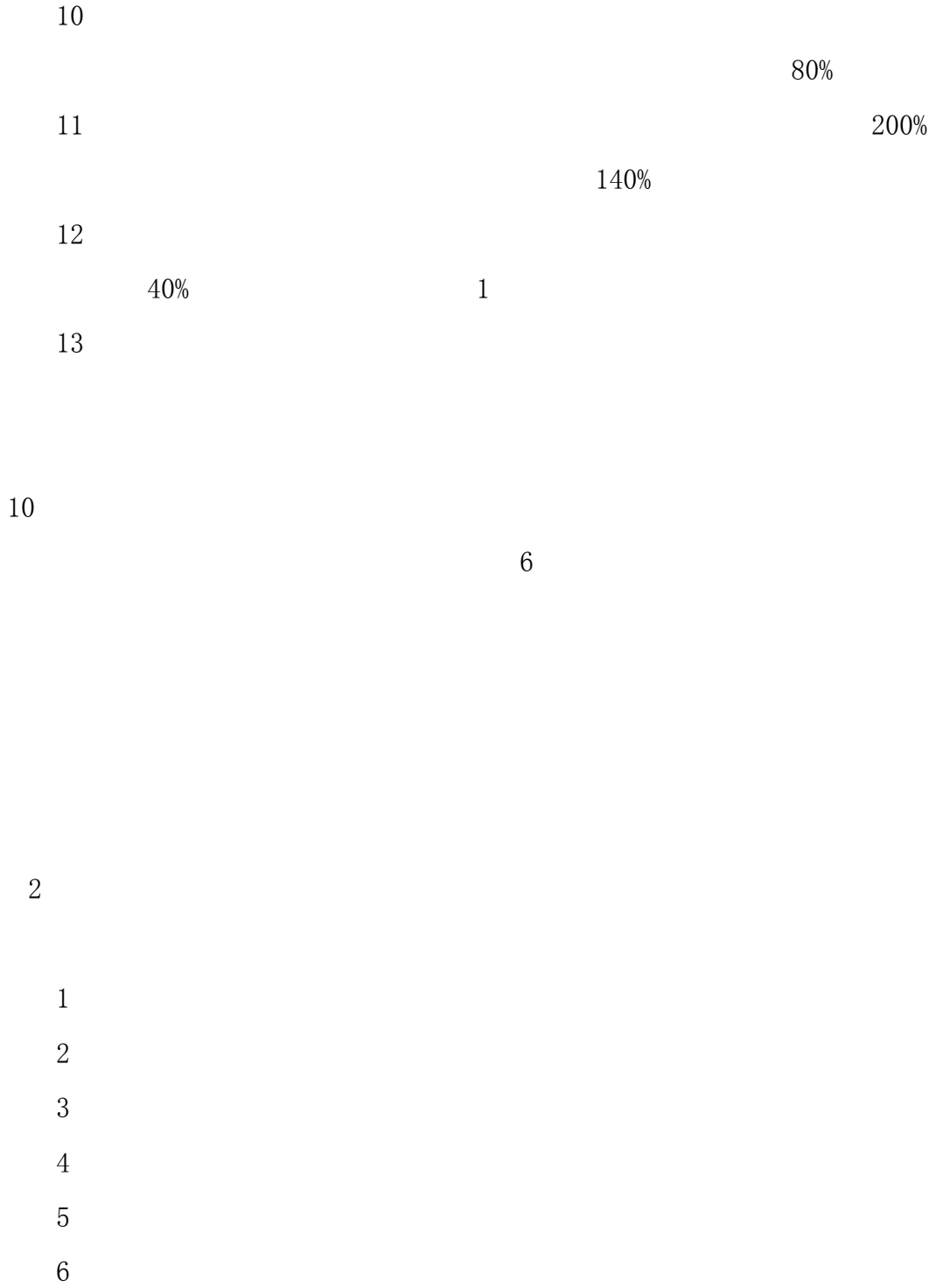
6

7

8

2





2017 3

2016 12 31

2016

			%
1		-	-
		-	-
2		-	-
3		1,796,894,540.10	95.62
		1,796,894,540.10	95.62
		-	-
4		-	-
5		-	-
6		16,100,000.00	0.86
		-	-
7		12,655,705.44	0.67
8		53,539,033.00	2.85
9		1,879,189,278.54	100.00

1

2

1		16,851,811.50	0.90
2		-	-
3		60,026,000.00	3.22
		60,026,000.00	3.22

4		1,699,974,728.60	91.07
5		20,042,000.00	1.07
6		-	-
7		-	-
8		-	-
9		-	-
10		1,796,894,540.10	96.26

	债券代码	债券名称			
1	1480102	14	600,000	64,440,000.00	3.45
2	1480329	14	600,000	63,774,000.00	3.42
3	1580073	15	600,000	63,594,000.00	3.41
4	1380196	13	600,000	62,214,000.00	3.33
5	1480583	14	600,000	62,028,000.00	3.32

1

2

3

2

3

1		39,401.82
2		-
3		-
4		53,499,631.18
5		-
6		-
7		-
8		-
9		53,539,033.00

4

5

A

2016 3 9	0.84%	0.02%	0.94%	0.05%	-0.10%	-0.03%
2016 6 30						
2016 7 1 2016 9 30	1.79%	0.04%	1.96%	0.04%	-0.17%	0.00%
2016 10 1 2016 12 31	-1.84%	0.13%	-1.41%	0.12%	-0.43%	0.01%

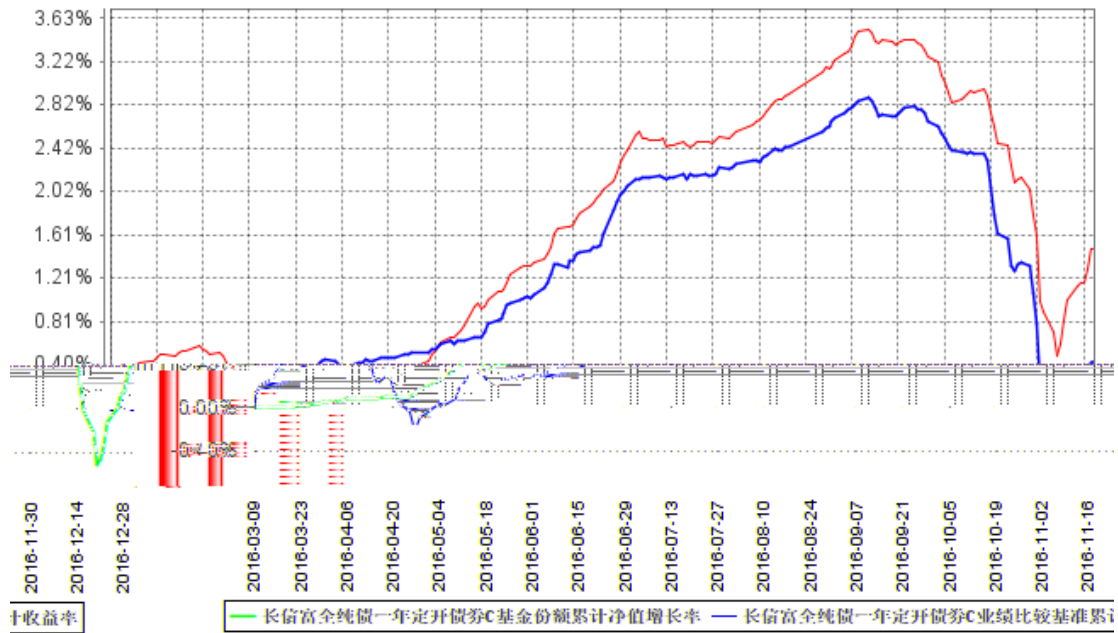
C

2016 3 9	0.71%	0.02%	0.94%	0.05%	-0.23%	-0.03%

2016

6 30

C



1

2016 3 9

2016 3 9 2016 12 31

2

6

1

1

2

3

4

5

6

7

8

9

10

2

1

0.7%

H

H

E

2

2

2

0.2%

H

H

E

2

2

3

A

C

0.4%

C

0.4%

H

H C

E C

2

2

4 10

3

1

2

3

4

4

5

1

A

C

	M	
A	M 100	0.6%
	100 M 500	0.3%
	M 500	1000
C	0	

M

2

A

C

	N	
A	N 2	0.05%
	N 2	0
C	0	

N

25%

3

[2009]32

1

(-)

1

2

3

6

7

8

9

10

