

.....	5
.....	6
.....	12
.....	24
.....	31
.....	47
.....	48
.....	49
.....	63
.....	70
.....	75
.....	77
.....	78
.....	84
.....	87
.....	89
.....	90
.....	97
.....	101
.....	107
.....	109
.....	138
.....	154
.....	157
.....	159
.....	160

1			60	
2				
3				
4			60	
5				60
6				60
7			60	60
8				
9		2003 10 10	28	
		2012 12		

13	2017 8 31
10 1	
14	
15	/
16	
17	
18	
19	
21	
22	
23	
24	
25	

26

27

28

29

30

3

31

32

33 T

34 $T+n$ T n (T) n

35

36

37

38

60

120

39

40

41

42

43

44

45

46

(

)

10%

47

48

49

50

51

52

53

54 A

/

A

9

55 C

/

C

56

57

58

10

59

60

61

62

63

64

65

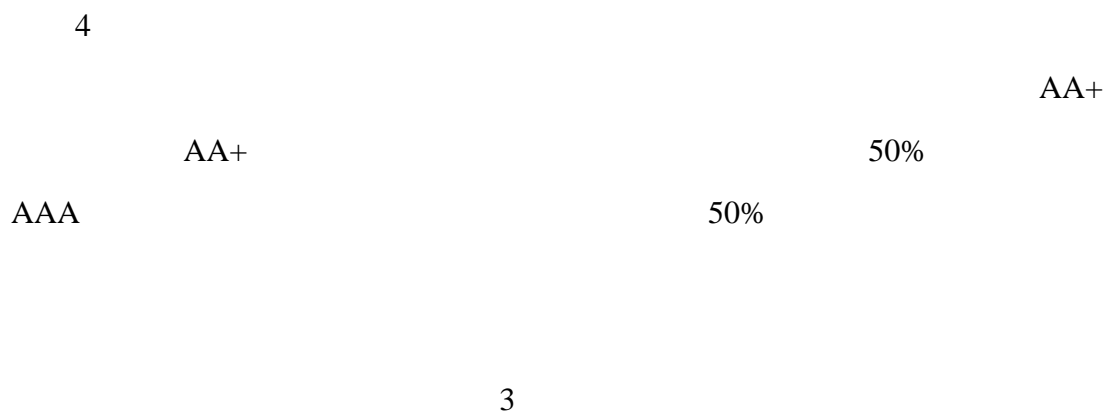
66

67

\div

/

/

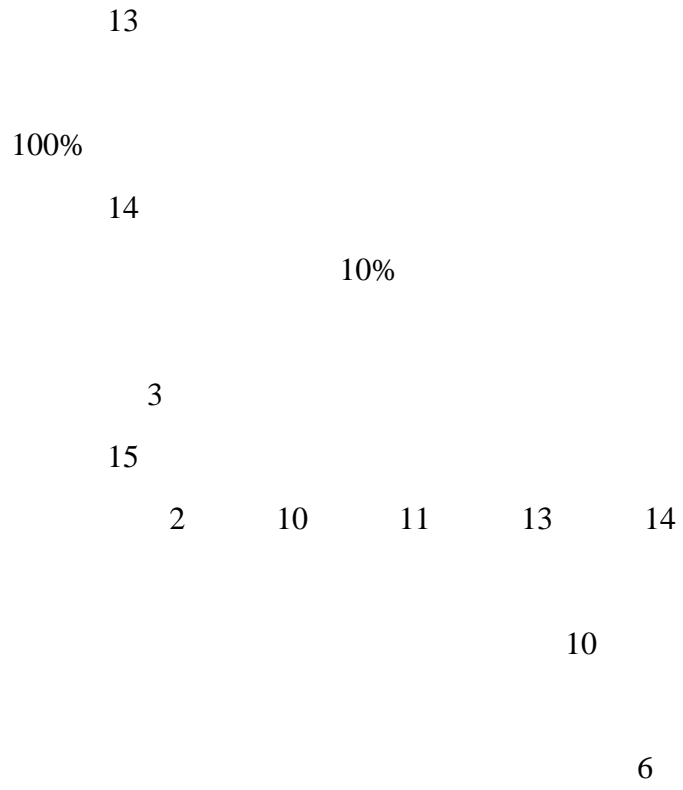


1

2

3

1		80%
2		
3		10%
4		
10%		
5		
	10%	
6		20%
7	()	
	10%	
8		
		10%
9		140%
10		
15%		
11		

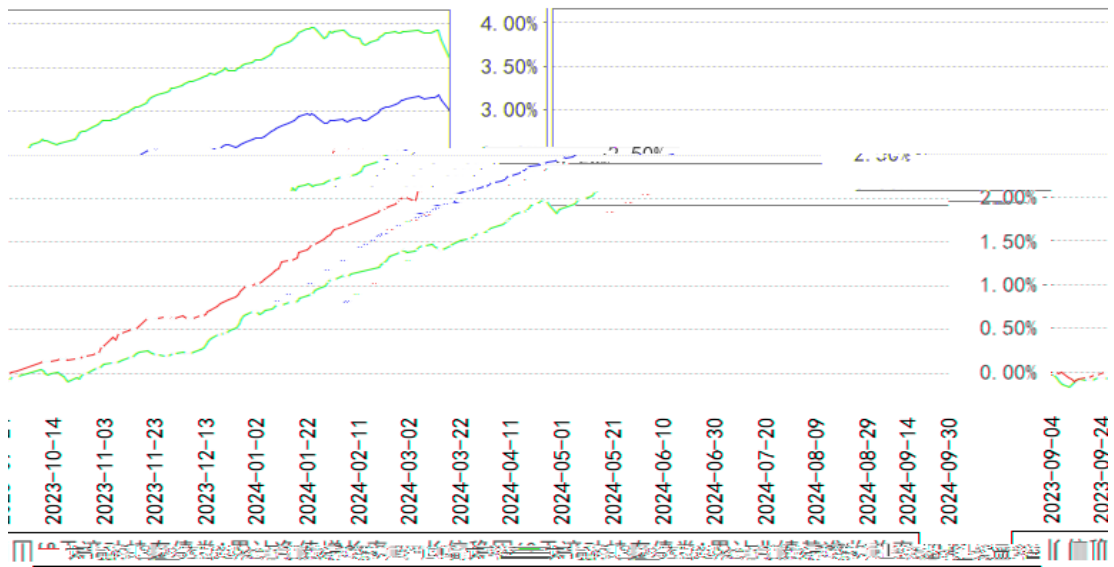


1-3 *80%+
*20%
1-3
1-3

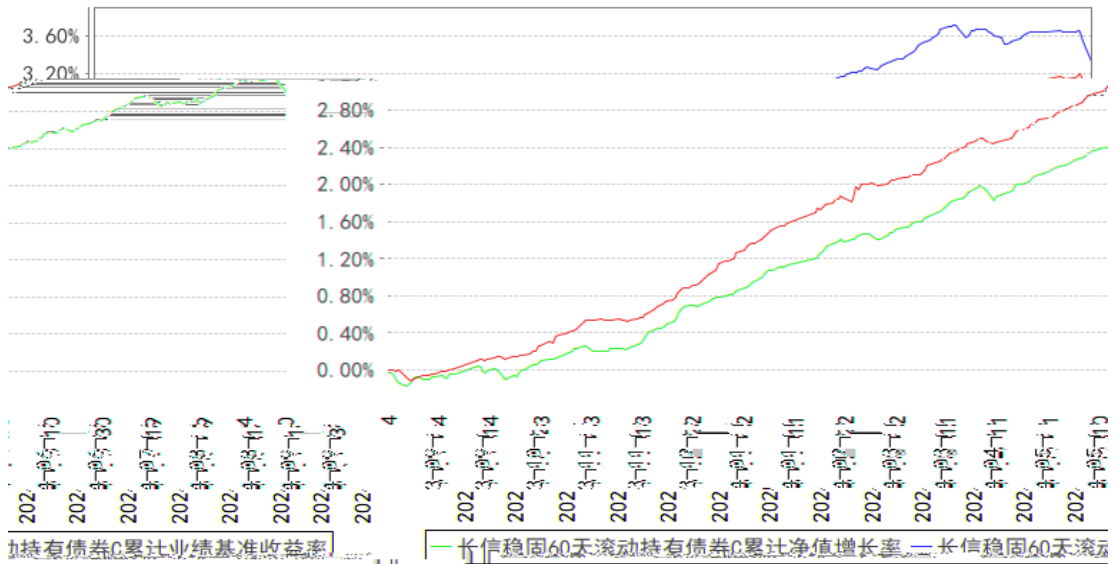


--	--	--	--	--	--	--

长信稳固60天滚动持有债券A累计净值增长率与同期业绩比较基准收益率的历史走势图



长信稳固60天滚动持有债券C累计净值增长率与同期业绩比较基准收益率的历史走势图



1

2

3

0.25%

1

1

2

3

2

3

4

5

1

2

3

4

4

/

1

4

2

/

1

2

3

4

5

6

7 /

8

9

10

1

0.2%

H $E \times 0.2\% \div$

H

E

5

2

0.05%

H $E \times 0.05\% \div$

H

E

5

3

A

C

0.2%

C

0.2%

H $E \times 0.2\% \div$

H C

E C

5

4 10

1

3

2

3

4

A

C

5

6

1

2

1 1 12 31

2

3

4

5

6

7

1

2

3

- 1
- 2
- 3
- 4
- 5
- 6

12

12

/

10 11 13 14

4

9	140%
10	
15%	
11	
13	
100%	
14	
	10%
3	
15	

