

2017

6 5

2017 828

2018 3 7

)

(

2024 9 30

2025 4 9

2024 11 30

.....	5
.....	6
.....	12
.....	20
.....	29
.....	50
.....	51
.....	52
.....	66
.....	76
.....	80
.....	82
.....	83
.....	89
.....	92
.....	94
.....	95
.....	103
.....	100
.....	114
.....	116
.....	145
.....	165
.....	168
.....	172
.....	173

(

1

2

3

4

5

6

7

8

9

2003 10 28
2012 12 28
2013 6 1 2015 4 24

<

>

10

2013 3 15 6 1

11

2019 7 26 9 1

12

2014 7 7 8 8

26

27

28

29

30

31

3

32

33

34 T

35 $T+n$ T n (T) n

36

37

38

39

40

41

42

43

44

45

46

47

(

)

10%

48

49

50

51

52

53

54

:

55 A A

56 C C

57

58

59

60

10

61

62

63 1

2

3

			(HK1278) , () ;2021 7 -2024 7 , ()
			EMBA 2002

2

			EMBA
			2001

4

		2022 1 28	2015 7 2022 1 2022 1 1 LOF 50 2022 1 2023 2023 1
		2018 3 7 2022 1 28	
		2025 4 9	2015 7 2025 2025 4 2025 4

			LOF

5

			6
	87	AAA	7
			100
	50		1000
		500	300
		180 (LOF)	180

1

2

3

4

5

6

7

8

9

10

11

12

13

14

15

16

15

17

18

19

20

21

22

23

24

30

25

26

27

1

2

1

2

3

4

5

6

7

8

3

1

2

3

4

1

1

2

3

4

2

1

2

3

4

5

6

7

8

9

10

11

3

1

2

3

4

5

4

5

1

2

3

4

5

6

7

8

6

1

2

3

4

5

6

7

7

8

1

2

55

1984 1 1

35,640,625.7089

010-66105799

2024 9

211

38

99%

1998

QFI

QDII

QDII

ESCROW

2024 9

1428

2003

102

COSO

2005

ISAE3402

1.

1

2

3

4

5

2.

1

2

3

4

5

6

3.

1

2

3

4

4.

5.

6.

AB

+

+

+

+

+

+

A

1	1					
				68	37	
			68	9	37	38
			021-61009916		021-61009917	
			400-700-5566		www.cxfund.com.cn	
2	1					
				55		
				55		
			010-66105662			
			95588		www.icbc.com.cn	
2	2					
				7088		
				7088		
			0755-83198888		0755-83195109	
			95555		www.cmbchina.com	
3	3					
				12		
				12		
			021-61618888		021-63604199	
			95528		www.spdb.com.cn	
4	4					
				398		
				167		
			0591-87839338		0591-87841932	
			95561		www.cib.com.cn	
5						

	46	
	46	
	0571-85108195	0571-85106576
	95398 400-8888-508	www.hzbank.com.cn
6	1099	
	1099	
	0755-22166118	0755-25841098
	95511-3	bank.pingan.com
7	26	
	26	
	025-58587036	025-58587820
	95319	www.jsbchina.cn
8	345	
	345	
	021-23262712	021-63586853
	95574	www.nccb.com.cn
9	119	
	119	
	0755-82558305	0755-28558355
	95517	http://www.essence.com.cn/
10	88	
	88	
	027-65799999	027-85481900
	95579 4008-888-999	www.95579.com
11	115	
	20	

	115	18	
	0755-23838750	0755-25831754	
	95358	www.firstcapital.com.cn	
12	5		
	5		
	0512-62938521	0512-65588021	
	400 860 1555	www.dwjq.com.cn	
13	1508		
	1508		
	021-22169999	021-22169134	
	95525	www.ebscn.com	
14	5	19	20
	5	19	20
	020-88836999	020-88836654	

	0510-82831662	0510-82830162
	95570	www.glsc.com.cn
18	618	
	768	
	021-38676666	021-38670666
	95521/4008888666	www.gtja.com
19	1012	16-26
	125	19
	0755-81981259	0755-82133952
	95536	www.guosen.com.cn
20	98	
	689	
	021-23219000	021-23219100
	400-8888-001 95553	www.htsec.com
21	100	57
	100	57
	021-68777222	021-68777822
	400-820-9898	www.cnhbstock.com
22	638	21
	638	19
	0931-4890208	0931-4890628
	95368 4006898888	www.hlzq.com
23	56	
	56	

	0451-82336863	0451-82287211
	400-666-2288	www.jhzq.com.cn
	5033	61 -64

	010-66045678	www.txsec.com
30	268	
	36	
	021-38565547	
	95562	www.xyzq.com.cn
31		
	111	
	38-45	
	0755-82943666	0755-82943121
95565 0755-95565	www.cmschina.com	
32	8 1 7 18 101	
	8 1	

	021-20691832	021-20691861
	400-820-2899	www.erichfund.com
42	360 9 3724	
	1687 2	
	021-38602377	021-38509777
	400-821-5399	www.noafund.com
43	685 37 4 449	
	1118 903-906	
	021-20613988	021-68596916
	4007009665	www.ehowbuy.com
44	22 1002	
	22 10	
	010-85657353	010-65884788
	400-920-0022	www.licaike.hexun.com
45	190 2 2	
	88	
	021-54509998	021-64385308
	400-1818-188	fund.eastmoney.com
46	1 903	
	18 4	
	952555	0571-86800423
	952555	www.5ifund.com

	021-34013999	www.hotjijin.com
48	1333 14 09	
	1088	7
	021-20665952	021-22066653
	4008219031	www.lufunds.com
49	900 15 526	
	188	
	021-52822063	021-52975270
	400-118-1188	www.66liantai.com
50	8 402	
	8 4	
	021-80133597	021-80133413
	4008081016	www.fundhaiyin.com
51	5475 1033	
	1098	18
	18516109631	86-021-61101630
	400-032-5885	www.leadfund.com.cn
52	3000 2719	
	688	33
	020-89629099	020-89629011
	020-89629066	www.yingmi.cn
53	11 E A 11 1108	
	11 E A 11	
	010-56282140	010-62680827
	400-619-9059	www.hcfunds.com

54		
	8	53 5312-15
	21	C 11
	021-38789658	021-68880023
	400-600-8800	www.jsfund.cn
55		
	34 6 15 1501	
	34	C 17
	010-57319532	
	400-1599-288	www.danjuanfunds.com
56		
	1800 2 6153	
	488	1503
	021-65370077255	021-55085991
	400-820-5369	www.jiyufund.com.cn
57		
	1	B 5
	1	B 5
	029-88447611	029-88447611
	95325 400-860-8866	www.kysec.cn
58		
	1 A 201	
	0755-8601338877386	
	4000-890-555 95017 1 8	www.tenganxinxi.com www.txfund.com
59		
	47	
	105	1413

	025-66046166	025-53086966
810		
	025-66046166 849	www.huilinbd.com
60	4018	28 A01 B01 b
	8	
	021-54967552	021-54967293
	95323	www.cfsc.com.cn
61	16	
	16	
	010-63631752	010-6622276
	95519	www.echinalife.com
62	666 H	6 A31
	707	32
	15626219801	021-50206001
	021-50206003	www.msftec.com
63	9	1101
	399 1 1	B 12
	13910181936	
	400-080-3388	www.puyifund.com

4 2 1 A2112

64

	4006773333	www.jhjzfund.com
66	10	4 1 103
	10	4
	010-59403028	:010-59403027
	95055 4	www.baiyingfund.com
67	01.02.03.05.11.12.13.15.16.18.19.20.21.22.23	A 18-21 04
	6003	A 18-21
	95532	
	www.ciccw.com	
68		12 17 157
	11 18	A 15
	4000988511	010-89189566
	https://kenterui.jd.com/	
69		10
	88	
	95357	021-23586860
	http://www.18.cn	
70		33 11 B
	1500	
	021-50712782	
	400-799-1888	www.520fund.com.cn
71	1	
	1	22
	0769 22115712	0769 22115712
	95328	www.dgzq.com.cn

C

1	1			
			68	37
			68	9 37 38
	021-61009916		021-61009917	
	400-700-5566		www.cxfund.com.cn	
1	2			
	55			
	55			
	010-66105662			
95588		www.icbc.com.cn		
2				
	398			
	167			

6	88	
	88	
	027-65799999	027-85481900
	95579 4008-888-999	www.95579.com
7	115 20	
	115 18	
	0755-23838750	0755-25831754
	95358	www.firstcapital.com.cn
8	95	
	95	
	028-86690057 028-86690058	028-86690126
	95310	www.gjq.com.cn
9	1012 16-26	
	125 19	
	0755-81981259	0755-82133952
	95536	www.guosen.com.cn
10	98	
	689	
	021-23219000	021-23219100
	400-8888-001 95553	www.htsec.com
11	100 57	
	100 57	
	021-68777222	021-68777822
	400-820-9898	www.cnhbstock.com

18		
	526 2 220	
	1267 11	
	021-20691832	021-20691861
	400-820-2899	www.erichfund.com
19		
	685 37 4 449	
	1118 903-906	
	021-20613988	021-68596916
	4007009665	www.ehowbuy.com
20		
	190 2 2	
	88	
	021-54509998	021-64385308
	400-1818-188	fund.eastmoney.com
21		
	900 15 526	
	188	
	021-52822063	021-52975270
	400-118-1188	www.66liantai.com
22		
	8 402	
	8 4	
	021-80133597	021-80133413
	4008081016	www.fundhaiyin.com
23		
	5475 1033	
	1098 18	
	18516109631	86-021-61101630
	400-032-5885	www.leadfund.com.cn
24		

		3000 2719	
		688	33
		020-89629099	020-89629011
		020-89629066	www.yingmi.cn
		1800 2 6153	
25		488	1503
		021-65370077255	021-55085991
		400-820-5369	www.jiyufund.com.cn
		1 A 201	
26			
		0755-8601338877386	
		4000-890-555 95017 1 8	www.tenganxinxi.com www.txfund.com
		10 4 1 103	
27		10	4
		010-59403028	:010-59403027
		95055 4	www.baiyingfund.com
			A 18-21 04
28		01.02.03.05.11.12.13.15.16.18.19.20.21.22.23	
		6003	A 18-21
		95532	
		www.ciccwm.com	
		12 17 157	
29		11 18	A 15
		4000988511	010-89189566
		https://kenterui.jd.com/	

30		
	10	
	88	
	95357	021-23586860
	http://www.18.cn	
31		
	33 11 B	
	1500	
	021-50712782	
	400-799-1888	www.520fund.com.cn
32		
	1	
	1	22

	92 -4 24 10 1012	
	118 1206	
	18201874972	
	4000048821	www.taixincf.com
37	389	
	389	
	025-58519529	
	95386	www.njzq.com.cn
38	() 428 1 1102	
	428 1 1102	
	021-20219988	
	021-20292031	https://www.wg.com.cn/

	A	A C		
	17	68 37	256 1405	222 30
	17	9 37 68 38	256 1405	222 30
	010-59378856	021-61009999	021-51150298	021-61418888
	010-59378907	021-61009800	021-51150398	021-61411909

3 7

2018

20 200

5000

60

1

/

/

2

3

3

2018 3 19

1

2

3

4

5

1

(T)

T

T+1

T+2 ()

6

7

1

A C

A

C

A

1

2

3

4

5

6

7

8

9

10

	M			
	M 100		1.5%	0.075%
A	100	500	1.0%	0.05%
			1000	

5

6

1

2

2

3

1 A

A

$$= \quad / \quad 1 \quad = \quad -$$

$$= \quad - \quad =$$

$$= \quad /$$

2 C

$$= \quad / \quad C$$

1

5

$$=50,000/(1+1.5\%)=49,261.08$$

$$=50,000 - 49,261.08=738.92$$

$$49,261.08/1.0520$$

$$=46,826.12$$

46,826

4

2 10 A 2
0% A 1.2000

120,000

120,000 0 120,000

10 A 2 A

1.2000 120,000

5

÷

A C

4 5

T

1

2

3 /

4

5

50%

50%

6

7

50%

8

1 2 3 6 7 8

1

2

3

4

5

6

50%

7

1 2 3 5 6 7

4

1

(

)

10%

2

1

2

10%

20%

20%

1

2

3

2

()

20

3

3

1

2

A

A

004805

A B

A

519999 B

519998 ()

A

A

519997

A

A

004925

519993

A

A

519995

A

A

519985			C	C	519989		
	A	A	519991			A	A
	519983			A	A	519979	
	A	A	519967			A	A
	519965				A	A	
519959					A	A	519947
		A	A	519951			C
C	007863			A	A	519937	
				A	A	519929	
		A	A	519949		A	
A	004885		500	A	A	004945	
	()				
				A	A	004805	
				C	C	013152	
		A B	A	005134	B	005135	
	300					C	
C	007293			E	E	007294	
		A	A	003349			
		C	C	004220			
			C	C	004221		
	A	A	005991		E	E	
004651				C	C	004858	
				E	E	006396	
		E	E	006397			A B
	A	519999	B	519998			
		C	C	008176			E
	E	008071					

	6			30				
							C	C
	013151		500	C	C		013881	
		C	C		013153			LOF
	C	C	013154			C	C	
013488			C	C		013558		
	C	C	014572				C	C
	015039							
				30				
			50					
	1000						90	
		60						
					AAA	7		
120							180	

(-)

2

)

(1.00)

3

(1.00

()

80%95%

80%

3%

5%

1

2

1

2

3

2

1

PEG

*

2

PE

PB

PCF

PS

P/E

EV/EBIT

Franchise P/E

3

4

3

4

5

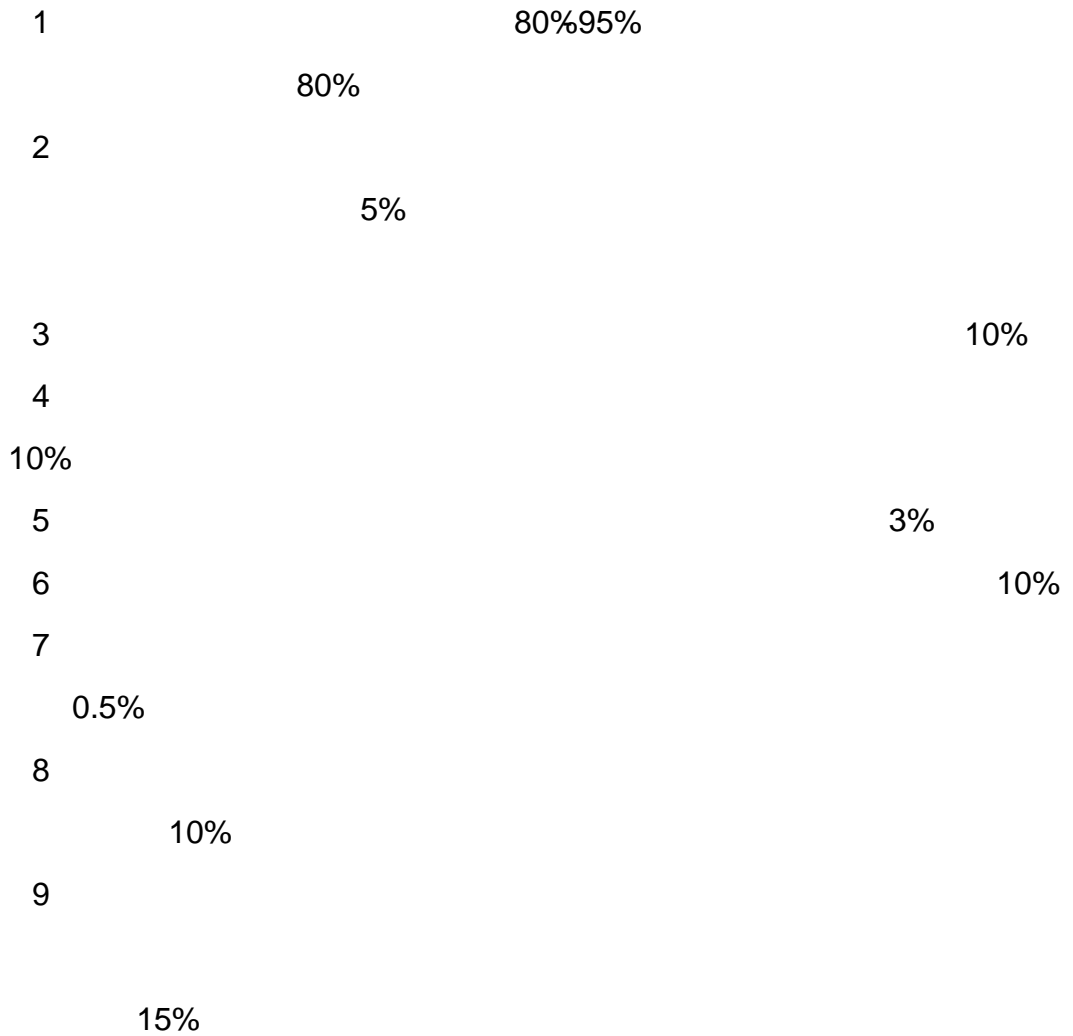
4

1

2

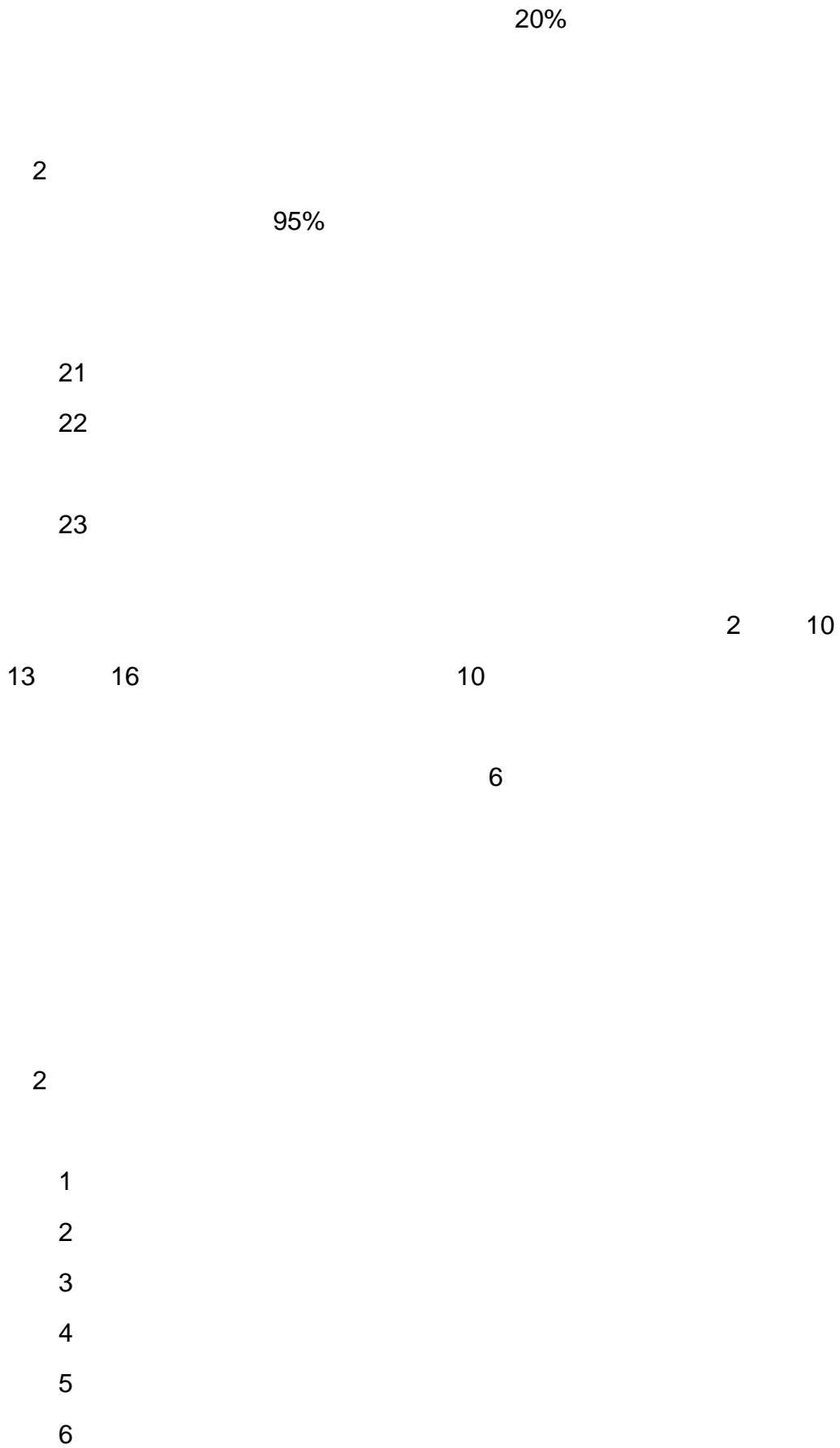
3

1



30%

10



800

800

1

2

3

4

2024 12

2024 9 30

2024

			%
1		17,743,299.89	87.92
		17,743,299.89	87.92
2		-	-
3		-	-
		-	-
		-	-
4		-	-
5		-	-
6		-	-
		-	-
7		1,148,241.45	5.69
8		1,290,038.02	6.39
9		20,181,579.36	100.00

1

			%
--	--	--	---

A		368,010.00	1.85
B		-	-
C		17,374,897.19	87.33
D		392.70	0.00
E		-	-
F		-	-
G		-	-
H		-	-
I		-	-
J		-	-
K		-	-

1

2

1

2

3

1

2

3

1		2,100.47
2		126,198.87
3		-
4		-
5		1,161,738.68
6		-
7		-
8		1,290,038.02

4

5

6

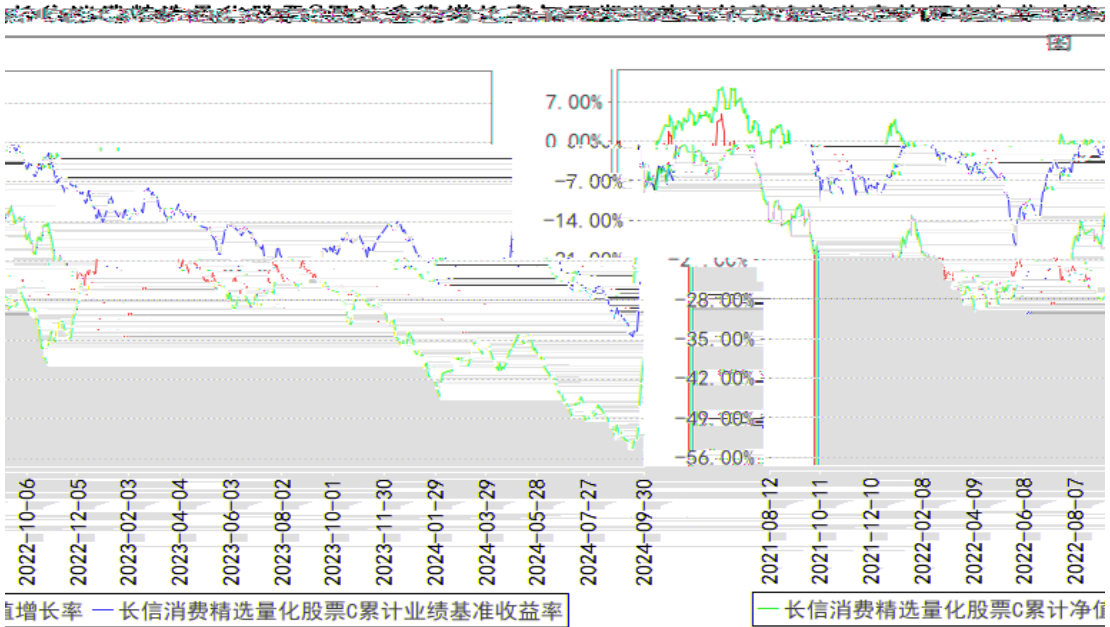
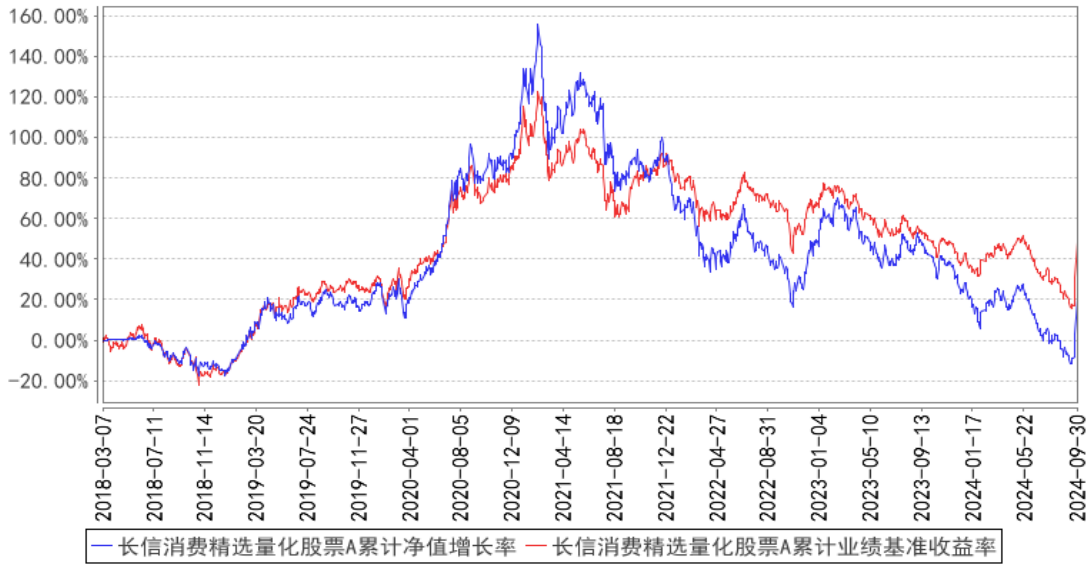
A

2018 3 7							
-2018 12 31	-14.68%	1.10%	-15.61%	1.50%	0.93%	-0.40%	
2019	43.11%	1.30%	51.14%	1.22%	-8.03%	0.08%	
2020	75.93%	1.60%	54.83%	1.38%	21.10%	0.22%	
2021	-15.22%	1.94%	-4.95%	1.47%	-10.27%	0.47%	
2022	-18.33%	1.87%	-10.73%	1.24%	-7.60%	0.63%	
2023	-13.56%	1.30%	-14.70%	0.87%	1.14%	0.43%	
2024 1 1 - 2024 6 30	-18.83%	1.48%	-7.08%	0.92%	-11.75%	0.56%	
2024 7 1 - 2024 9 30	15.38%	2.38%	11.85%	1.80%	3.53%	0.58%	

C

2021 8 12							
2021 12 31	-4.79%	1.68%	6.85%	1.30%	-11.64%	0.38%	
2022	-18.68%	1.87%	-10.73%	1.24%	-7.95%	0.63%	
2023	-13.92%	1.30%	-14.70%	0.87%	0.78%	0.43%	
2024 1 1 - 2024 6 30	-18.99%	1.48%	-7.08%	0.92%	-11.91%	0.56%	
2024 7 1 - 2024 9 30	15.27%	2.38%	11.85%	1.80%	3.42%	0.58%	

长信消费精选量化股票A累计净值增长率与同期业绩比较基准收益率的历史走势对比图



1	2021	8	12						
		A		C					
2		A	2018	3	7	2024	9	30	
	C	2021	8	12		2024	9	30	
3					6				

/

1

2

1

2

3

4

1

2

3

4

5

5

1

2

3

6

7

8

9

10

11

1

0.0001

5

2

4 (4)

1

2

1

2

3

4

3

1

2

3

4

4

1

2

0.25%

0.5%

3

1

2

3

50%

4

1

10

2

1

2

3

4

5

6

7

8

9

10

1

1.2%

H

H

E

2

2

2

2

0.2%

H

H

E

2

2

2

3

A

C

0.40%

H

H

C

E

C

2

2

2

4 10

1

2

3

4

1

2

3

4

5

15

1
2
3
4
5
6

1

1

2

3

2

3

4

5

6

15

2

20%

7

1

2

3

4

5

6

7

8

9

10

12

11

12

12

13

14

15

16

17

18

19

20

21

22

23

24

25

26

27

28

8

9

30

10

11

10

12

13

14

15

16

17

10

1

2

3

4

1

2

3

1

1

2

3

50%

2

+ S+

M

M

3

20

4

5

6

7

1

2

1

2

3

4

5

6

3

8

1

2

3

4

5

6

1

1

2

3

4

5

6

7

8

2

3

1

3

2

3

4

1

10%

20%

20%

2

2 ()

2

3 2

20

4

5

IT

1

2

3

4

5

1

2

1

2

6

3

4

1

30

2

3

4

1

2

3

4

5

6

7

5

6

5

15

1

1

2

3

4

5

6

7

8

9

2

1

2

3

4

5

6

7

8

9

1

1

2

3

4

5

6

7

8

9

10

11

12

13

14

/

15

16

2

1

2

3

4

5

6

7

8

9

10

11

12

13

14

15

16

15

17

18

19

20

21

22

23

24

30

25

26

27

1

1

2

3

4

5

6

7

2

1

2

3

4

5

6

18

19

20

21

22

1

1

2

3

4

5

6

7

8

9

10

11

10%

10%

12

13

2

1

2

3

4

5

6

7

1

2

3

10

60

60

4

10%

10%

		10			
60				10%	10%
		10			
60					
5		10%	10%		
	10%	10%			30
6					
1				30	
1					
2					
3					
4					
5					
6					
7					
2					

3

1

1

2

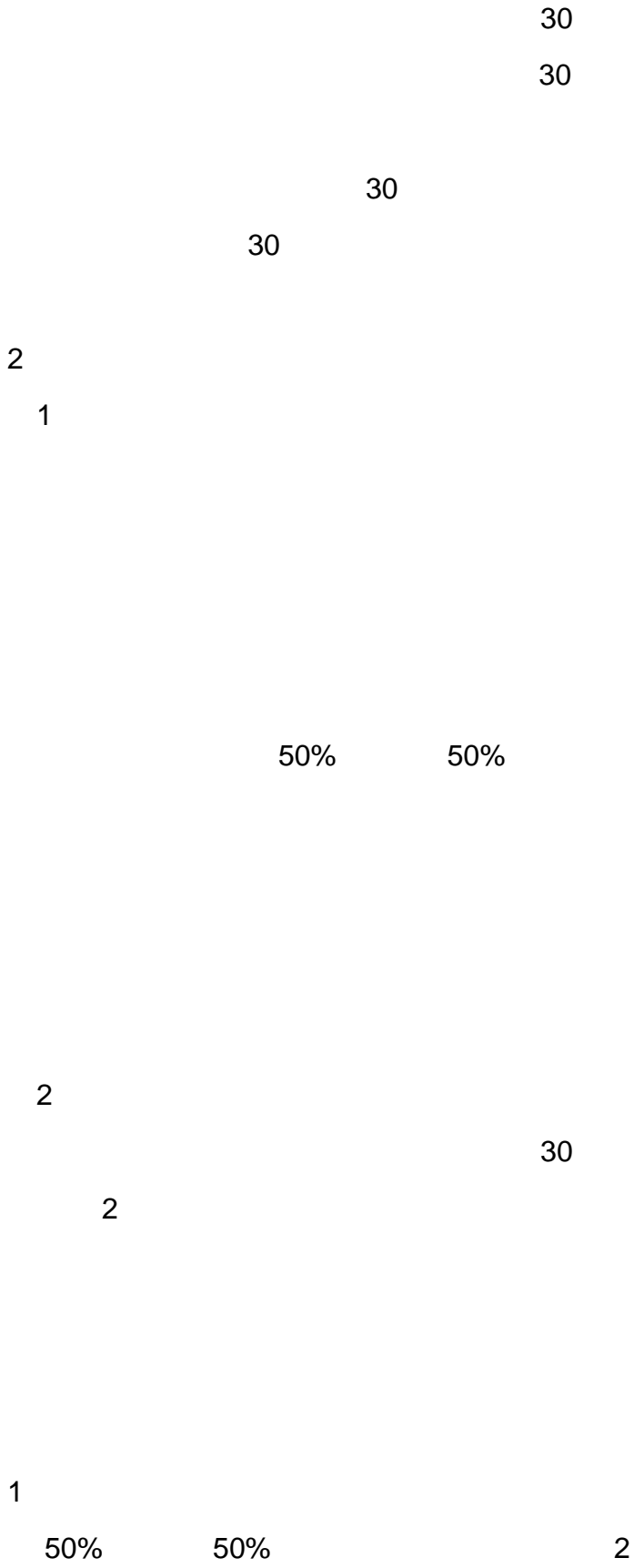
50% 50%

2

1

2

2



2

1

1

2

3

4

2

5

1

10%

10%

2

3

4

3

6

5 50%

50%

6

7

1

2

3

4

5

15

1

2

3

4

5

6

7

8

9

10

1

1.2%

H

H

E

2

2

2

2

0.2%

H

H

E

2

2

2

3

A

C

0.40%

H

H

C

E

C

2

2

2

4 10

1

2

3

4

()

80%95%

80%

3%

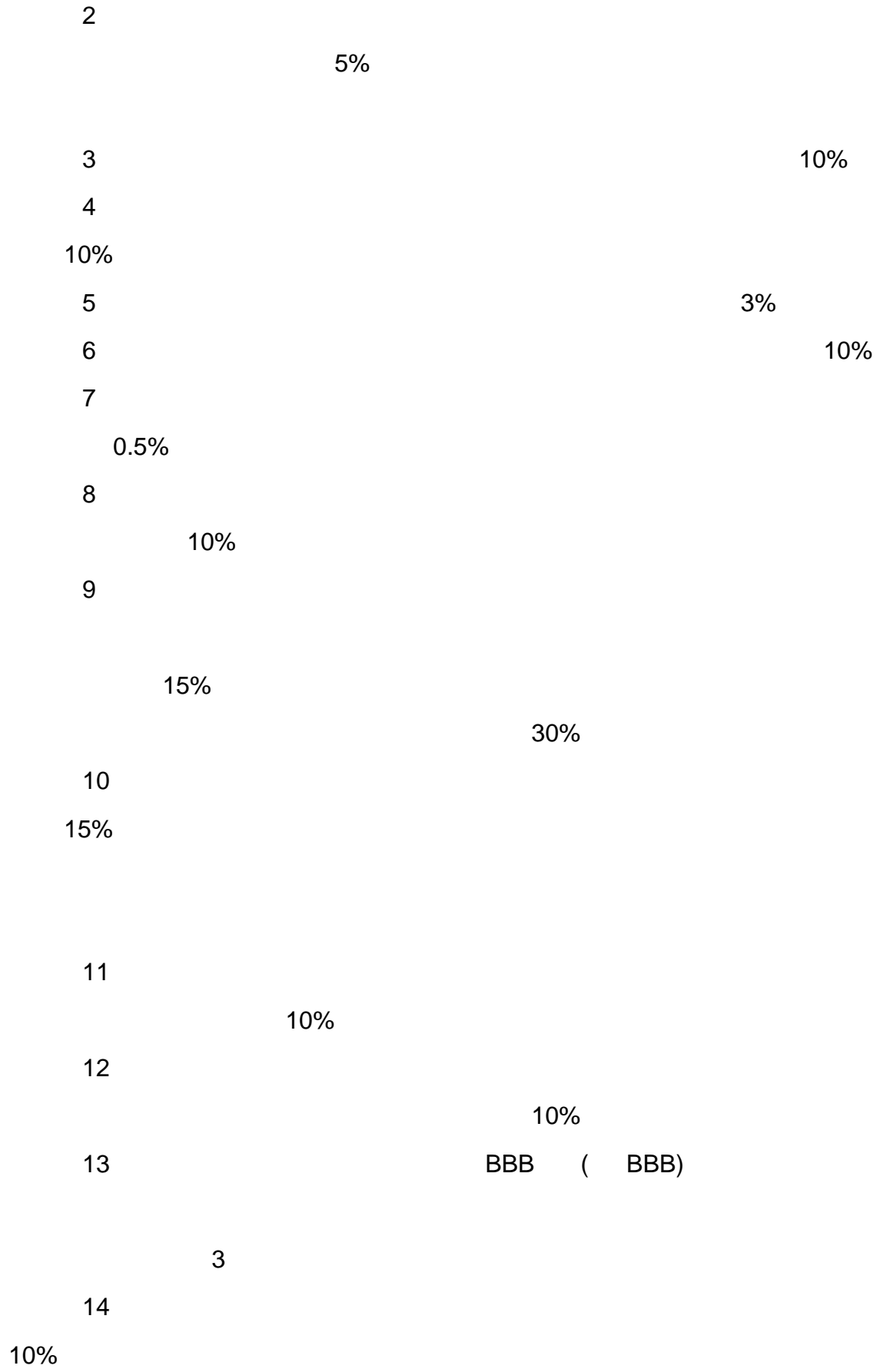
5%

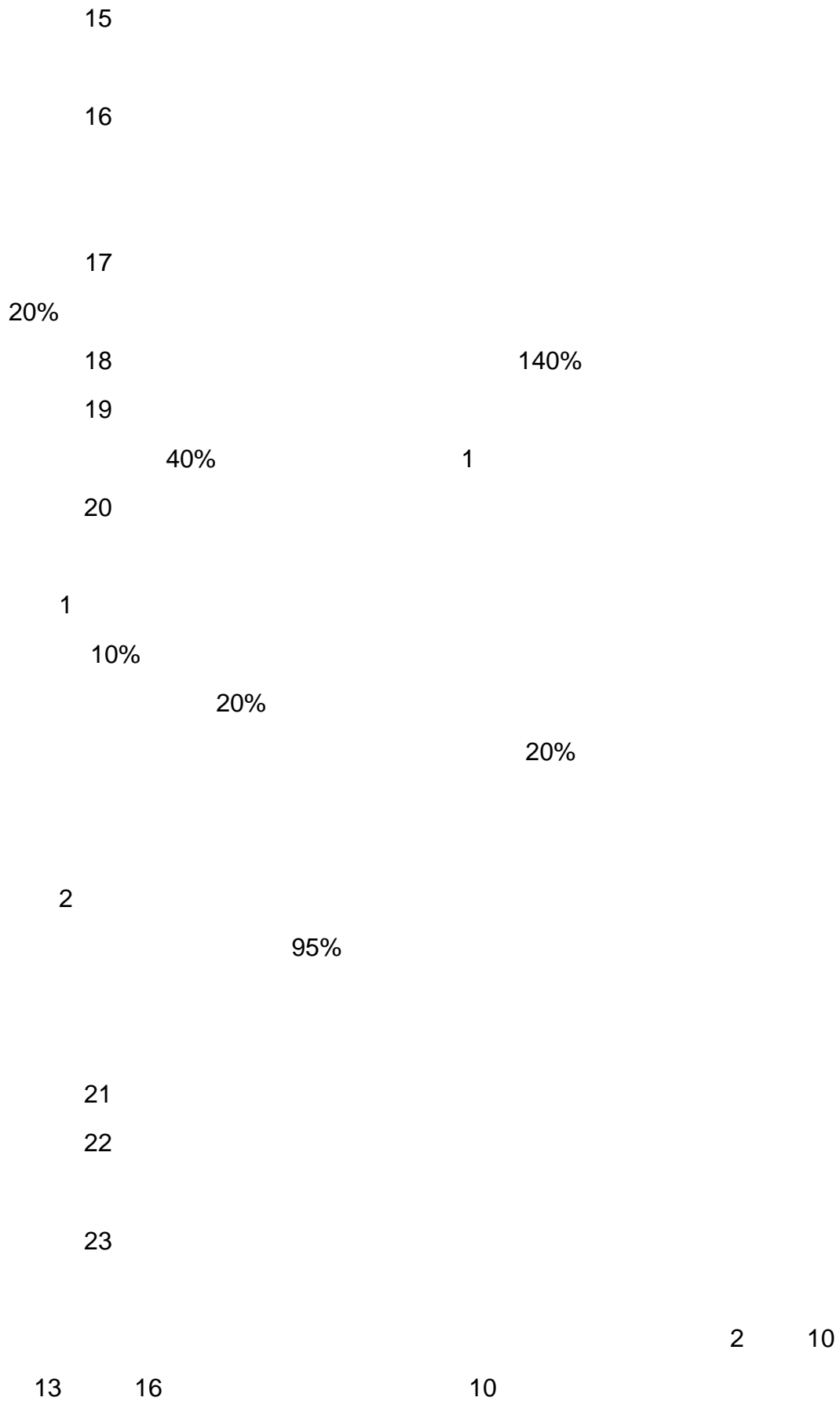
1

1

80%95%

80%





6

2

1

2

3

4

5

6

/

1

2

1

2

3

3

1

2

3

4

5

4

1

2

3

5

6

7

8

9

10

1

0.0001

5

2

4 (4)

1

2

1

2

3

4

3

1

2

3

4

4

1

2

0.25%

0.5%

3

1

2

3

50%

4

1

9

2

()

1

2

1

2

6

3

4

1

5

6

5

15

68 37

2003 5 9

[2003]63

1.65

021-61009999

021-61009800

55 100032

010 66105799

010 66105798

1984 1 1

35,640,625,71

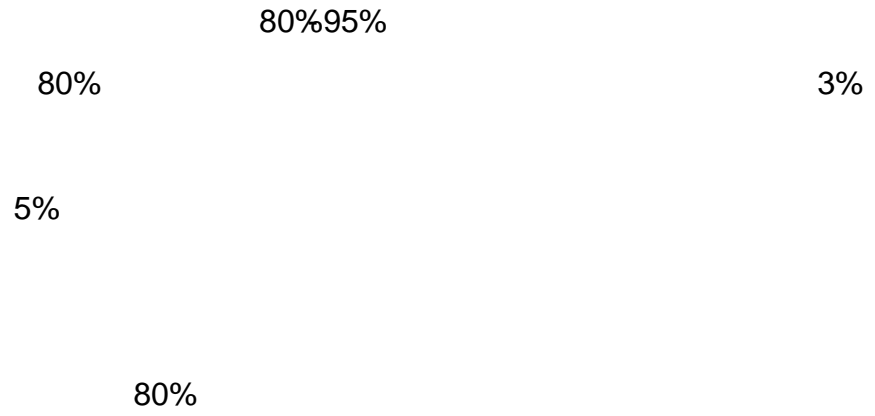
[1983]146

1

()

2

1



2

a

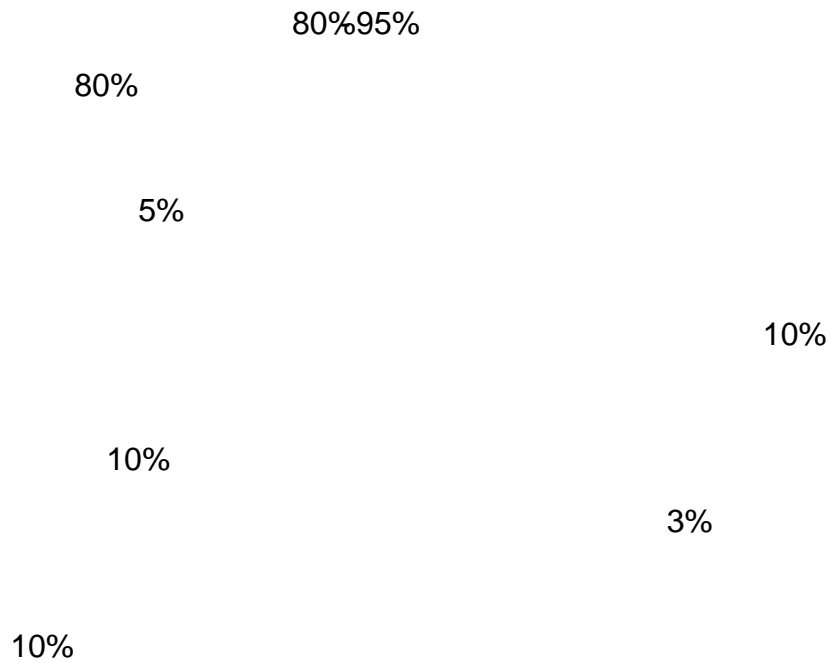
b

c

d

e

f



g				
	0.5%			
h				
		10%		
i				
			15%	
	30%			
j				
15%				
k				
		10%		
l				
				10%
m			BBB (BBB)	
		3		
n				10%
o				
p			140%	
q				
	40%		1	
r				

i.

10%

20%

20%

ii.

95%

s

5%

3%

t

u

20%

v

3

2

b j

m t

10

6

2

3

1

2

3

4

4

1

2

2

2

3

5

6

1

2

,

3

4

5

1

2

3

4

5

2

2

/

/

1

2

/

5

15

1

4

5

1

2

1

2

1

2

3

3

1

2

3

4

5

4

1

2

3

5

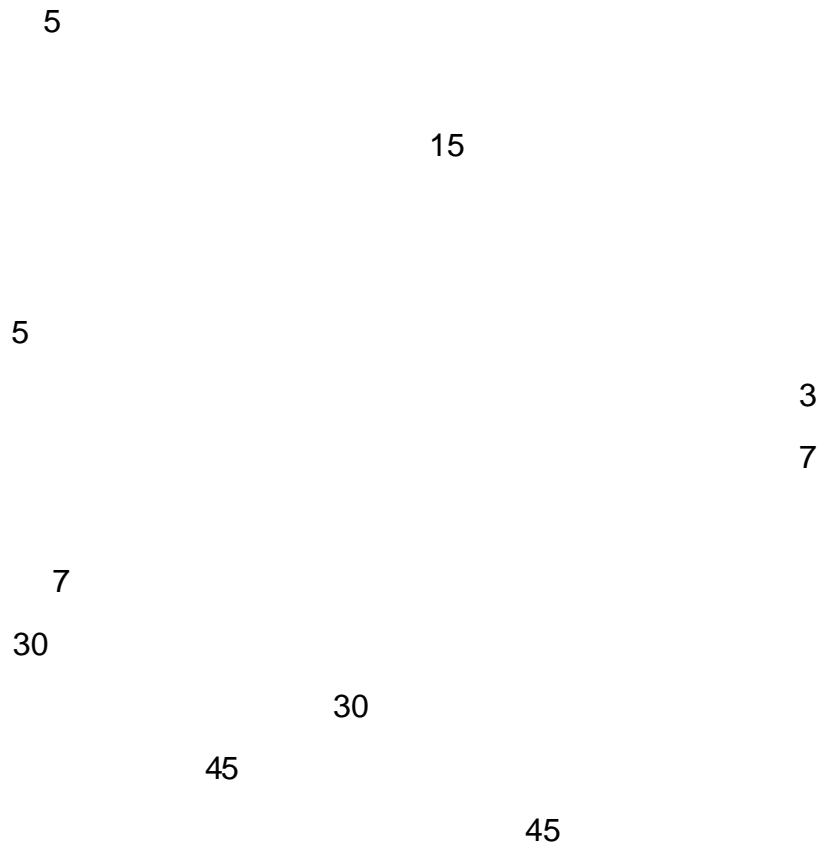
6

7

8

9

10



6 30 12 31

20

6 30 12 31

12 31

15

1

2

1

2 Å *H ^20 iQD"*6 Å *H ^1Ñ ê@ “ Ã Í# >Û ÔK0 Ã.d x FB£`,Pâ H ^1Ñ \$ 0 îÑx

Ä3

4

5

6

7

6

7

(1)

(2)

(3)

(4)

(1) (3)

5

15

			T 2
		5	
			/
			T+2
		1	
		2	
			www.cxfund.com.cn

			400-700-5566 www.cxfund.com.cn (service@cxfund.com.cn)
		5566	400-700- www.cxfund.com.cn

		4007005566	8 30-12:00 13
		00-17:00	
		021-61009865	
		https://www.cxfund.com.cn/	
		service@cxfund.com.cn	

1	2023 1		2023/12/29
2			2024/1/19
3	2023 4		2024/1/22
4	2023		2024/1/22
5			2024/2/6
6			2024/3/6
7	2023		2024/3/29
8	2023		2024/3/29
9			2024/4/1
10	2024 1		2024/4/22
11	2024		2024/4/22

12			2024/6/15
13			2024/6/15
14			2024/6/20
15			2024/6/24
16			2024/6/25
17			2024/6/26
18			2024/6/28
19	2024 2		2024/7/19
20	2024		2024/7/19
21			2024/7/20
22			2024/8/15
23			2024/8/29

24	2024		2024/8/30
25	2024		2024/8/30
26			2024/9/11
27			2024/9/25
28			2024/10/11
29	2024 3		2024/10/25
30	2024		2024/10/25
31			2024/10/28
32			2024/10/29
33			2024/11/6
34			2024/11/7
35			2024/11/19

36			2024/11/19
2024 11 30			

