



8 28 " " 2006  
[2006]180  
2006 11 9

2015 8 7



.....	5
.....	6
.....	9
.....	20
.....	28
.....	47
.....	48
.....	49
.....	65
.....	70
.....	85
.....	87
.....	89
.....	96
.....	98
.....	101
.....	102
.....	109
.....	113
.....	118
.....	121
.....	137
.....	153
.....	156
.....	160
.....	161

“

”

“

”

“

”







				68	37
		68	9	37	38

			2009 -2021
			(HK1278)
			( 2021 7 -2024 7 )
			2002


2

			( ) ( ) MBA

			( )

3

			2001
			2005

4


			2016
		2021 1 18	2020 8 2022 2023 3
		2022 5 2021 1 3	
		2015 3 14 2021 1 18	
		2010 8 26 2015 3 14	
		2008 6 2 2011 4 23	
		2006 7 6 2008 6 12	
		2006 4 30 2006 9 22	

5

	6



	250 2025 9 29

1

2

3

4

5

6

7

8

9

10

15

11

12

1

2

1

2

3

4

5

6

7

3

4

1

2

3

4

5

6

7

8

9

10

11

12

13

14

5

1

2

3

4

1

1

2

3

4

2

1

2

3

4

5

6

7

8

9

10

11

3

1

2

3

4

5

4

5

1

2

3

4

5

6

7

8

6

1

2

3

4

5

6

7

7

1

2

( )

1.

" "

2

2

1996 2 7

2004 101

43, 782, 418, 502

010-58560666

1996

2000 12 19

A

600016

2005 10 26

2009 11 26

H

01988

"

"

2

3

2004 7 9

	104	38	100%		67%
				"	"
		2018	2	6	" "
				2021	
"	2020				"
				"	"
				"	2022
"	2023			"	"
"	2023			"	" 2024
"				"	"
"	2024			"	
	2025	6	30		
		335			13,216.71
( )					
1.					
(1)					

(2)

(3)

(5)

(6)

(7)

(8)

4.

(1)

(2)

(3)

(4)

(5)

(6)

5.

(1)

(2)

(3)

(4)

(5)

(6)

( )



1	1			
	68 37			
	68 9 37 38			
	021-61009916		021-61009917	
	400-700-5566		www.cxfund.com.cn	
	2			
1				
	69			
	28			
	010-66060069		010-68121816	
	95599		www.abchina.com	
	1			

	7088	
	0755-83198888	0755-83195109
	95555	www.cmbchina.com
6		
	12	
	12	
	021-61618888	021-63604199
	95528	www.spdb.com.cn
7		
	398	
	167	
	0591-87839338	0591-87841932
	95561	www.cib.com.cn
8		
	2	
	2	
	010-58560666	010-58560666
	95568	www.cmbc.com.cn
9		
	8	C
	8	C
	010-65588888	
	95558	bank.ecitic.com
10		
	153	
	153	
	023-63799379	023-63792412
	956023	www.cqcbank.com
11		
	22	
	22	

	010-85238667	010-85238680	
	010-95577	www.hxb.com.cn	
12	933		
	933		
	027-82656924	027-82656099	
	96558	www.hkbchina.com	
	40060-96558		
	13	46	
46			
0571-85108195		0571-85106576	
95398 400-8888-508		www.hzbank.com.cn	
14		5047	
		5023 B 26	
	0755-22166118	0755-25841098	
	95511-3	bank.pingan.com	
	15	101	
		101	
0592-5365735		0592-5061952	
400-858-8888		www.xmbankonline.com	
16		25 25	
		25 25	
	010-63639110	www.cebbank.com	
	95595		
	17	26	
		26	
025-58587036		025-58587820	

	95319	www.jsbchina.cn
18		345
		345
	021-23262712	021-63586853
	95574	www.nbc.com.cn
19		119
		119
	0755-82558305	0755-28558355
	95517	www.sdic.com.cn
20		6008 14 16 17
		6008 14 16 17
	0755-83516289	0755-83515567
	400-6666-888	www.cgws.com
21		88
		88
	027-65799999	027-85481900
	95579 4008-888-999	www.95579.com
22		24
		129 39
	0411-39673202	0411-39673219
	4008-169-169	www.daton.com.cn
23		510 9
		198 A 21-22
	15907137602	021-68767692
	400-8888-128	http://www.tebon.com.cn

24		
	115 20	
	115 18	
	0755-23838750	0755-25831754
	95358	www.firstcapital.com.cn
25		
	119	
	119	
	318 2 3-6 , 12 , 13 , 22 , 25-27 , 29 , 32 , 36 , 38	
	021-63325888-2103	021-6332 6130
021-63325888	www.dfzq.com.cn	
26		
	5	
	5	
	0512-62938521	0512-65588021
	400 860 1555	www.dwjq.com.cn
27		
	1508	
	1508	
	021-22169999	021-22169134
	95525	www.ebscn.com
28		
	5 19 20	
	5 19 20	
	020-88836999	020-88836654
	95548	www.gzs.com.cn
29		
	27 1# 3 4 5	
	157 7 10	
	0591-87383623	0591-87383610
	95547	www.hfzq.com.cn

30		
	2 618	
	26	
	020-8755888 95575	020-87557985 www.gf.com.cn

	1012		16-26	
	125		19	
	0755-81981259		0755-82133952	
	95536		www.guosen.com.cn	
37				
	198			
	959		B1	
	0551-5161666		0551-5161600	
	96518 400-80-96518		www.hazq.com	
38				
	100		57	
	100		57	
	021-68777222		021-68777822	
	400-820-9898		www.cnhbstock.com	
39				
	638		21	
	638		19	
	0931-4890208		0931-4890628	
	95368 4006898888		www.hlzq.com	
40				
	90			
	90			
	025-83290979		025-84579763	
	95597		www.htsc.com.cn	
41				
	56			
	56			
	0451-82336863		0451-82287211	
	400-666-2288		www.jhzq.com.cn	
42				

	41	1619	A
	41	1619	A
	15811217115		
	95335	www. avi csec. com	
43			
		5033	61 -64
			8 518048
	0755-22626391		0755-82400862
	95511—8		www. stock. pi ngan. com
44			
		86	
			86
	021-20315197 95538		021-20315125

48		
	2	
	99 A 48	
	18064091773	027-87618863
	95391 400-800-5000	www.tfzq.com
49		
	19 B 701	
	28 C 5	
	010-66045182	010-66045518
	010-66045678	www.txsec.com
50		
	198 A 11	
	198 A 11	
	021-50295432	021-68865680
	95351	www.xcsc.com
51		
	1 4	
	1 11	
	010-83991719	010-66412537
	95385	www.grzq.com
52		
	268	
	36	
	021-38565547	
	95562	www.xyzq.com.cn
53		
	111	
	38-45	
	0755-82943666	0755-82943121
	95565 0755-95565	www.cmschina.com
54		
	5 A 6-9	

	5	A	6-9
	010-59355543		010-66553791
	40088-95618		www. e5618. com
	8	1	7 18 101
	8	1	
55			
	010-80928123		

	1777		21 22	
	0755-82943755		0755-82960582	
	95329		www.zszq.com.cn	
61				
	9 1			
	9 1			
	010-63081000		010-63080978	
	95321		www.cindasc.com	
62				
	8			
	8			
	023-63786633		023-67616310	
	95355 4008096096		www.swsc.com.cn	
63			969 3 5 599	
			B 6	
	0571-81137494		4000-766-123	
	4000-766-123		www.fund123.cn	
64			526 2 220	
			1111 1 A 6	
	021-20691832		021-20691861	
	400-820-2899		www.ericfund.com	
65			360 9 3724	
			1687 2	
	021-38602377		021-38509777	
	400-821-5399		www.noah-fund.com	
66			685 37 4 449	
			1118 903-906	

	021-20613988	021-68596916
	4007009665	www.ehowbuy.com
67	22 1002	
	22 10	
	010-85657353	010-65884788
	400-920-0022	www.l i cai ke. hexun. com
68	190 2 2	
	88	
	021-54509998	021-64385308
	400-1818-188	fund. eastmoney. com
69	88 9 15 1809	
	88 SOHO C 1809	
	010-52855713	010-85894285
	400-6099-200	www. yi xi n fund. com
70	1 903	
	18 4	
	952555	0571-86800423
	952555	www. 5i fund. com
71	333 201 A 056	
	700 2 C5	
	021-34013996-3011	
	021-34013999	www. hotj i j i n. com
72	1333 14 09	
	1088 7	
	021-20665952	021-22066653
	4008219031	www. l u funds. com

	900 15 526

72

	15	201 501 502 1103 1601-
	1615 1701-1716	
	15	201 501 502 1103 1601-
	1615 1701-1716	
	0571-87789160	0571-87818329
95336, 40086-96336	www.ctsec.com	
80	1 A 201	
	A 36 37	
	0755-89462447	0755-86700688
	400-999-8877	www.webank.com
81	687 1 2 268	
	33 B 8	
	010-88066632	010-88066552
	4008175666	www.amcfortune.com
82	55 20 2302	
	6	
	010-85256214	
	4008195569	www.hx-sales.com
83	3046 2111	
	2 A 2208	
	010-88312877-8032	010-88312099
	400-001-1566	www.yilucaifu.com
84	8 53 5312-15	
	21 C 11	
	021-38789658	021-68880023
	400-600-8800	www.jsfund.cn

85					
		34	6	15	1501
		34			C 17

91					
			16		
			16		
		010-63631752		010-6622276	
		95519		www.e-china-life.com	
92					
			9	1101	
			399	1 1	B 12
		13910181936			
		400-080-3388		www.puyifund.com	
93					
			4 2 1	A2112	
			18		
		010-85556048		010-85556088	
		95390		www.crsec.com.cn	

10

94

97				
	33 11 B			
	1500			
	021-50712782			
	400-799-1888		www.520fund.com.cn	
98				
	1			
	1		22	
	0769-22115712		0769-22115712	
	95328		www.dgzq.com.cn	
99				
	16		1 3 307	
	16		1 3 307	
	010-65309516		010-65330699	
	400-673-7010		www.jianfortune.com	
100				
	1-5			
	1-5			
	18551604006			
	95177		www.snjijin.com	
101				
	2		6 712	
	2		6 712	
	010-66154828		010-63583991	
	010-66154828		www.5irich.com	
102				
			497 1008-1	
	18 8		6	
	18865518956		02135073616	
	400-700-9700		www.zocai fu.com	
103				
	92 -4 24 10 1012			

	118	1206
	18201874972	
	4000048821	www. tai xi ncf. com
104	389	
	389	
	025-58519529	
	95386	www. nj zq. com. cn
105		198
		198
	010-58124967	
	95584	www. hx168. com. cn
106	( )	428 1 1102
		428 1 1102
	021-20219988	
	021-20292031	https: //www. wg. com. cn/
1	3	
		http: //www. sse. com. cn

	17	256 1405	222 30
	17	256 1405	222 30
	010-59378856	021-51150298	021-61418888

	010-59378907	021-51150398	021-61411909

				2006	8	28	
2006	180						
		2006	9	18	2006	11	3
						1.00	
	580,617,102.63					6,507	

2006 11 9

5,000

200

20

1

2

“

”

3

4

5

[www.cxfund.com.cn](http://www.cxfund.com.cn)

1

2

3

519993

519992

2006 11 27

9 00-11 30 13 00-15 00

2007 9 1

3

2007 2 8

9

00-11 30 13 00-15 00

1 " "

2 " "

3 " "

4

5

1

2

T

T+1

T 2

3

T 7

1 2014 5 15

1

1

100

100

2 2014 5 15

1

1

1

1

3

4

5

2

2

6

4

5

7

/

8

1

1

2

- 1
- 2
- 3
- 4
- 5
- 6
- 7
- 8
- 9
- 10

M		
M 100	1.50%	0.075%
100 M 500	1.00%	0.05%
M 500	1000	1000

2008 6 2

2008 5 20

3

N	
N 1	1.8%
1 N 3	1.2%
3 N 5	0.6%
N 5	0

2

N /	
N 7	1.5%
7 N 1	0.5%
1 N 2	0.3%
N 2	0

3

4 2007 9 1

5

25%

7

1

1

/ 1

/

1

1

2.0000

1.5%

10,000	1.5%	9,852.22	147.78	2.0000	4,926.11

4,926.11

4,926

0.22

2

= /T

2

1

1.1000

10,000	1.1000	9,090.91

9090.91 = 10000 / 1.1

9090

1.00

3

2

2

2

1

= × T

= ×

=

2

= × T

= ×

×

= ×

=

-

3

7

1

0.5%

1.1000



4

5

50%

50%

6

50%

7

1 3 6 7

1

2

3

4

50%

5

3

20

1

10%

2

1

2

10%

3

20%

20%

" 1 "

" 2 "

4

2

20

519993

A B

A

519999 B

519998

---

(					A		A
	519997					A	A
	004925				A		A
	519995				A	A	519985
			C	C			519989
		A	A		519991		
		A	A				519983
A	A						519979
A	A						519975
						A	A
	519967						
519965					A	A	519959
							A
	A						519947
							A

1

2

1

$$\left( \begin{array}{c} \times \\ \times \\ - \end{array} \right) \times \div (1+ \quad )$$

÷

2

$$\begin{array}{c} \times \\ \times \end{array} \times \div (1 \quad )$$

÷

$$\left( \quad 1.00 \quad \right)$$

3

$$\begin{array}{c} \times \\ \times \end{array}$$

÷

$$\left( \quad 1.00 \quad \right)$$

2 2007 9 1

“ ”

“ ”

“ ”

”

”

( )

A

1

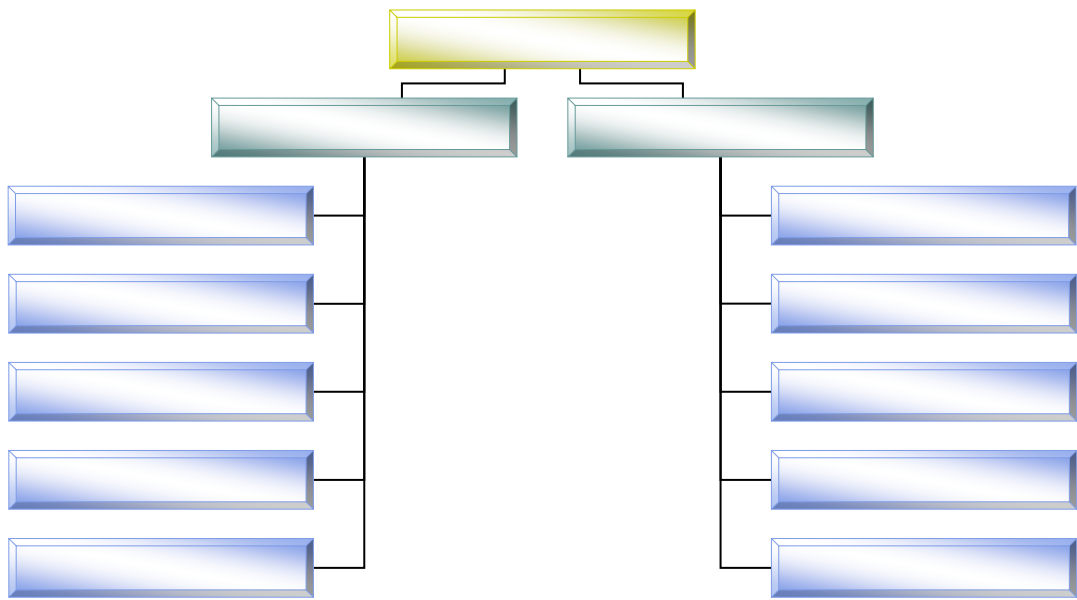
A

3

80%

20%





2

(I)

(II)

3

A

1

2

3

4

300

300

× 70%

× 30%

2015 8 7

"

" "

"

1

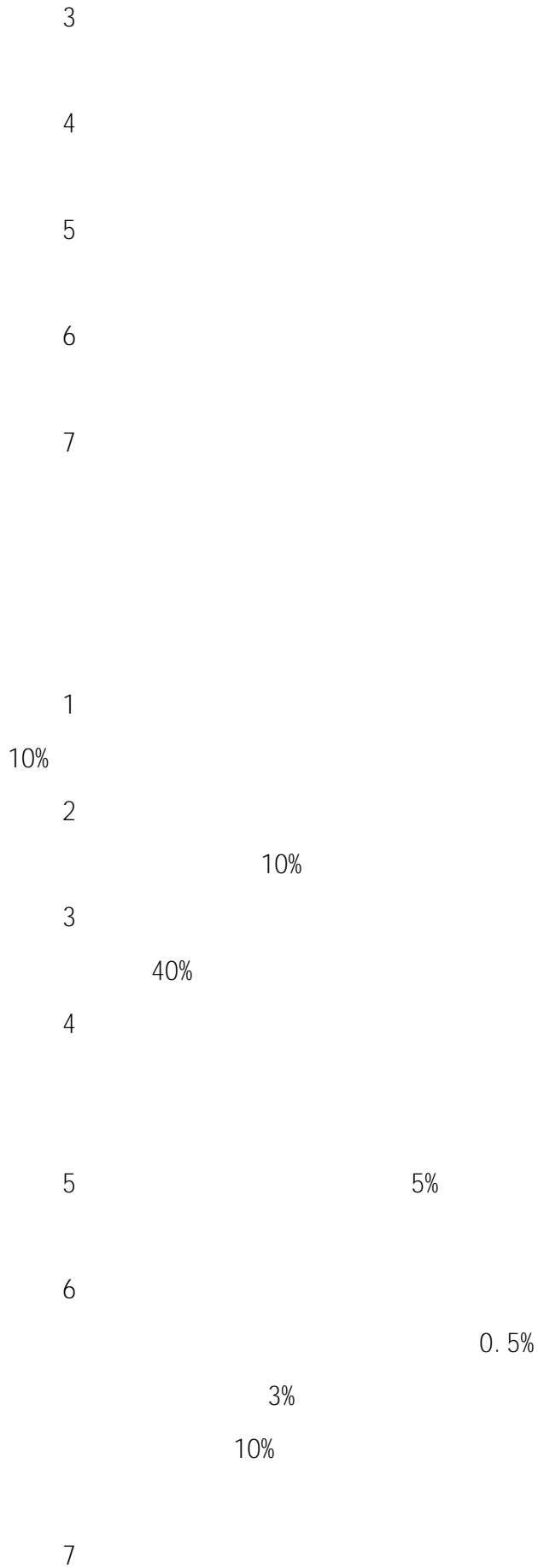
2

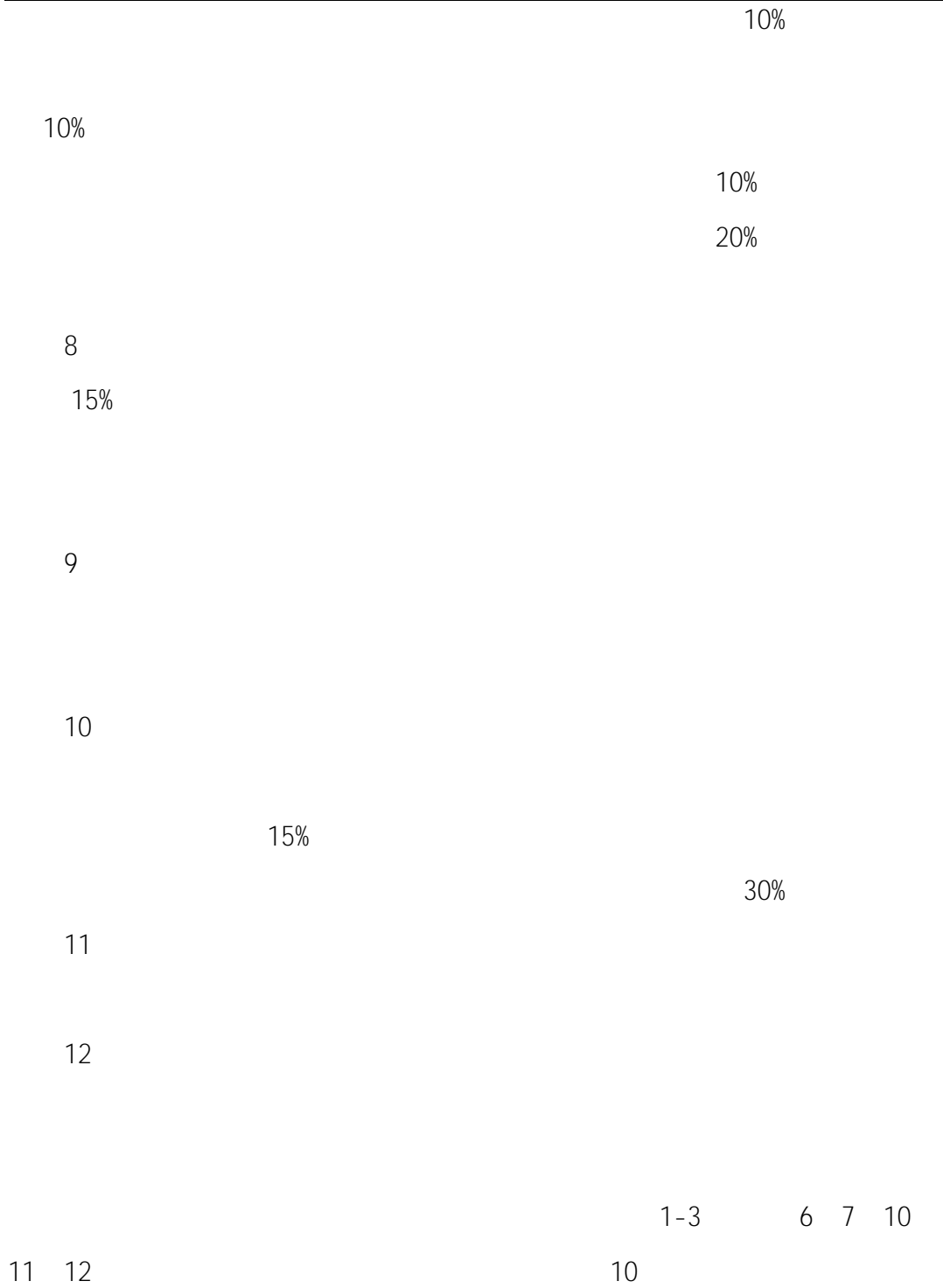
3

4

1

2





1

2

3

4

5

6

7

8

1

2

3

4

“ ”

2025 9

2025 6 30

			%
1		249,913,791.79	89.09
		249,913,791.79	89.09
2		-	-
3		14,076,609.97	5.02
		14,076,609.97	5.02
		-	-
4		-	-
5		-	-
6		-	-
		-	-
7		14,658,395.98	5.23
8		1,877,505.28	0.67
9		280,526,303.02	100.00

1

			%
A		-	-

B		10,022,827.00	3.69
C		178,039,651.79	65.63
D		-	-
E		-	-
F		12,864,452.00	4.74
G		-	-
H		-	-
I		8,155,266.00	3.01
J		20,149,439.00	7.43
K		5,116,320.00	1.89
L		15,565,836.00	5.74
M		-	-
N		-	-
O		-	-
P		-	-
Q		-	-
R		-	-
S		-	-
		249,913,791.79	92.13

2

					%
1	300476		137,500	18,477,250.00	6.81
2	600415		752,700	15,565,836.00	5.74
3	688636		358,441	12,111,721.39	4.46
4	300502		91,000	11,558,820.00	4.26
5	600760		192,100	11,260,902.00	4.15
6	601336		187,900	10,992,150.00	4.05
7	688519		244,093	10,935,366.40	4.03
8	603306		250,100	10,879,350.00	4.01
9	600547		313,900	10,022,827.00	3.69

10	688002		120,744	8,418,271.68	3.10
11	603699		258,600	8,060,562.00	2.97
12	300627		226,400	7,924,000.00	2.92
13	000988		167,800	7,888,278.00	2.91
14	603883		367,200	7,714,872.00	2.84
15	600391		196,400	5,734,880.00	2.11
16	301165		91,420	5,618,673.20	2.07
17	688183		108,726	5,566,771.20	2.05
18	688297		103,185	5,510,079.00	2.03
19	002345		372,700	5,452,601.00	2.01
20	688521		56,456	5,448,004.00	2.01
21	688313		142,279	5,413,715.95	2.00
22	002570		840,200	5,360,476.00	1.98

4	000951		23,533,077.80	8.64
5	603883		23,247,078.00	8.54
6	603596		22,594,531.00	8.30
7	689009		21,916,885.51	8.05
8	688002		21,388,548.69	7.85
9	688200		21,241,825.90	7.80
10	600547		20,563,044.00	7.55
11	688519		20,159,058.89	7.40
12	300627		18,774,170.80	6.89
13	688256		18,575,966.28	6.82
14	002044		18,287,784.28	6.72
15	300765		18,271,079.00	6.71
16	300476		17,908,232.00	6.58
17	300972		17,478,212.00	6.42
18	688111		16,809,691.29	6.17
19	688636		16,705,372.40	6.14
20	300033		16,411,295.00	6.03
21	000568		16,194,428.00	5.95
22	600079		16,056,328.00	5.90
23	600562		15,979,560.00	5.87
24	002594		15,902,120.00	5.84
25	688278		15,871,158.73	5.83
26	601155		14,827,582.00	5.45
27	603728		14,271,437.00	5.24
28	002311		14,055,013.20	5.16
29	603699		13,780,708.95	5.06
30	600066		13,192,193.00	4.84
31	688297		13,092,875.59	4.81
32	600095		12,962,096.82	4.76
33	000963		12,671,433.00	4.65
34	688301		12,621,519.29	4.64
35	002517		12,543,434.00	4.61
36	301073		12,196,841.30	4.48
37	601601		11,719,452.00	4.30
38	600316		11,530,235.00	4.23
39	601689		11,404,935.00	4.19
40	688981		11,055,313.67	4.06
41	300433		10,952,346.00	4.02
42	002939		10,810,991.00	3.97
43	002570		10,808,444.00	3.97
44	300896		10,799,422.20	3.97
45	601988		10,763,944.00	3.95
46	600150		10,751,767.00	3.95
47	300750		10,738,590.00	3.94
48	300408		10,730,794.00	3.94
49	002345		10,676,485.00	3.92

50	688019		10,624,865.10	3.90
51	002668	TCL	10,622,082.00	3.90
52	601059		10,619,703.00	3.90
53	688631		10,614,557.09	3.90
54	688114		10,578,751.29	3.89
55	300777		10,519,467.00	3.86
56	603337		10,462,584.00	3.84
57	600760		10,452,444.80	3.84
58	002170		10,419,153.00	3.83
59	688213		10,416,494.98	3.83
60	601336		10,387,426.00	3.81
61	300394		10,343,171.80	3.80
62	300662		10,306,949.62	3.79
63	603707		10,300,070.00	3.78
64	300203		10,276,172.00	3.77
65	000988		10,273,563.00	3.77
66	601288		10,261,576.00	3.77
67	600967		10,244,427.00	3.76
68	601166		10,218,628.00	3.75
69	603697		10,204,061.80	3.75
70	300181		10,195,449.00	3.74
71	688552		10,186,660.60	3.74
72	300502		10,136,879.96	3.72
73	002294		10,103,832.00	3.71
74	000977		10,072,437.00	3.70
75	002595		10,038,920.00	3.69
76	688270		10,008,025.82	3.68
77	688522		9,936,287.79	3.65
78	600882		9,900,688.00	3.64
79	002821		9,556,681.00	3.51
80	300888		9,435,694.00	3.47
81	688656		9,358,649.10	3.44
82	300785		8,916,295.00	3.27
83	002335		8,419,051.00	3.09
84	300866		8,321,811.60	3.06
85	603198		8,293,724.00	3.05
86	000858		8,245,454.00	3.03
87	003010		8,160,441.00	3.00
88	601127		8,089,020.00	2.97
89	002371		8,083,879.00	2.97
90	600026		8,035,196.00	2.95
91	002970		8,024,516.00	2.95
92	600036		8,021,807.00	2.95
93	000933		8,013,494.00	2.94

96	301188		7,679,739.29	2.82
97	600519		7,678,336.00	2.82
98	300661		7,638,303.00	2.81
99	605499		7,567,278.00	2.78
100	603833		7,457,247.00	2.74
101	603920		7,445,591.00	2.73
102	688800		6,538,994.07	2.40
103	002130		6,284,669.00	2.31
104	603193		5,873,387.00	2.16
105	688131		5,776,696.46	2.12
106	300339		5,557,247.00	2.04
107	603868		5,543,386.00	2.04
108	000680		5,541,048.00	2.03
109	002384		5,519,895.00	2.03
110	301293		5,512,200.00	2.02
111	688017		5,510,078.24	2.02
112	000661		5,497,638.00	2.02
113	301031		5,496,824.00	2.02
114	688041		5,487,701.39	2.02
115	300633		5,480,335.00	2.01
116	301239		5,476,221.00	2.01
117	002938		5,474,100.00	2.01
118	002222		5,472,350.00	2.01
119	002179		5,461,721.00	2.01
120	603214		5,452,925.00	2.00

2

2% 20

				(%)
1	300681			

14	000858		18,256,648.00	6.70
15	002384		17,414,039.00	6.40
16	603728		17,286,501.00	6.35
17	002594		17,033,895.00	6.26
18	300888		16,885,738.40	6.20
19	301073		16,631,009.47	6.11
20	000568		16,588,879.00	6.09
21	300033		16,159,439.00	5.93
22	002595		16,091,495.00	5.91
23	600562		15,896,207.00	5.84
24	688256		15,825,712.17	5.81

60	601059		10,431,360.00	3.83
61	300433		10,346,861.51	3.80
62	002517		10,324,549.00	3.79
63	601288		10,284,926.00	3.78
64	300896		10,134,717.00	3.72
65	601155		10,052,226.00	3.69
66	603707		10,049,647.00	3.69
67	300627		10,020,543.00	3.68
68	603337		10,018,772.00	3.68
69	300181		9,868,782.00	3.62
70	300394		9,839,355.60	3.61
71	688519		9,812,032.67	3.60
72	002668	TCL	9,811,692.00	3.60
73	688631		9,755,376.58	3.58
74	688270		9,651,167.45	3.54
75	300203		9,500,466.00	3.49
76	002821		9,477,975.00	3.48
77	605319		9,408,926.00	3.46
78	688522		9,231,026.87	3.39
79	600967		9,011,867.00	3.31
80	002739		8,925,254.00	3.28
81	688656		8,763,921.81	3.22
82	002371		8,592,198.00	3.16
83	002335		8,524,087.90	3.13
84	603198		8,375,053.00	3.08
85	300785		8,287,393.75	3.04
86	605117		8,275,045.00	3.04
87	000933		8,165,855.00	3.00
88	601127		8,140,949.00	2.99
89	003000		8,069,671.00	2.96
90	601398		8,008,501.00	2.94
91	300395		7,975,686.00	2.93
92	600026		7,894,764.00	2.90
93	600036		7,857,892.00	2.89
94	000001		7,839,345.00	2.88
95	601601		7,837,345.00	2.88
96	603920		7,810,341.00	2.87
97	300866		7,786,686.80	2.86
98	601336		7,615,781.00	2.80
99	600519		7,567,541.00	2.78
100	688297		7,545,029.10	2.77
101	300661		7,521,018.00	2.76
102	002970		7,249,502.00	2.66
103	603166		7,006,057.00	2.57
104	300476		6,933,273.00	2.55
105	603833		6,795,397.00	2.50

106	603228		6,794,782.00	2.50
107	603630		6,770,578.00	2.49
108	300870		6,730,156.25	2.47
109	688636		6,590,517.31	2.42
110	603697		6,402,302.00	2.35
111	002536		6,317,616.00	2.32
112	601777		6,261,318.00	2.30
113	688800		6,192,466.01	2.27
114	002345		6,187,851.00	2.27
115	301367		6,105,423.00	2.24
116	603108		6,087,002.00	2.24
117	301187		6,046,604.00	2.22
118	688041		5,730,175.32	2.10
119	301188		5,556,452.00	2.04
120	603127		5,520,541.00	2.03
121	002956		5,515,693.60	2.03
122	001696		5,477,624.00	2.01
123	301293		5,451,407.00	2.00

" "

### 3

		1,826,334,612.96
		1,843,513,996.37

" " "

1		14,076,609.97	5.19
2		-	-
3		-	-
		-	-
4		-	-
5		-	-
6		-	-
7		-	-
8		-	-
9		-	-
10		14,076,609.97	5.19

1	019749	24	15	139,000	14,076,609.97	5.19

1

2

1

2

3

1		453,621.50
2		1,422,375.99
3		-
4		-
5		1,507.79
6		-
7		-
8		-
9		1,877,505.28

4

5

6

2025

2007	152.23%	1.92%	98.52%	1.61%	53.71%	0.31%
2008	-52.72%	2.36%	-50.46%	2.13%	-2.26%	0.23%
2009	42.98%	1.59%	62.82%	1.43%	-19.84%	0.16%
2010	-6.84%	1.26%	-7.46%	1.11%	0.62%	0.15%
2011	-28.73%	1.29%	-16.91%	0.91%	-11.82%	0.38%
2012	2.18%	1.24%	6.72%	0.90%	-4.54%	0.34%
2013	18.26%	1.42%	-4.17%	0.98%	22.43%	0.44%
2014	19.00%	1.32%	36.11%	0.85%	-17.11%	0.47%
2015	86.30%	2.89%	7.44%	1.74%	78.86%	1.15%
2016	-8.29%	1.67%	-6.63%	0.98%	-1.66%	0.69%
2017	-0.30%	0.80%	15.14%	0.45%	-15.44%	0.35%
2018	-24.01%	1.35%	-16.74%	0.94%	-7.27%	0.41%
2019	31.48%	1.11%	26.16%	0.87%	5.32%	0.24%
2020	43.62%	1.48%	20.29%	1.00%	23.33%	0.48%
2021	-0.37%	1.60%	-2.12%	0.82%	1.75%	0.78%



1  
2  
3  
4  
5  
6  
7  
8  
9

1  
2  
3

”

”

”

”

1

2

3

4

5

6

7

1

2

1

2

3

4

1

2

3

4

5

6

7

8

9

10

1

“ ” ”

”

2

1

2

3

4

5

6

7

3

1

2

3

4

4

1

4

4

0.25%

0.5%

2

50%

50%

3

4

1

2

3

1

9

2

1  
2  
3  
4  
5

6

3

7

12

80%

12

8

1

10%

0.01

10

2

---

10%

0.01

10

10

9

10%

10

"

"

1

1

2

3

4

5

6

7

8

2

1

1.2%

H E × 1.2%

H

E

2

2

0.2%

H=E × 0.2%

H

E

3 " 1 " 3 8

3

4

1

" "

2

" "

3

“ ”  
4  
“ ”

“ ”

1

2

1 1 12 31

3

3

4

5

6

7

1

2

3

2

~

1 N

e

“

”

“

”

1

2

1

1

2

3

2

3

4



1

2

3

4

5

6

7

8

9

10

12

50%

11

12

30%

12

13

14

15



11

“ ”

12

10

1

2

3

1

1

2

3

50%

2

" + S+ "

M

M

3

20

4

5

6

7

1

2

1

2

3

4

5

6

3

8



1

1

2

3

4

5

2

3

4

5

1

"

"

2

3



6

7

IT

8

9

10

11

12

1

1

;

2

3

4

5

6

7

8

9

10

1

2

3

2

1

1

2

6

3

4

2

1

1

30

2

3

2

1

2

3

4

5

6

7

3

4

1

2

3

4

1

2

3

5

6

15

1

1 1

1

2

3

4

5

6

7

8

15

16

1 2

1

2

3

4

5

6

7

8

9

10

11

12

13

14

15

16

15

17

18

19

20

21

22

23

30

24

25

26

27

2

2 1

1

2

3

4

5

6

7

8

9

2 2

1

2

3

4

5

6

7

8

9

10

11

12

13

14

15

16

17

18

19

20

21

22

23

3

3 1

1

2

3

4

5

6

7

8

9

3 2

1

2

7

1

1 1

1

2

3

4

5

8

7

8

1

2

3

10

60

4

10%

10%

3

4

5

6

3 2

4

4 1

1

2

50% 50%

4 2

1

2

2

3

50% 50%

4

3

5

5

5 1

10%

10%

1

2

10% 10%

6

30

30

5 2

1

50%

50%

2

30



4

7 2

8

5

9

1

10%

10%

2

3

4

3

6

5

50%

50%

6

7

1

1 1

1

2

3

4

5

6

7

8

9

10

1

2

3

1 2

2

1

2

6

3

4





1

1

( " " )

(

)

2

A

10%

B

10%

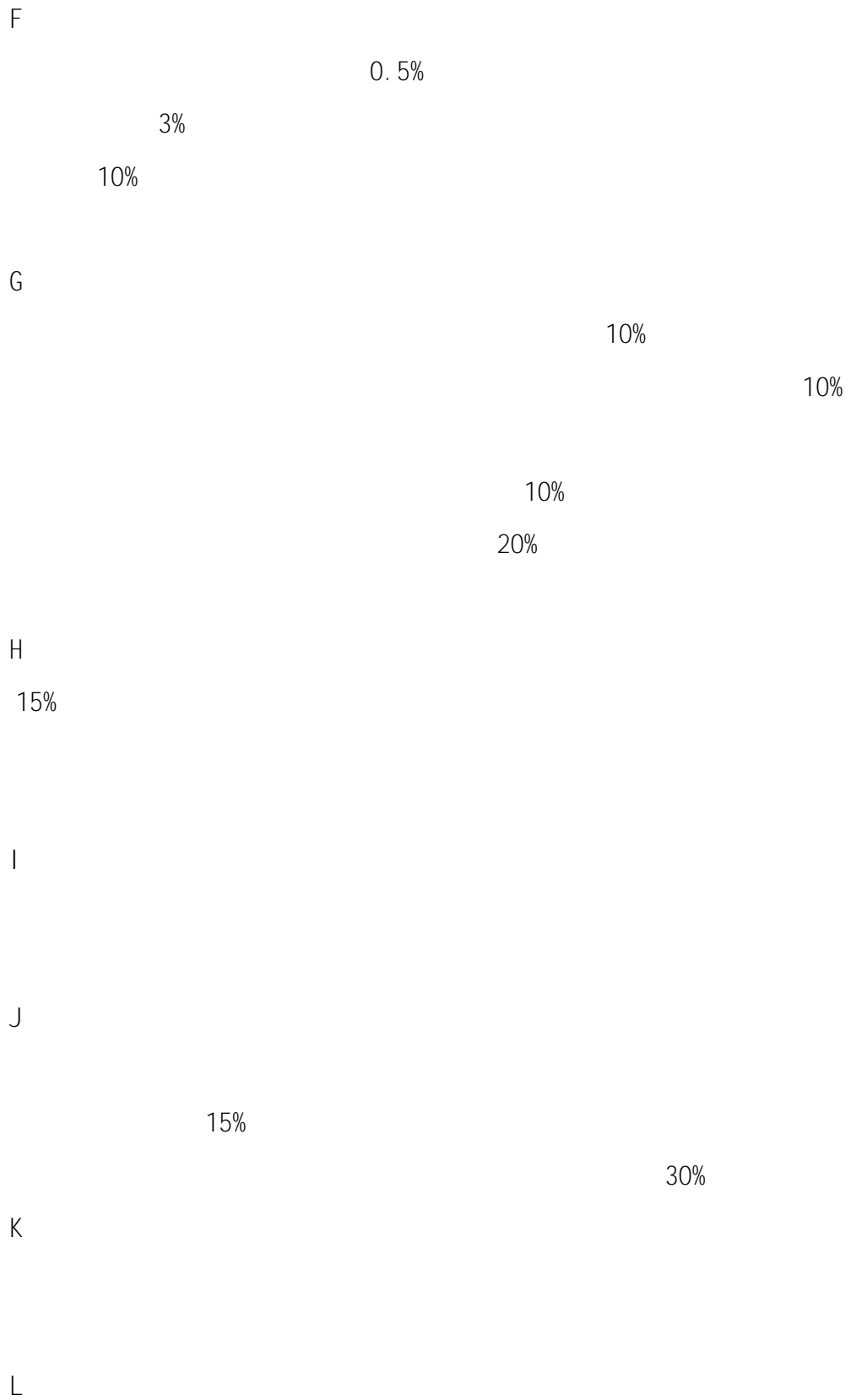
C

40%

D

E

5%



---

		(A)-(C)	(F)	(G)	J
K	L			10	

3

4

3

5

6

7

8

2

1

2

3

1

1

2

3

4

5

6

7

8

2

1

"

"

2

2

2

3

3

1

2

3

4

4

1

2

3

5

1

2

6

1

2

7

8

1

2

3

1

2

3

4

5

0.5%

1

"

"

"

"

2

A

B

C

" "

D

E

F

G

3

A

B

C

D

E

0.5%

4

5

6

1

2

A

B

C

1

5

2

2

2

15

8

5

3

30

20

4

50

30

5

6

7

15

1

2

1

2

3

4

" " " "

" "

			T 2
			5
			" " /
			T+2 "
			"

1

2

			7× 24
			400-700- www.cxfund.com.cn (service@cxfund.com.cn)
			400-700-5566 <a href="http://www.cxfund.com.cn">www.cxfund.com.cn</a>

		4007005566	8 30-12 00
		13 00-17:00	
		021-61009865	
		<a href="https://www.cxfund.com.cn/">https://www.cxfund.com.cn/</a>	
		service@cxfund.com.cn	

1			2024/9/11
2			2024/9/25
3	2024	1	2024/9/30
4			2024/10/11
5	2024	3	2024/10/25
6	2024		2024/10/25
7			2024/10/28
8			2024/10/29
9			2024/11/6
10			2024/11/7
11			2024/11/19

12			2024/11/19
13			2024/12/4
14			2024/12/20
15			2025/1/4
16			2025/1/10
17	2024 4		2025/1/22
18	2024		2025/1/22
19			2025/1/25
20			2025/3/21

21	2024		2025/3/28
22	2024		2025/3/28
23	2024		2025/3/31
24			2025/4/19
25	2025 1		2025/4/22
26	2025		2025/4/22
27			2025/4/26
28			2025/6/6
29	2025 2		2025/7/21
30	2025		2025/7/21
31	2025		2023/8/29
32	2025		2023/8/29

2025 8 31			



